

Garth Code : B287-17P18

Customer Item ID : 3180795

APN : 9333417015802

BBQ Name on Carton : BOSS 6 BURNER BUILT IN BBQ

BBQ Name on Hood : Matador

Component Breakdown

Code	Description	Box Length	Box Width	Box Height	Net Weight	Gross Weight
B287-17P18	Hood + BBQ	1050mm	690mm	610mm	43.3kg	51.33kg
B287-17P18	Hot plate+Grill	555mm	395mm	160mm	14.7kg	16.1kg

Assembled Dimensions

Overall Length	Overall Width	Overall Height	Overall Weight
1052mm	633mm	552mm	58kg

Miscellaneous Information

Cooking Area 960mm x 480mm
Total Heat Input 90+9Mj/hr
Supply Pressure 2.75kPa
Gas Type ULPG
NG Conversion Yes
BBQ cover NO
Hood Glass Window: LG116



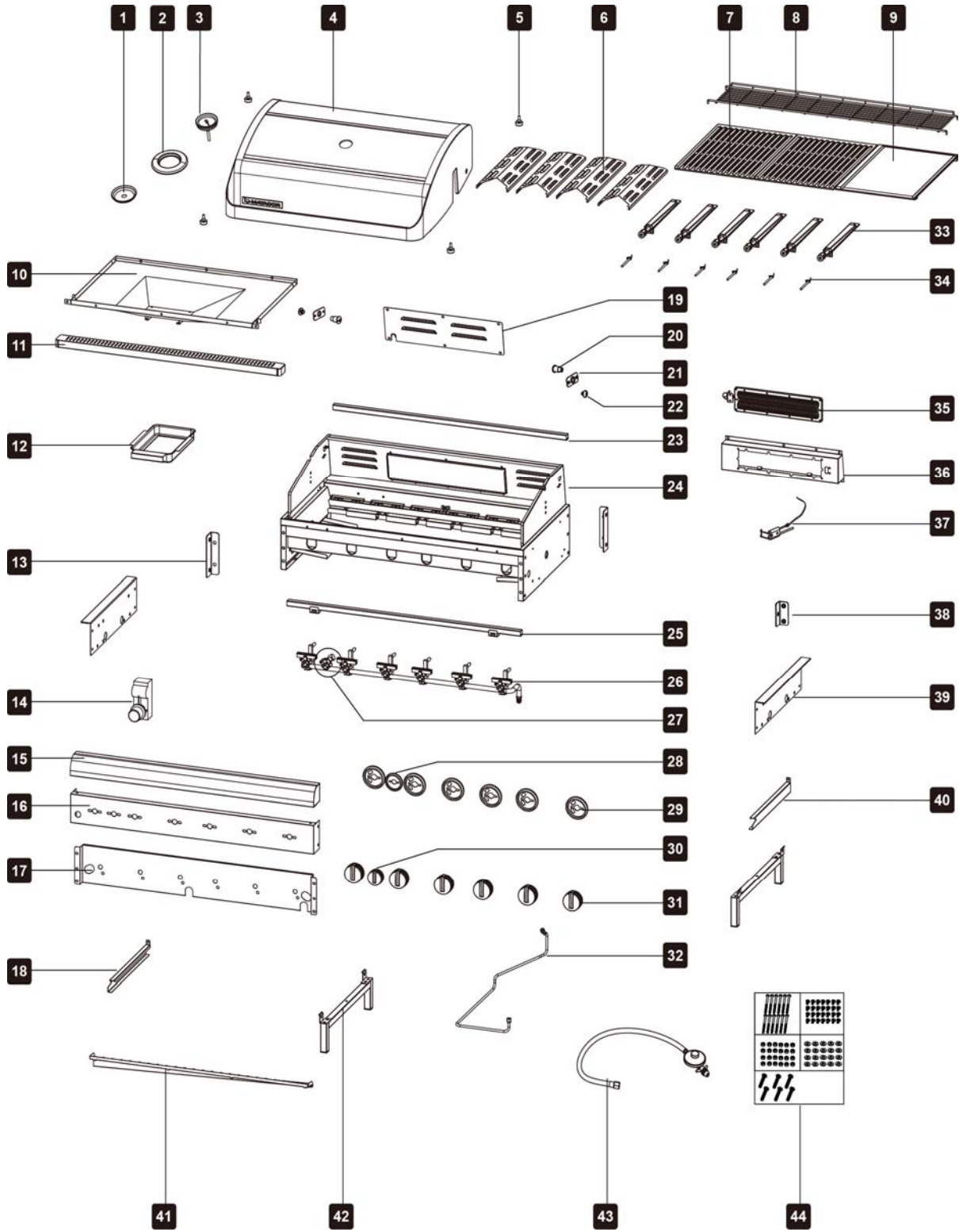
WARRANTY PERIOD: 5 YEAR

LISTED ON GARTHSUPPORT: YES

Position of Data Plate : on the right side of BBQ frame

Features

Hood with glass window.
Temperature gauge in hood.
Black enamel warming rack.
Enamel cast iron hotplate & grill.
Black matt enamel cast iron burner
Rear Burner



PART NUMBER	PART NAME	SUPPLIER CODE
1	Temperature gauge bowl	TG-B05
2	Temperature gauge bezel	BS111019
3	Temperature gauge	N160307
4	Hood outer top	CPHD6-02301-09060-085
5	Rubber bumper	K2224
6	V shape flame tamer	FT-001-06-080
7	Grillsmart grill	B03058-M
8	Warming rack	CPBQ6-0101-01000-011
9	Grillsmart hotplate	B03057-M
10	Fat tray	CPBQ6-02002-10060-080
11	Front Fat tray handle	CPBQ6-0901-09060-080
12	Oil cup box	CPTR0-8001-05050-080
13	Fascia support panel	CPBQ0-4104-04150-018
14	Ignition box	PI-PT01
15	BBQ front decoration part	CPBQ6-2201-07050-018
16	Fascia	CPBQ6-02302-09060-085
17	Fascia heat shield panel	CPBQ6-2402-05050-080
18	Left fat tray support	CPBQ0-1001-04120-080
19	Rear burner cover	CPBQ0-5101-04070-011
20	Hood hinge pin	CPHD0-0101-01000-077
21	Hood hinge holder	CPHD0-0301-04000-077
22	Hood hinge screw	CPHD0-0201-01000-077
23	Back fat tray support	CPBQ6-5701-04000-080
24	BBQ frame	CPBQ6-2802-00000-011
25	Front fat tray support	CPBQ6-5601-04000-080
26	Main burner gas valve	GC-092A
27	Rear burner gas valve	GC-093A
28	Rear burner control knob bezel	BS180123
29	Main burner control knob bezel	BS180327
30	Rear burner control knob	BKNB-237A
31	Main burner control knob	BKNB-217A
32	S/S Flexible Pipe for rear burner	FP-120-03
33	Main burner	BR160122
34	Main burner Ignition pin	Q3558
35	Rear burner	TMA0828
36	Rear burner holder	CPBQ0-5401-04100-011

PART NUMBER	PART NAME	SUPPLIER CODE	
37	Rear burner ignition pin & ignition wire	UL-1700	
38	Rear burner ignition pin holder	CPBQ0-07401-04100-011	
39	Built in bracket	CPBQ0-5201-04150-011	
40	Right fat tray support	CPBQ0-1101-04120-080	
41	Oil channel	CPBQ6-1302-10050-080	
42	BBQ support foot	CPBQ0-5301-00000-011	
43	Hose and regulator	AU	RC008002
		NZ	RC008006
44	Bolt pack	BP-B287-15P	

garth
outdoor leisure