

**Garth Code : FO4-007-400-AA-S004.22**  
**Customer Item ID : N/A**  
**APN : 9333417023821**  
**BBQ Name on Carton : Ranger PRO 400**  
**BBQ Name on Fascia :Fornetto & Ranger Pro 400**

**Component Breakdown**

Code	Box Length	Box Width	Box Height	Net Weight	Gross Weight
FO4-007-400-AA-S004.22	830mm	620mm	605mm	35.2kg	42kg

**Assembled Dimensions**

Overall Length	Overall Width	Overall Height	Overall Weight
825mm	622mm	574mm	35.2kg

**Miscellaneous Information**

Cooking Area                    720mm x 442mm  
 Total Heat Input                16kw  
 Supply Pressure                28-30/37mbar  
 Gas Type                         Propane / Butane  
 BBQ cover                        NO

Hood Glass Window: YES

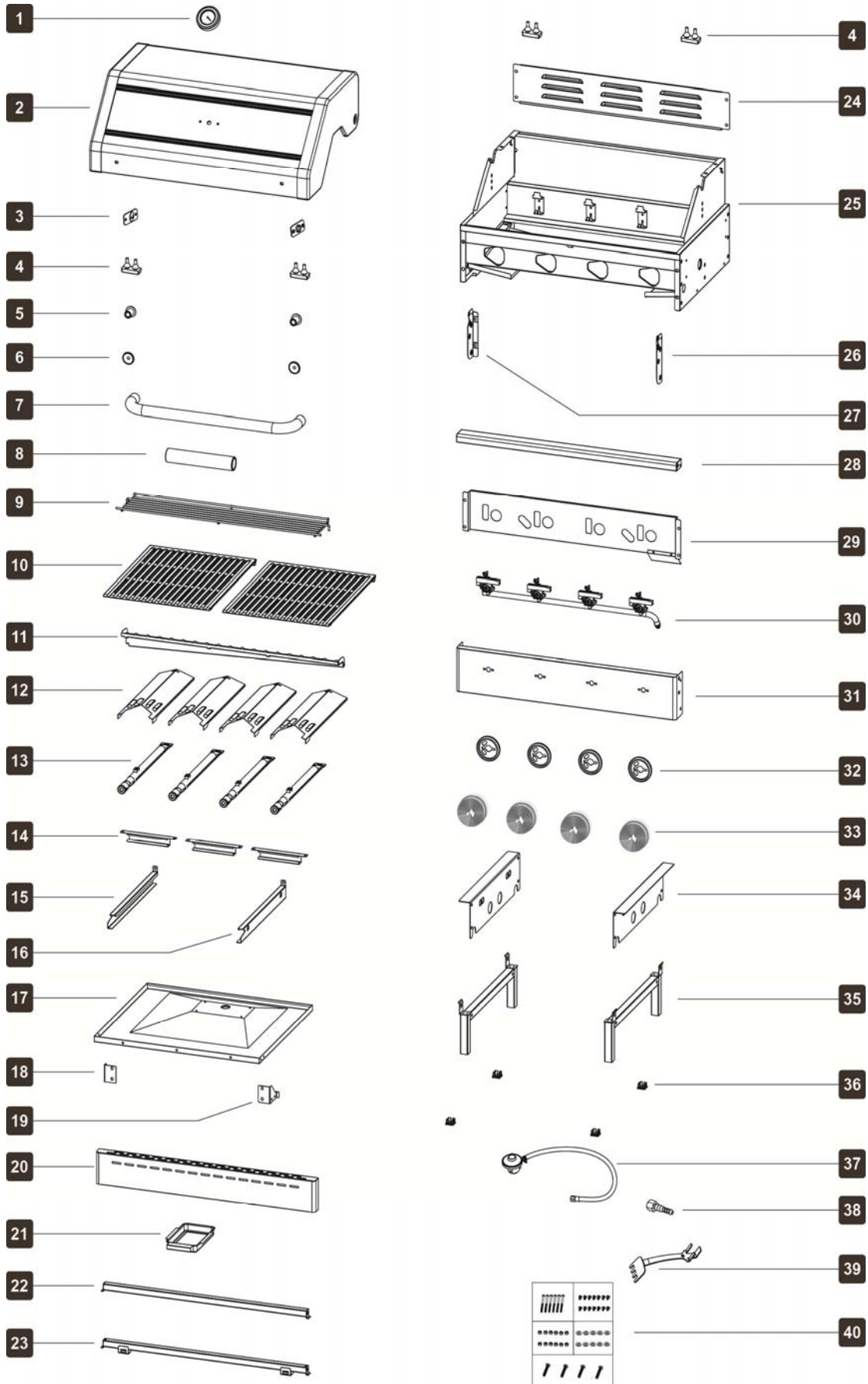
LISTED ON GARTHSUPPORT: YES



**Position of Data Plate : In the back of the BBQ**

**Features**

- 75mm S/S round temp gauge
- 409 S/S tube burner
- Shiny black powder coating hood
- Cast Iron Grill x2, Black Matt Enamel



PART NUMBER	PART NAME	SUPPLIER CODE	
1	Temp gauge	8803A026-FOR	
2	Hood outer	18HD4-02301-00000-000	
3	Hood hinge pin	PB22021810	
4	Front side rubber bumper	HOB0190009	
5	Hood handle socket	K5-13APC0008	
6	Hood handle decoration cup	1CHD0-02401-08070-076	
7	Hood handle	1CHD4-01101-08000-081	
8	Hood handle cover	7904A0009	
9	Warming rack	18BQ4-00101-01000-011	
10	Grill	B03111-M	
11	Oil channel	18BQ4-01302-10050-080	
12	V shape flame tamer	18BQ0-00401-06060-080	
13	Burner	30mbar	HAB0160010
		50mbar	Y.2.13.034
14	Cross lighter	1CBQ0-02701-10050-081	
15	Left fat tray support bracket	1CBQ0-08801-05120-080	
16	Right fat tray support bracket	1CBQ0-08901-05120-080	
17	Fat tray panel	1CBQ4-02002-05060-080	
18	Left fat tray handle mounting bracket	88BQ0-09001-05120-080	
19	Right fat tray handle mounting bracket	88BQ0-09101-05120-080	
20	Fat tray handle	1CBQ4-00901-10060-081	
21	Oil cup	CPTR0-8001-05050-080	
22	Back fat tray support	1CBQ4-05701-00000-009	
23	Front fat tray support	1CBQ4-05601-00000-009	
24	BBQ frame back cover	18BQ4-03301-04050-012	
25	BBQ frame body	18BQ4-02803-00000-011	
26	Fascia right support panel	1CBQ0-04201-05120-080	
27	Fascia left support panel	1CBQ0-04101-05120-080	
28	BBQ front decoration part	1CBQ4-02201-04060-018	
29	Fascia heat shield panel	1CBQ4-02402-05035-080	
30	Manifold set	50mbar	18BQ4-09804-00000-000
		30mbar	18BQ4-09802-00000-000
31	Fascia	18BQ4-02307-10050-085	
32	Main burner knob bezel	BS180327	
33	Main burner knob	BKNB-264A	
34	Built in bracket	1CBQ0-05201-10150-080	
35	BBQ support foot	1CBQ0-05301-10000-000	
36	Leg socket	Y.2.27.005	
37	Hose and Regulator	IT	A310-151
		NL	NL-G1
		BE	A310-158
		MLT	A100-156
		ES	A200-092
		DE	A310-146
38	Universal adaptor	DE-0810 (N/A for DE, AT, CH)	
39	Grill lifter	TMA1118	
40	Bolt Pack	BP-FO4-007-400-AA	