

Garth Code : G3554OD

Customer Item ID :620599

APN : 5057715426187

BBQ Name on Carton : Fervor Ranger BBQ Kitchen

BBQ Name on Fascia :

Component Breakdown

Code	Description	Box Length	Box Width	Box Height	Net Weight	Gross Weight
G3554OD	Trolley	755MM	645MM	255MM	31.61Kg	34.41Kg
G3554OD	BBQ	775MM	595MM	455MM	28.35Kg	31.76Kg

Assembled Dimensions

Overall Length	Overall Width	Overall Height	Overall Weight
1980MM	590MM	1120MM	59.96KG

Miscellaneous Information

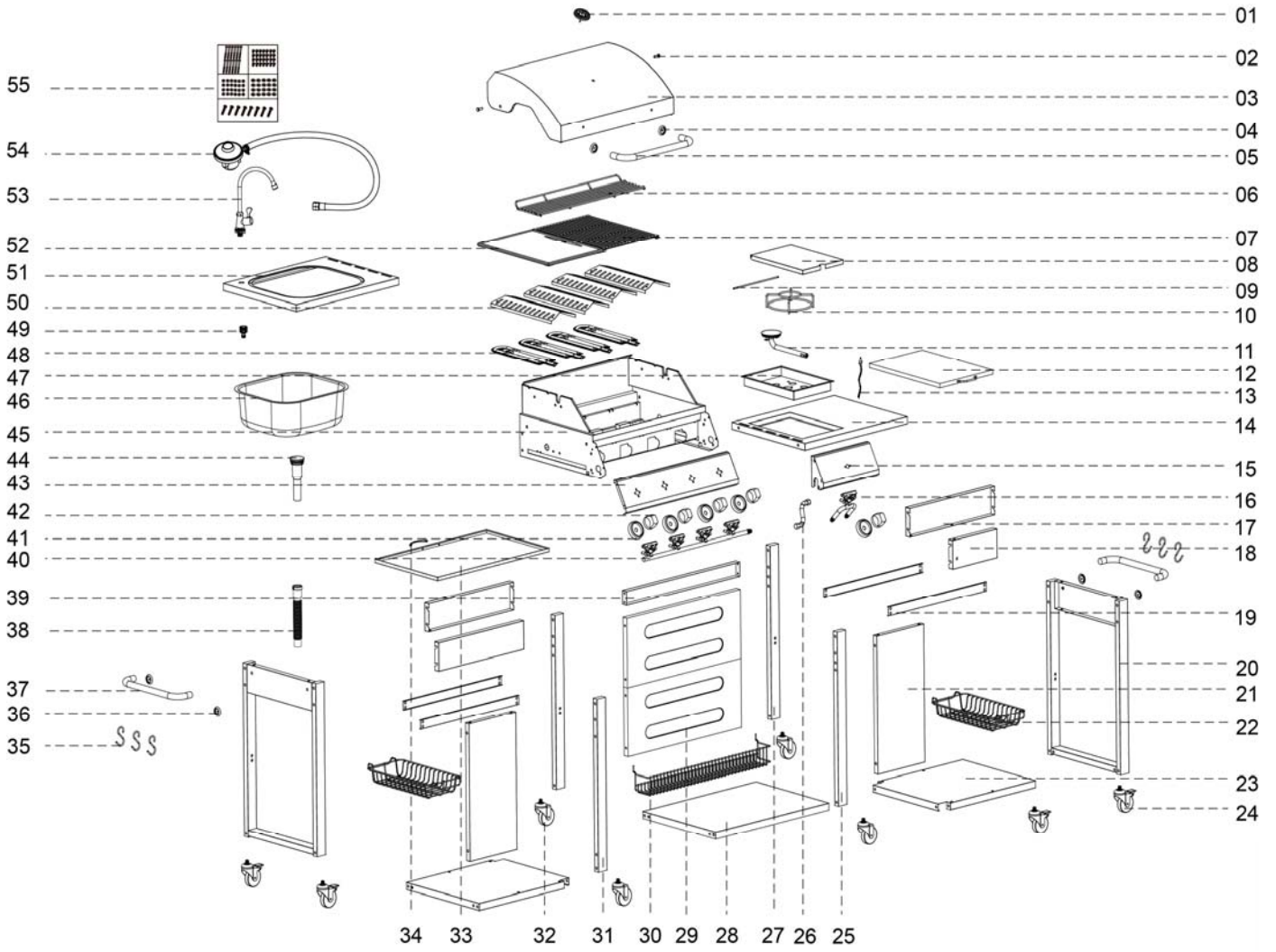
Cooking Area	650*454mm
Total Heat Input	17.2kw
Supply Pressure	30 mbar
Gas Type	PROPANE/BUTANE
NG Conversion	NO
BBQ cover	NO



Position of Data Plate :

Features

- S/S Hood with handle
- Powder coated BBQ frame with S/S Fascia
- Black Matt enamel cast iron hotplate and grill
- Aluminium Coated V Shape Flame Tamer
- Jet Flame Ignition to all Burners
- With sink and tap
- Chopping board
- Wire baskets
- Trolley with castors



PART NUMBER	PART NAME	SUPPLIER CODE
1	Temp gauge	G3HD0-03201-00000-000
2	Hood hinge	G3HD0-00201-01000-082
3	Hood outer	G3HD4-02301-10000-080
4	Hood handle decoration base	G3HD0-02201-08070-081
5	Hood handle	G3HD4-01101-08000-081
6	Warming rack	G3BQ4-00101-01000-011
7	Grill	G3BQ4-00301-24000-083
8	Side burner lid	G3TR0-00601-10000-118
9	Side burner lid hinge	G3TR0-17501-08000-081
10	Side burner trivet	G3TR0-04901-01000-082
11	Side burner	G3TR0-21801-01000-011
12	Chopping board	G3TR0-16201-00000-000
13	Side burner ignition wire	G3TR0-02901-00000-000
14	Side burner top bench	G3TR0-00201-10080-118
15	Side burner Fascia	G3SB0-01301-10080-118
16	Side burner gas valve	G3SB0-01401-00000-000
17	Trolley front top cross bar-long	G3TR0-20501-04080-117
18	Trolley front top cross bar-short	G3TR0-20901-04050-117
19	Wire basket support bar	G3TR0-20701-04100-117
20	Side leg frame	G3TR0-20801-00000-117
21	Trolley front panel – side	G3TR0-21001-04050-117
22	Wire basket	G3TR0-20601-00000-082
23	Trolley bottom panel-side	G3TR0-21101-04080-117
24	Lockable castor	G3TR0-02601-00000-000
25	Right front leg	G3TR0-21301-01070-117
26	Side burner flexible pipe	G3TR0-21401-09000-080
27	Rear leg	G3TR0-21501-01070-117
28	Trolley bottom panel – middle	G3TR4-01901-04080-117
29	Trolley front panel-middle	G3TR4-10901-04080-117
30	Front storage basket	G3TR0-11301-00000-117
31	Left front leg	G3TR0-21201-01070-117
32	Unlockable castor	G3TR0-02701-00000-000
33	Fat tray panel	G3BQ4-02001-05060-082
34	Back Fat tray handle	G3TR0-02101-12000-082
35	Side shelf hooks	G3TR0-11201-08000-082

PART NUMBER	PART NAME	SUPPLIER CODE
36	Side handle decoration base	G3TR0-21601-08070-081
37	Side handle	G3TR0-21701-08070-081
38	Sink drainage hose	G3ST0-01501-00000-000
39	Trolley rear cross bar	G3TR4-01501-04080-117
40	Manifold set	G3BQ4-09801-00000-000
41	Control knob bezel	G3BQ0-02501-00000-000
42	Control knob	G3BQ0-02601-00000-000
43	Fascia	G3BQ4-02301-10060-081
44	Drainage set	G3ST0-01601-00000-000
45	BBQ frame body	G3BQ4-02801-00000-117
46	Sink	G3ST0-01401-10080-081
47	Side burner bowl	G3TR0-00301-10080-081
48	Burner	G3TR0-21801-06070-080
49	Tap adaptor	G3ST0-01701-00000-000
50	V shape flame tamer	G3BQ0-00401-10060-080
51	Sink Top bench	G3ST0-00101-10080-118
52	hotplate	G3BQ4-00201-24000-083
53	Tap	G3ST0-01801-00000-000
54	Hose and Regulator	A100-LG800
55	Bolt Pack	BP-G35540D