

Garth Code : B310

Customer Item ID : 3180705

APN : 9333417014232

BBQ Name on Carton : WOK Burner

BBQ Name on Fascia : None

#### Component Breakdown

Code	Description	Box Length	Box Width	Box Height	Net Weight	Gross Weight
		500mm	385mm	190mm	5.35 Kg	6.6 Kg

#### Assembled Dimensions

Overall Length	Overall Width	Overall Height	Overall Weight

#### Miscellaneous Information

Cooking Area	N/A
Total Heat Input	10.5Mj/hr for AU and 9.3 Mj/hr for NZ
Supply Pressure	2.75kPa
Gas Type	ULPG
NG Conversion	YES
BBQ cover	NO

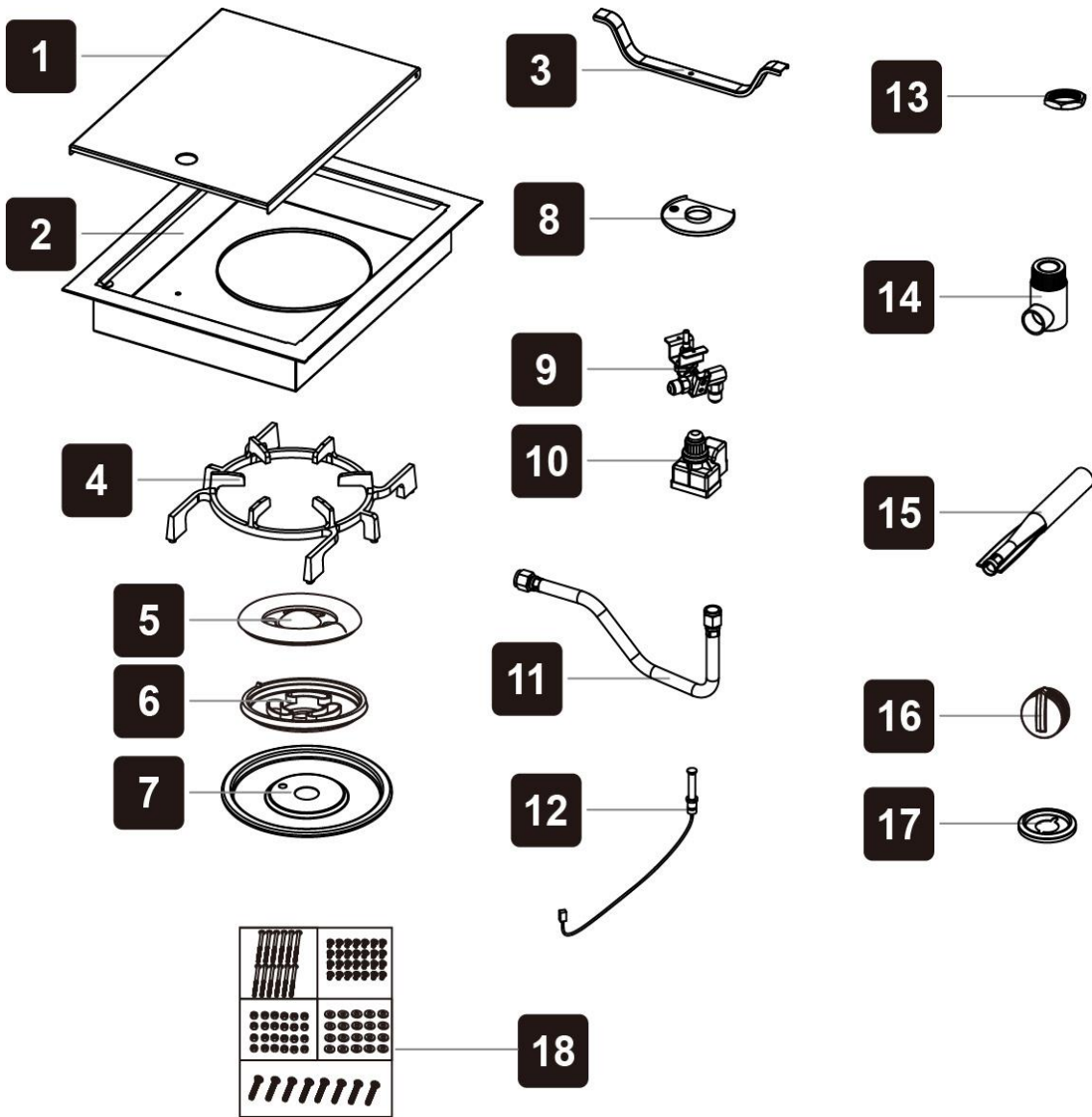


LISTED ON GARTHSUPPORT: YES

Position of Data Plate :inside of the Door

#### Features

- Cast iron trivet
- Brass wok burner
- 304 S/S
- Electronic ignition



PART NUMBER	PART NAME	SUPPLIER CODE	AVAILABLE OR NOT
1	Side Burner Lid	B288-14-SB-01	
2	Side Burner Base	B288-14-SB-02	
3	Side Burner Under Strut	SBLF03	
4	Side Burner Trivet	SB-101	
5	Wok Side Burner Top	TMB001-2	
6	Wok Side Burner Base	TMB001-1	
7	Spill Bowl	SB002	
8	Ignition Pin Holder	TMA0508	
9	Side Burner Valve (AU)	N0029A	
	Side Burner Valve (NZ)	N0029A-NZ	
10	Electronic Ignition	PI2P-032	
11	Side Burner Hose	RC1100	
12	Ignition Wire	Q3726 (BC-01)	
13	Wok Elbow Nut	TMA0503	
14	Wok Burner Elbow	TMA0504	
15	Venturi	TMA0506	
16	Control knob bezel	BS120415-C	
17	Control knob	BKNB-217A	
18	Bolt pack	BP-B310	

**garth**  
outdoor leisure