

Garth Code : M222S-LCC

Customer Item ID (M10 AU) :722772

Customer Item ID (HTH) : 5319595

APN : 9316487172002

BBQ Name on Carton : BBQ 4B S/S W SIDE BURNER GRILLED

BBQ Name on Fascia : GRILLED

Component Breakdown

Code	Description	Box Length	Box Width	Box Height	Net Weight	Gross Weight
M222S-LCC	WHOLE BBQ	765mm	620mm	570mm	36.2Kg	40.3Kg

Assembled Dimensions

Overall Length	Overall Width	Overall Height	Overall Weight
1330mm	693mm	1160mm	36.2Kg

Miscellaneous Information

Cooking Area	658 x402MM
Total Heat Input	46.14 Mj/hr
Supply Pressure	2.75kPa
Gas Type	ULPG
NG Conversion	No
BBQ cover	No
Warranty	12 Months



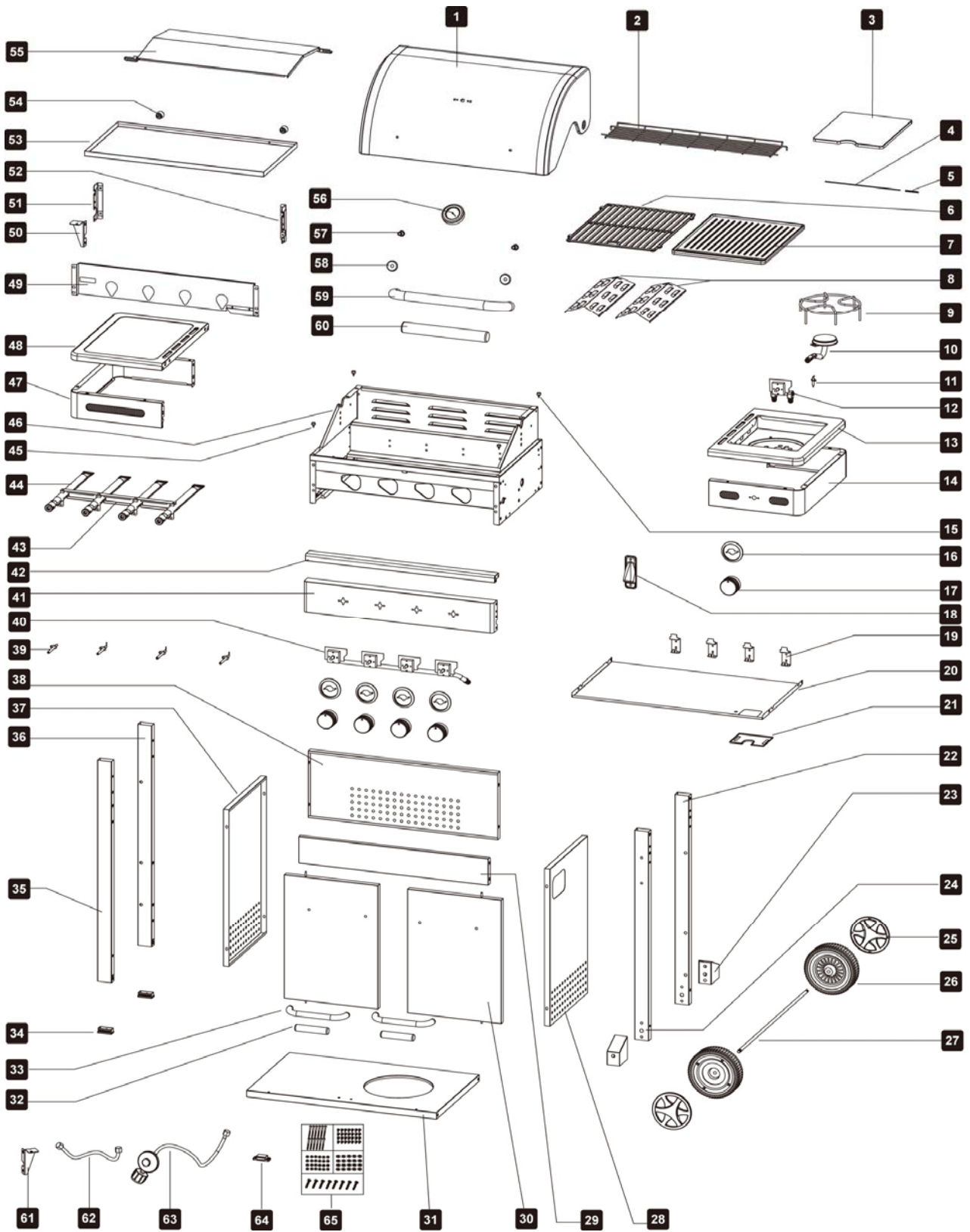
LISTED ON GARTHSUPPORT: YES

Position of Data Plate :inside of the left door

Features

- S/S Hood with #4 snow flower brushed
- Black high temp painted BBQ Frame with S/S Fascia
- Black Food Grade Painted Cast Iron Hotplate and Grill
- Aluminium Coated V Shape Flame Tamer
- Jet Flame Ignition to Right Burner

M222S-LCC



PART NUMBER	PART NAME	SUPPLIER CODE
1	Hood	GMHD4-02301-10050-081
2	Warming rack	GM-F-4-01-01-000-011
3	Side burner lid	GM-T-0-06-04-060-069
4	Side Burner lid hinge	GM-T-0-47-08-000-000
5	side burner lid hinge spring	GM-T-0-48-01-000-CP
6	Grill	GM204004-GAR
7	Hotplate	PM204029-GAR
8	Flame tamer	GM203033-13
9	Side burner trivet	GM203063
10	Side burner	GM203805+GM203807
11	Side burner ignition pin	7802A3027
12	Side burner gas valve	7803D1804-2076+PM203806
13	Side burner bowl	GMTR0-05101-04050-002
14	Side burner decoration part	GM-T-0-02-04-050-069
15	rubber bumper A	GSN3B0017
16	Knob bezel	10-8803D0022
17	Knob	10-8803A1118
18	Bottle opener	BO-001
19	Burner support panel	GM-F-0-31-09-060-#4B
20	Gas bottle heat shield	GM-F-4-29-05-035-000
21	Regulator cover	GM-F-0-30-05-035-000
22	rear right leg	GM-T-0-43-04-000-069
23	BBQ axel cover	GM-T-0-53-04-050-069
24	front right leg	GM-T-0-44-04-000-069
25	Wheel cap	GM204D006
26	Wheel	M1834010
27	Wheel axle	GM-T-0-56-08-000-000
28	Cabinet right side panel	GM-T-4-18-04-050-069
29	Cabinet Front top decoration strip	GM-T-4-57-10-050-#4B(S)
30	Left door	GMTR4-02201-10050-081
	Right door	GMTR4-02301-10050-081
31	Cabinet Bottom panel	PM204007-GAR02
32	Door handle socket	GM-T-4-58-02-000-B
33	Door handle	GM-H-4-08-000-#4B
34	Leg socket	85080019
35	front left leg	GM-T-0-41-04-000-069
36	rear left leg	GM-T-0-42-04-000-069
37	Cabinet left side panels -R	GM-T-4-17-04-050-069
38	Cabinet back panel	GM-T-4-16-04-050-069
39	Main burner Ignition pin	88034001
40	Main burner Gas Valve	GM204806+7803D1804-2086
41	Fascia	GM-F-4-23-10-050-#4B
42	Fascia top decoration panel	GM-F-4-22-04-050-069
43	Cross lighter	GM-F-0-27-10-060-000
44	Burner	GM203055

PART NUMBER	PART NAME	SUPPLIER CODE
45	rubber bumper B	PM203P20012
46	BBQ frame	GM-F-4-B
47	side shelf decoration part	GM-T-0-01-04-050-069
48	Side shelf	GM-T-0-04-04-050-069
49	Fascia heat shield	GM-F-4-24-05-035-000
50	Side shelf attaching plate	GMTR4-09001-05150-080
51	Fascia left support panel	GM-F-0-18-04-050-069
52	Fascia right support panel	GM-F-0-17-04-050-069
53	Fat tray	GM-F-4-20-05-050-000
54	Fat tray knob	8804F0087
55	Fat tray heat shield	GM-F-4-33-05-050-00
56	Temp gauge	8803A026-NOV
57	Hood hinge	K5-13APC0008
58	Hood handle decoration cap	GM203067
59	Hood handle	GM-H-4-08-000-#4B
60	Hood handle socket	7904A0009
61	Side right shelf attaching plate	GMTR4-09101-05150-080
62	Side burner hose	BHST2B0049
63	Hose and regulator	RC008027
64	Magnet	GC078
65	Bolt Pack	BP-M222S-22