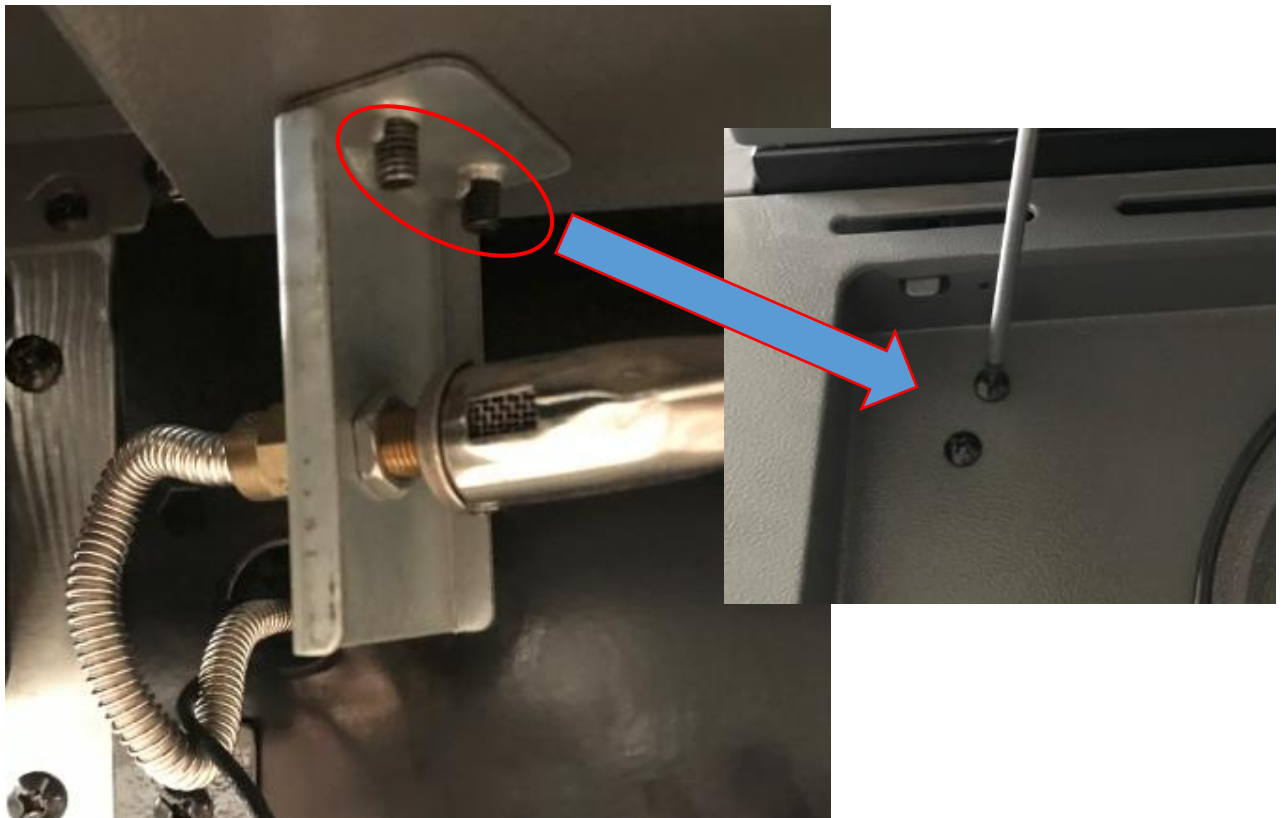


How to replace the manifold set

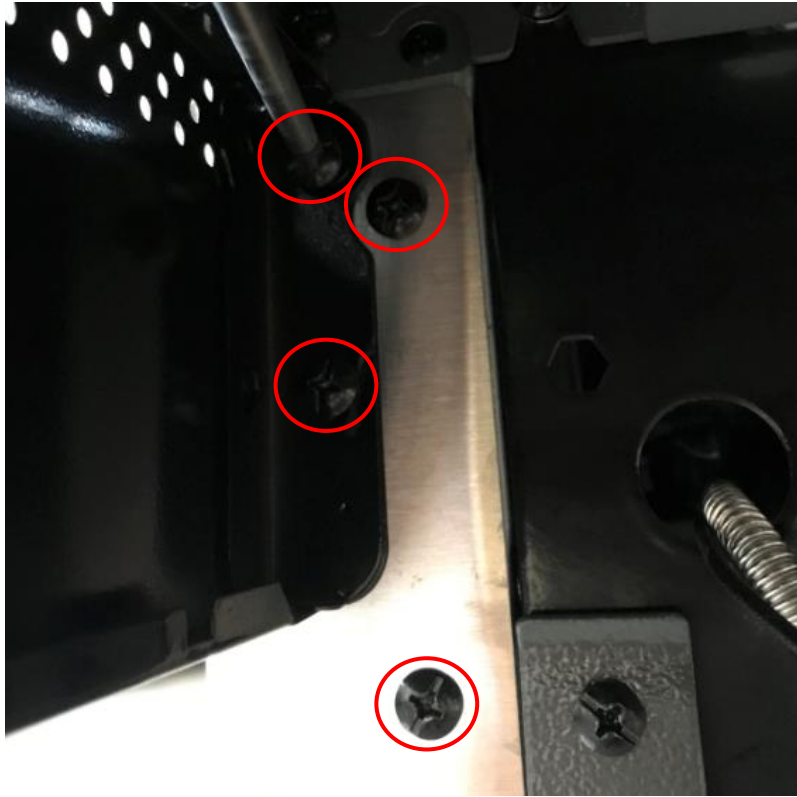
Step 1: Pull out the side burner ignition wire.



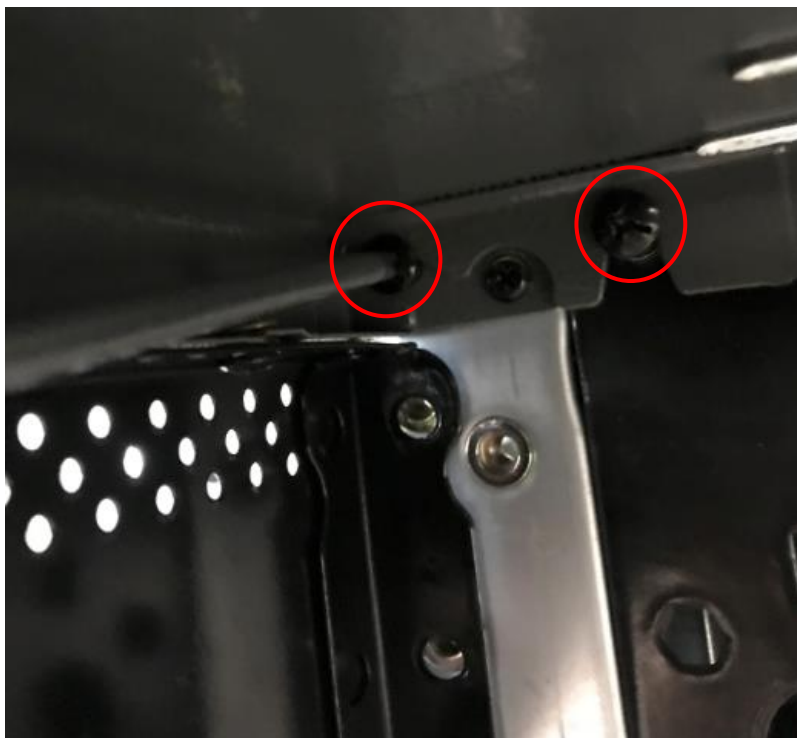
Step 2: Take out the bolt from the side burner injector bracket.



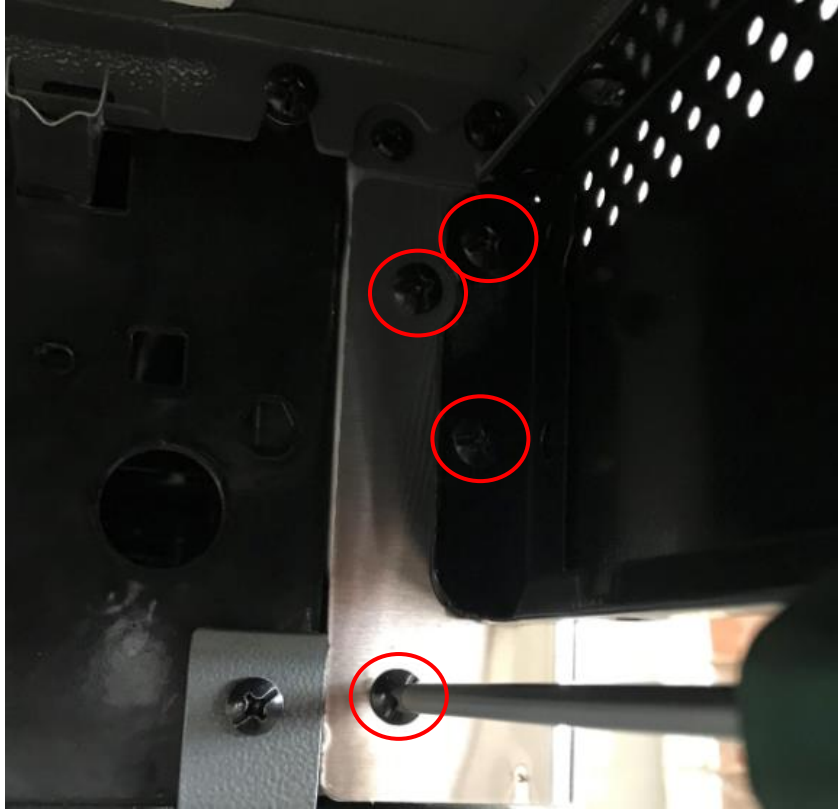
Step 3: Take out the four bolts on either side of the side burner shelf as the picture shows.



Step 4: Loosen the front fixing screws 3mm on either side of the side burner shelf, as the picture circles show.



Step 5: Take out the 4 screws on the left side shelf as the picture circles show.



Step 6: Loosen the front fixing screws 3mm on the left side shelf as the picture circles show.



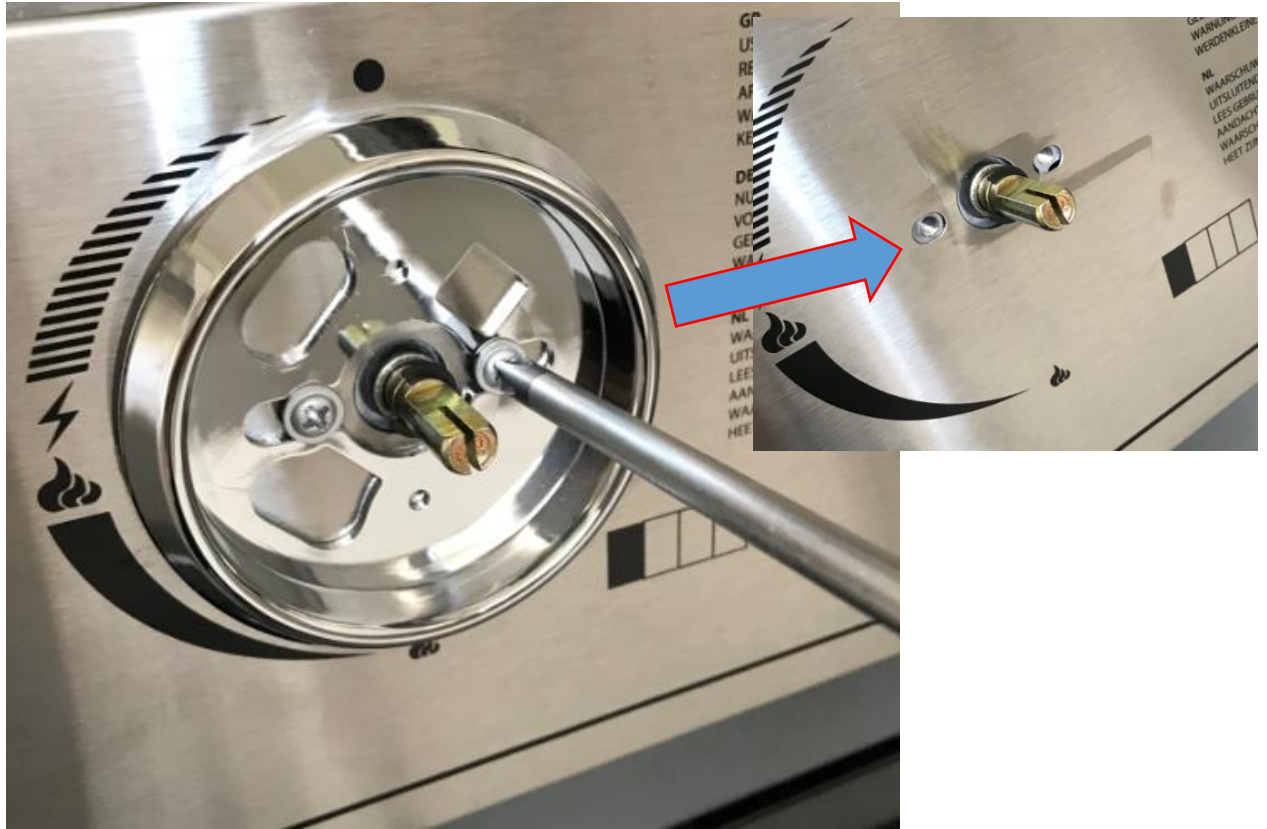
Step 7: Gently draw the fascia out as following image.



Step 8: Take out all the knobs.



Step 9: Remove all screws from the knob bezel.

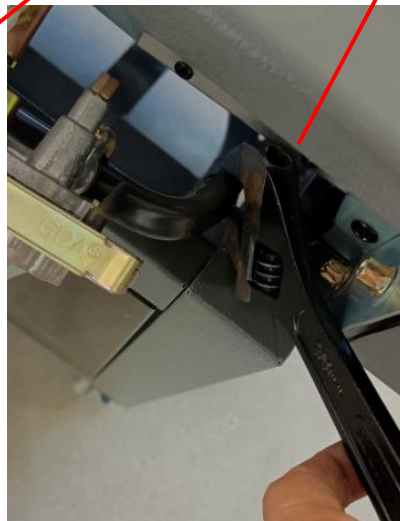
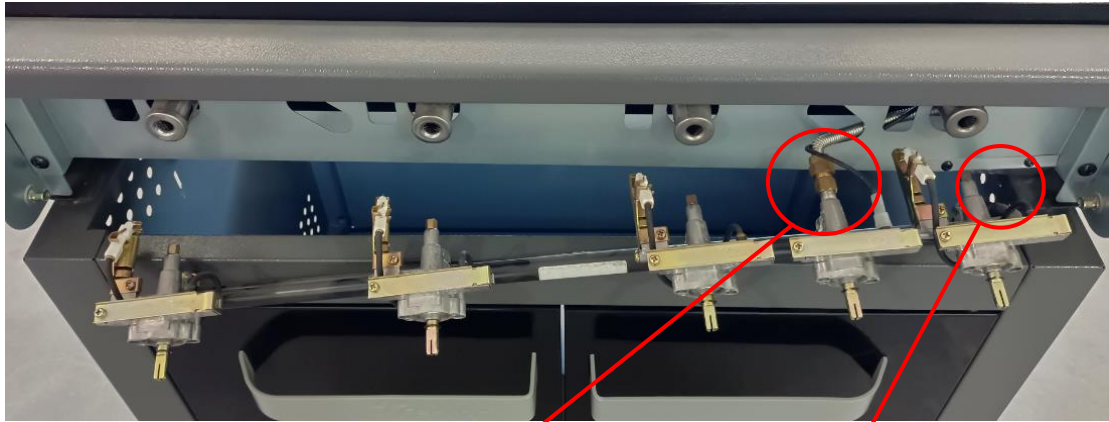


Step 10: Take out the fascia.





Step 11: Remove the side burner flexible pipe and the regulator as shown on image below.



Step 12:

- A. Replace with a new manifold and conduct a leak test.
- B. Reverse steps above to install the parts back. Please pay attention when installing the fascia, since each injector on the manifold must aim at the respective burner inlets.

