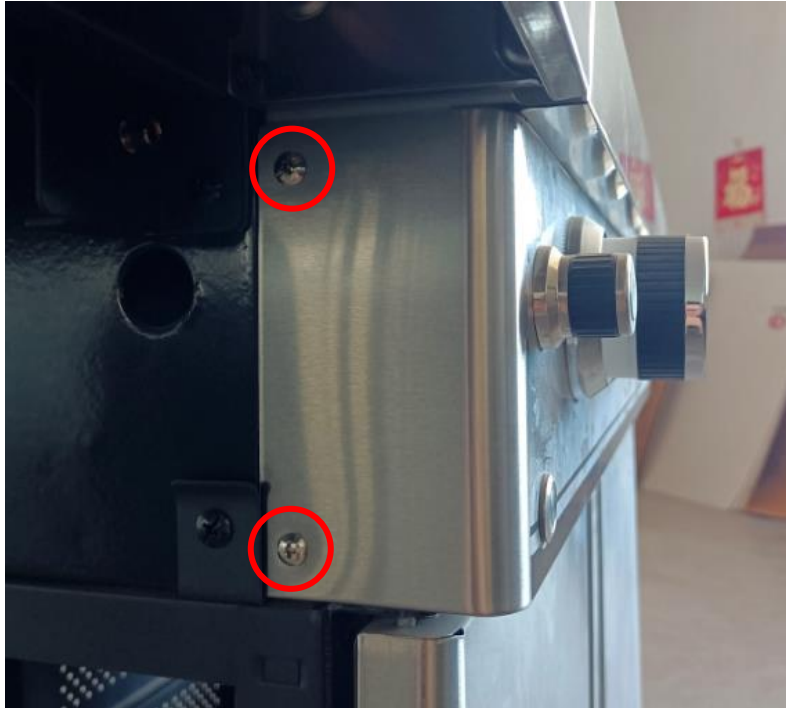
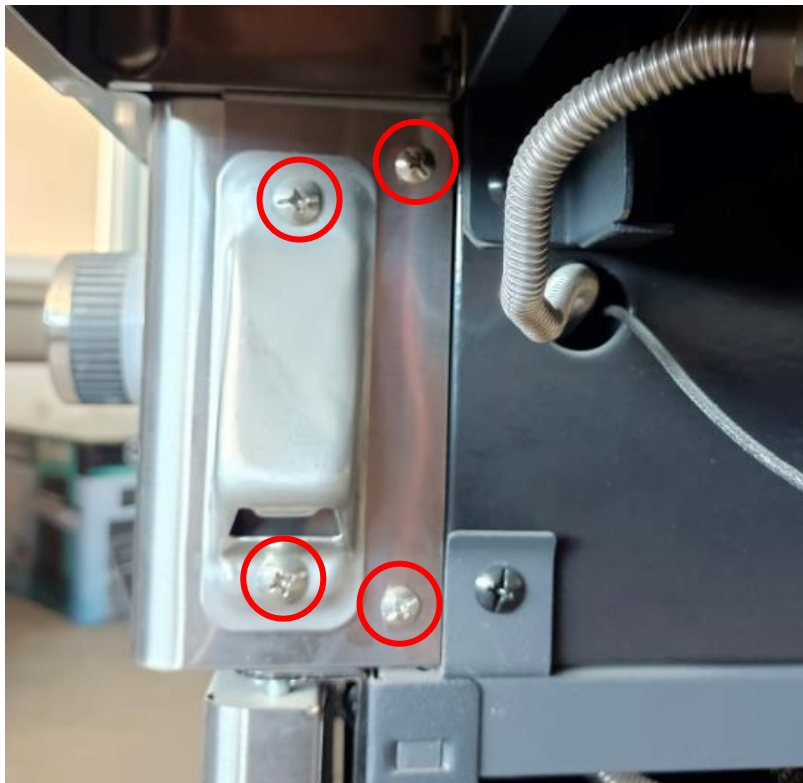


How to replace the knob light line

Step 1: Take out the bolts as the picture shows.



Step 2: Take out the bolts as the picture shows.





Step 3: Gently draw the fascia out as shown below.



Step 4: Take out all the knobs.



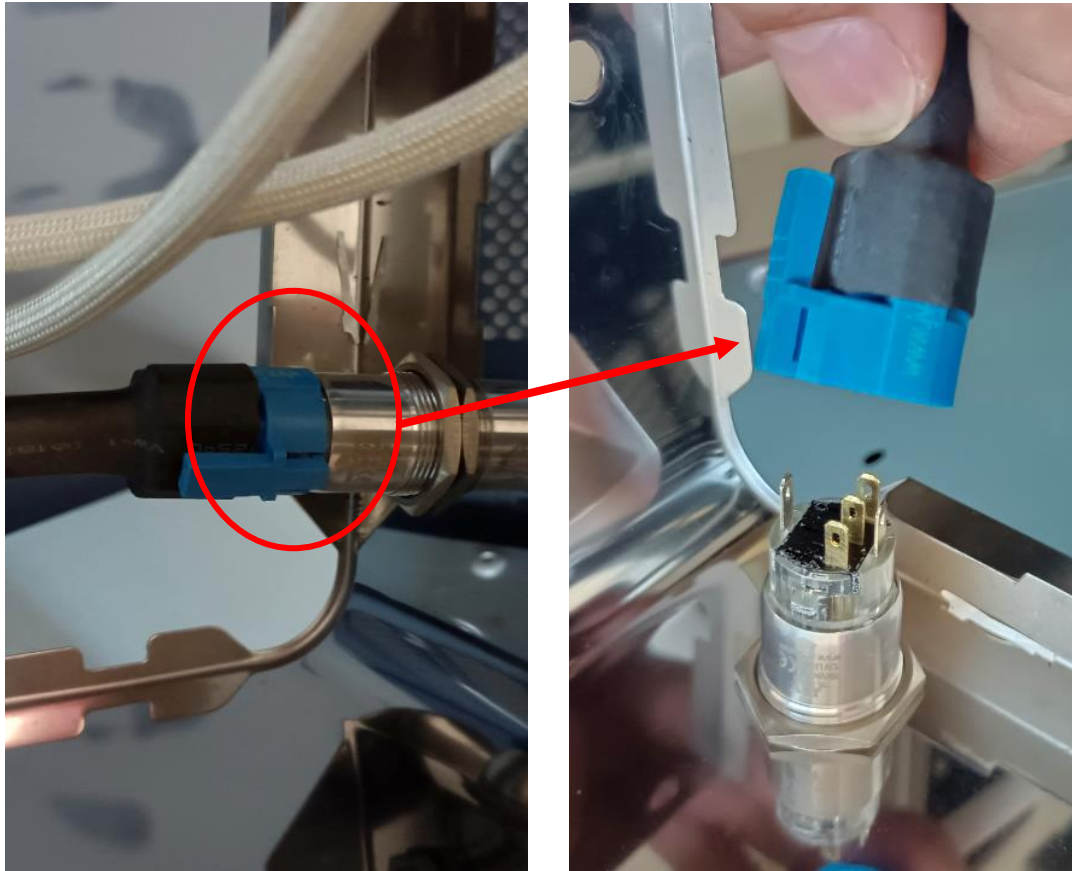
Step 5: Remove all screws from the knob bezel.



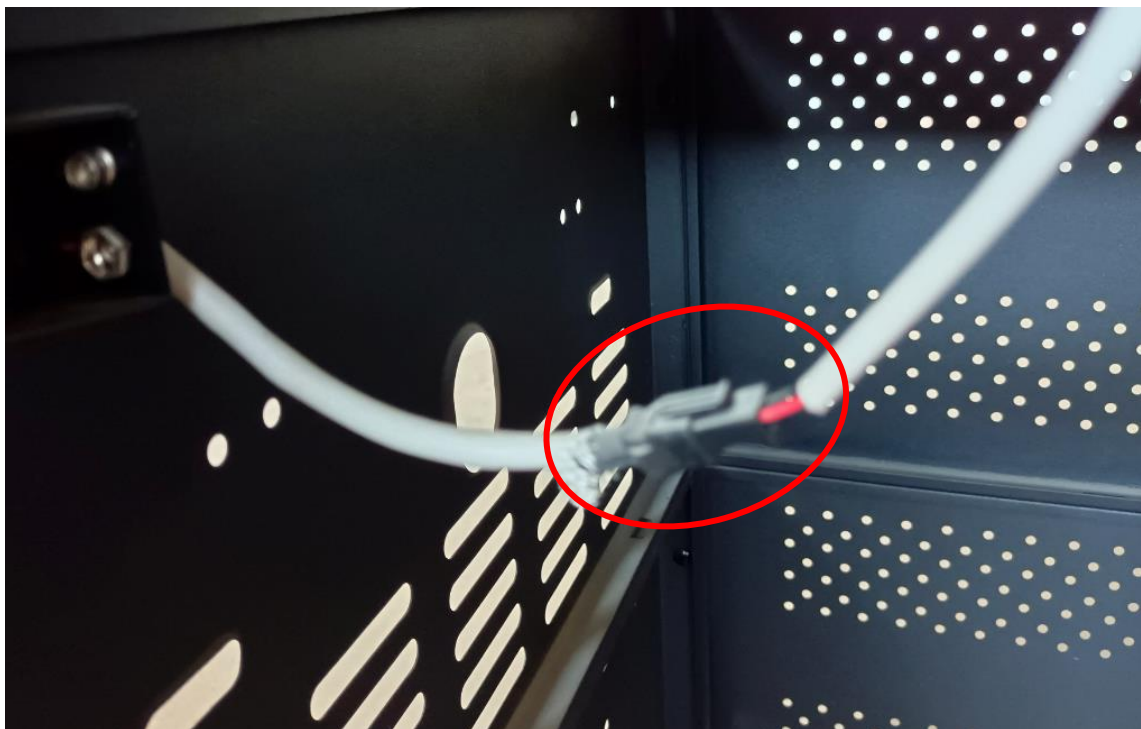
Step 6: Take out all the knob light connection ends.



Step 7: Separate the knob light line as the picture shows.



Step 8: Separate the knob light line as the picture shows.



Step 9: Replace with a new knob light line.



Step 10: Reverse steps above to install the parts back. Please pay attention when installing the fascia, since each injector on the manifold must aim at the burner inlets.

