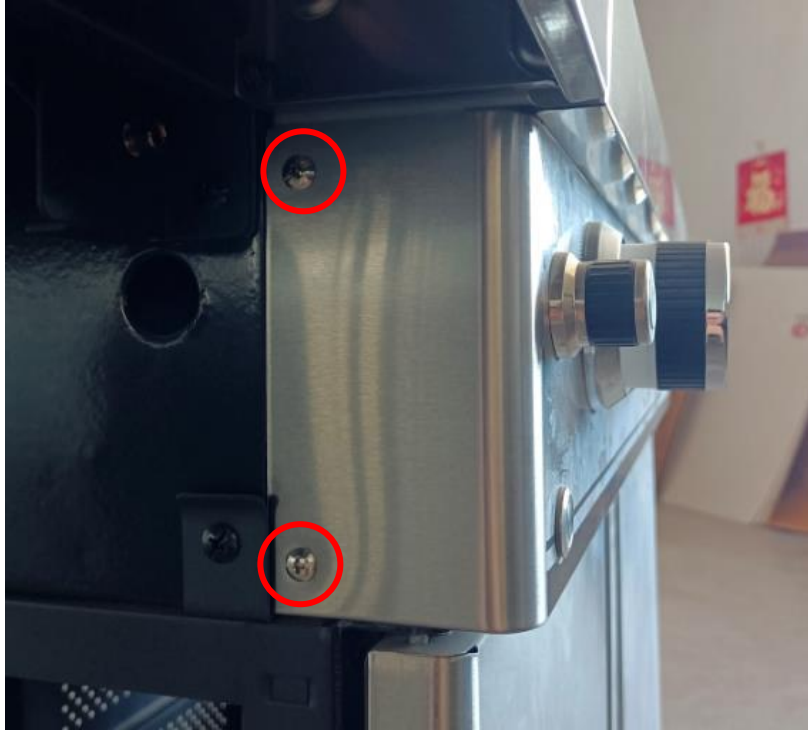
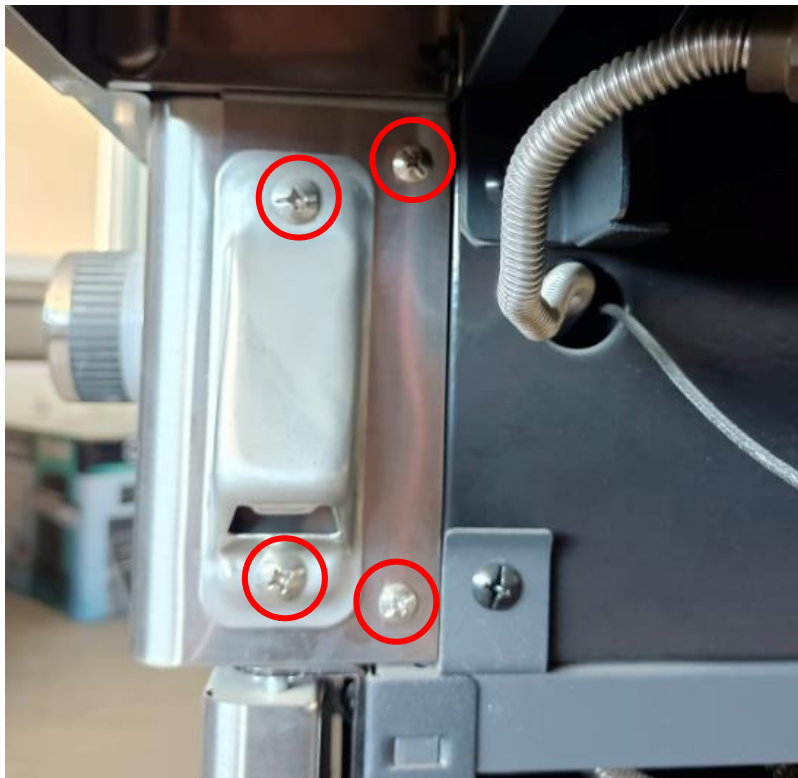


How to replace the manifold set

Step 1: Take out the bolts as the picture shows.

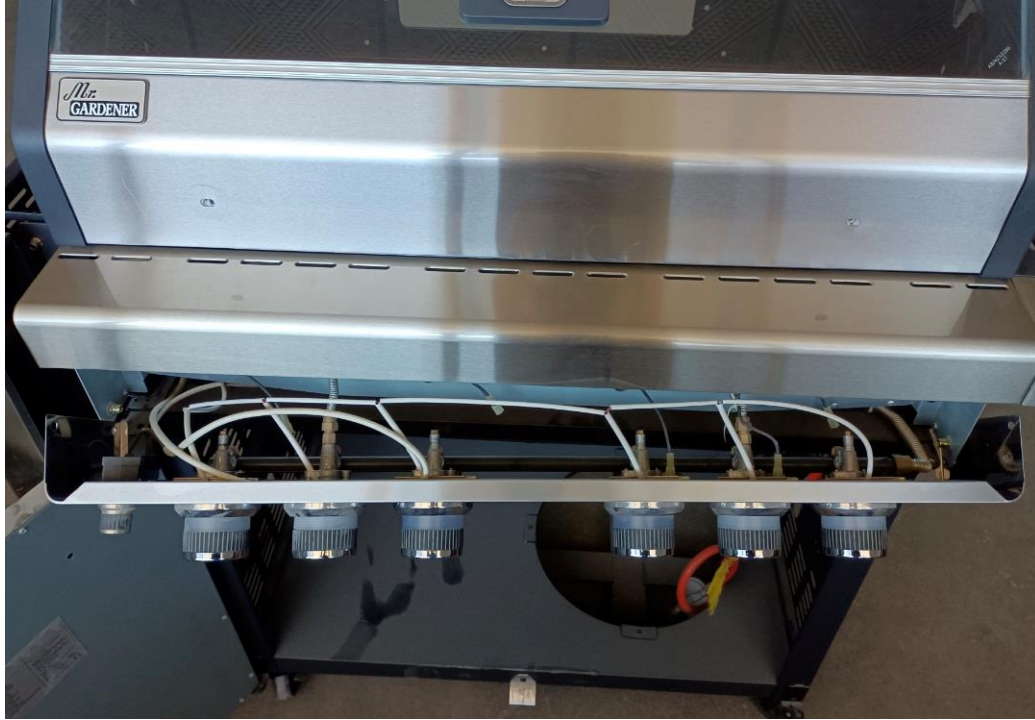


Step 2: Take out the bolts as the picture shows.





Step 3: Gently draw the fascia out as shown below.



Step 4: Take out all the knobs.



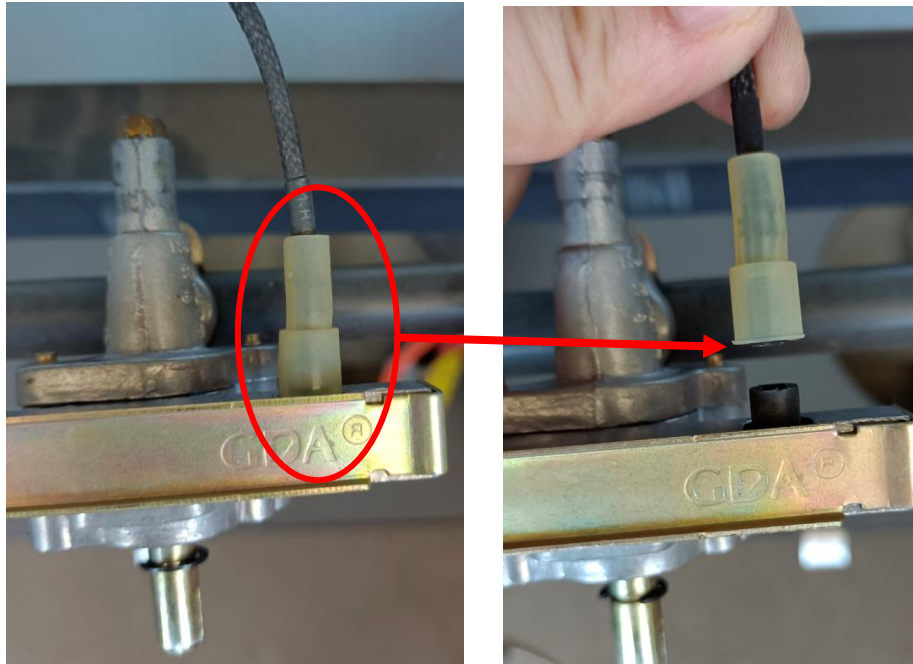
Step 5: Remove all screws from the knob bezel.



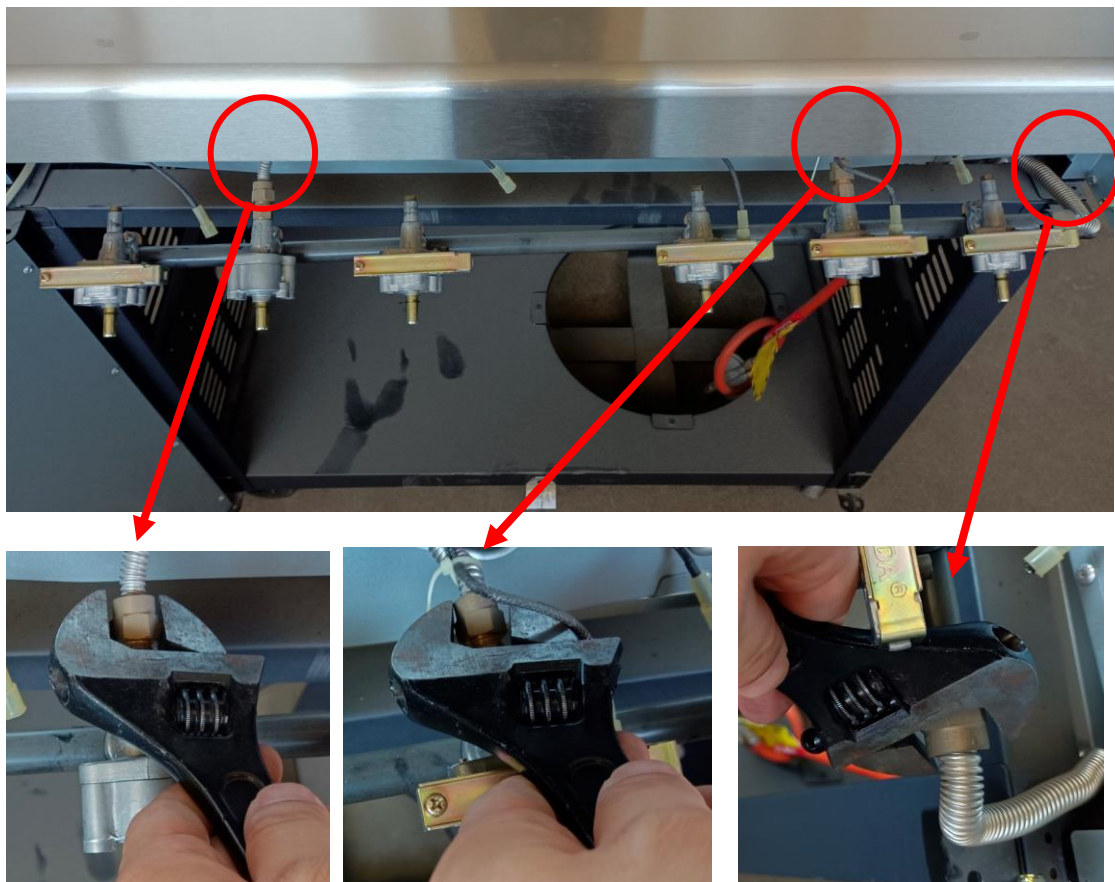
Step 6: Take out all the knob light connection end.



Step 7: Separate the ignition wire as shown in the following image.



Step 8: Remove the side burner flexible pipe, rear burner flexible pipe and the regulator as shown in the image.



Step 9:

- A. Replace with a new manifold and conduct a leak test.
- B. Reverse steps above to install the parts back. Please pay attention when installing the fascia, since each injector on the manifold must aim at the burner inlets.

