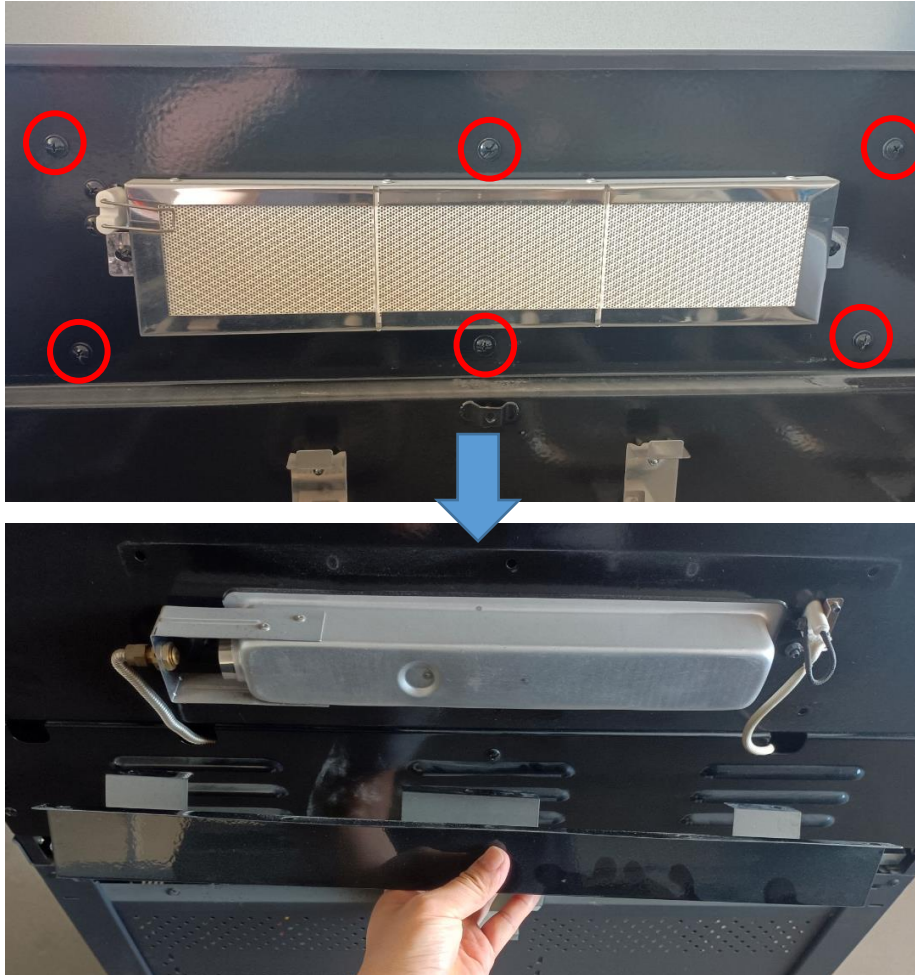
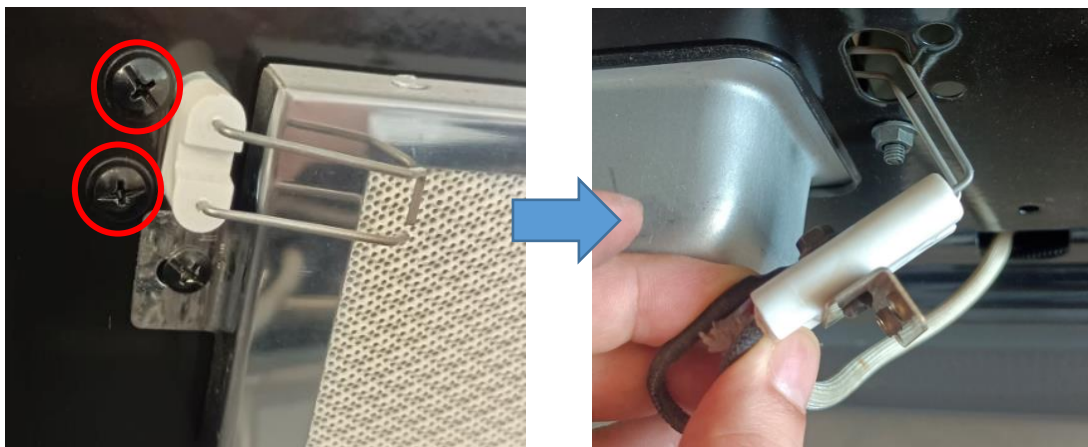


How to replace the rear burner ignition wire

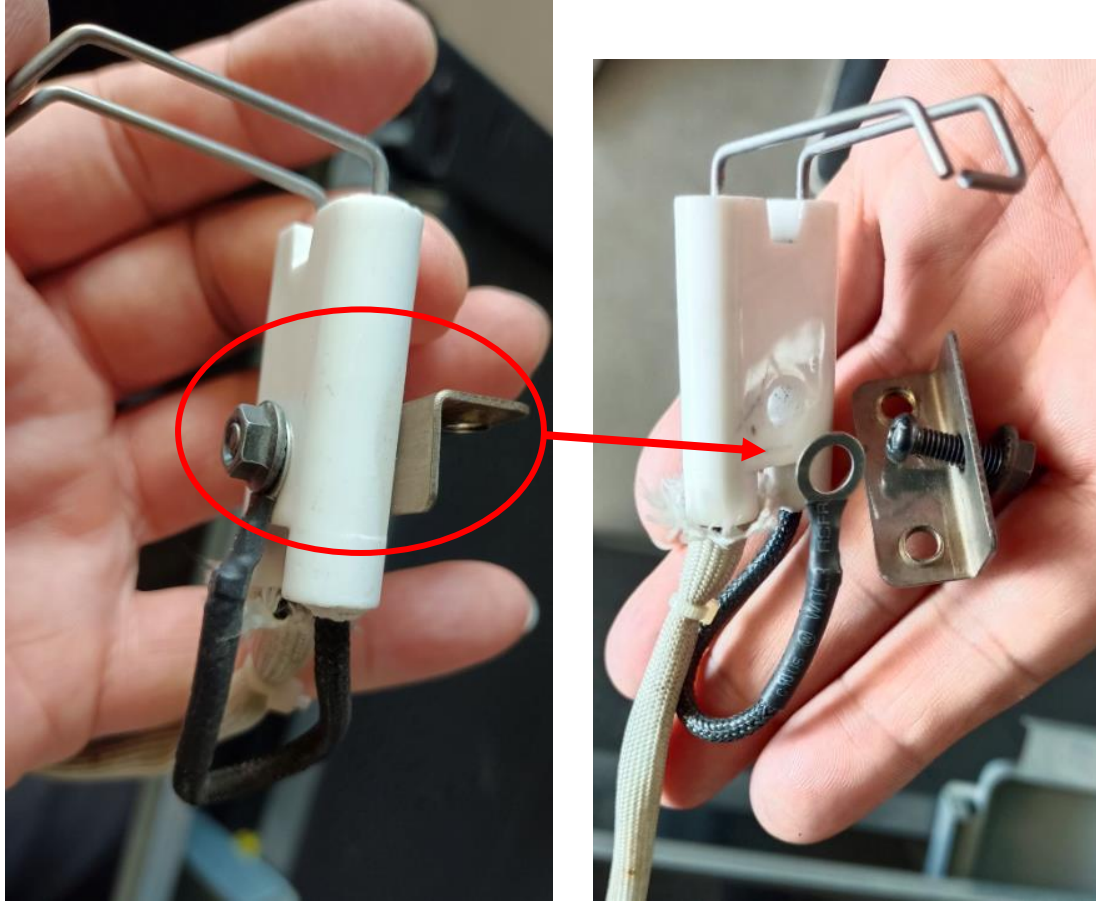
Step 1: Take out the bolts to get the rear burner cover out as the picture shows.



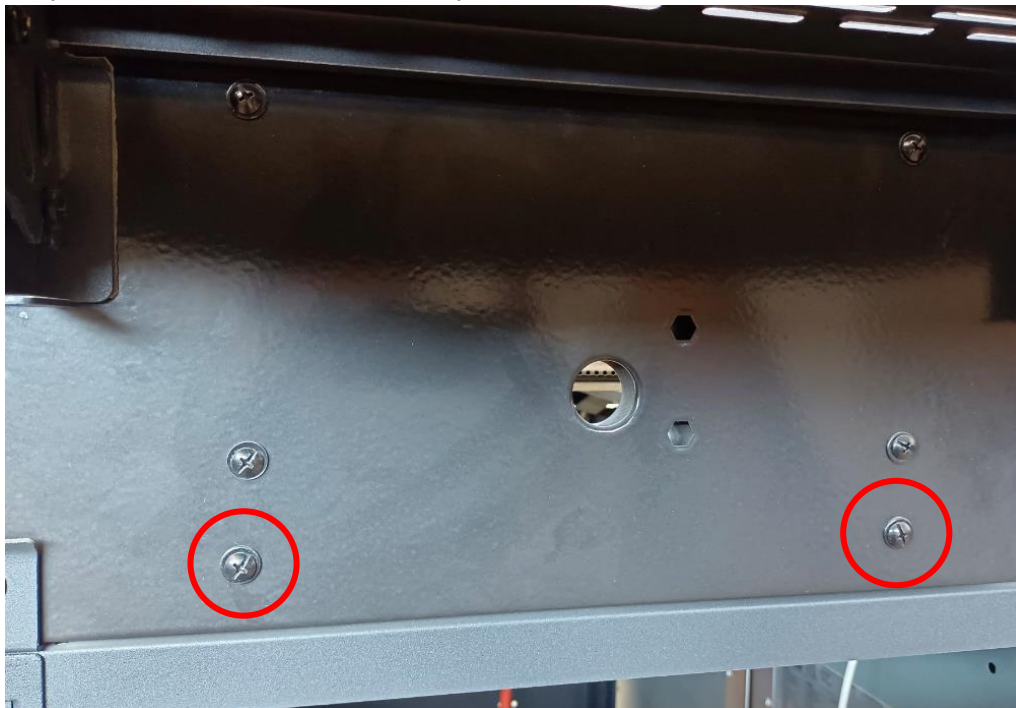
Step 2: Take out the bolts, then gently draw the rear burner ignition wire out.



Step 3: Separate the rear burner ignition pin holder as shown in the following image.

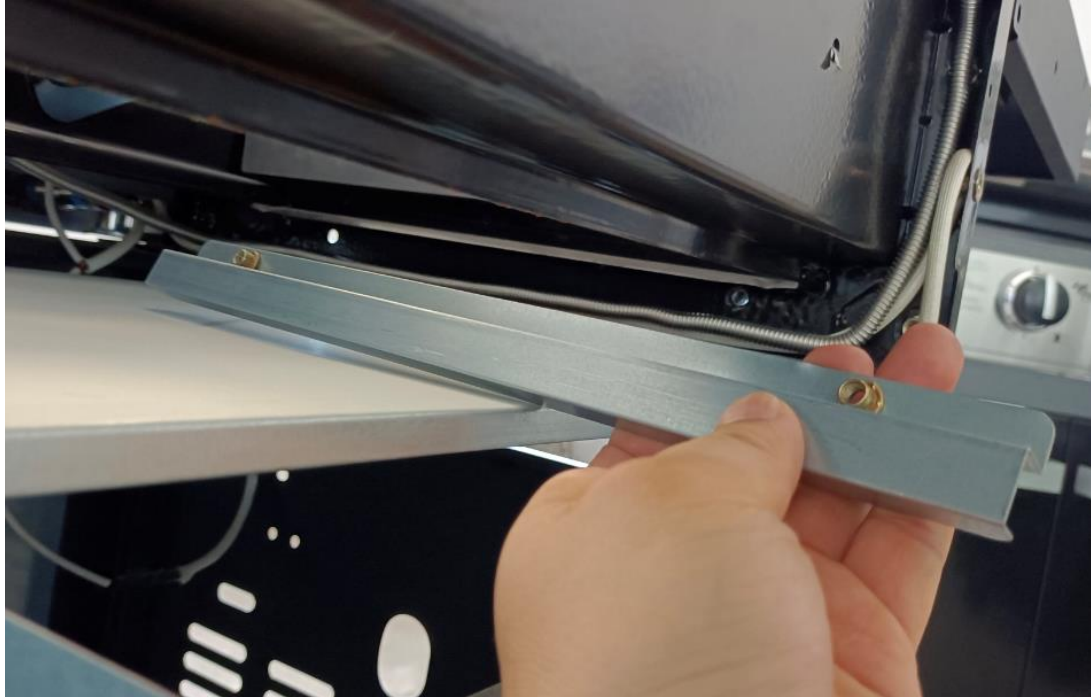


Step 4: Take out the bolts as the picture shows.

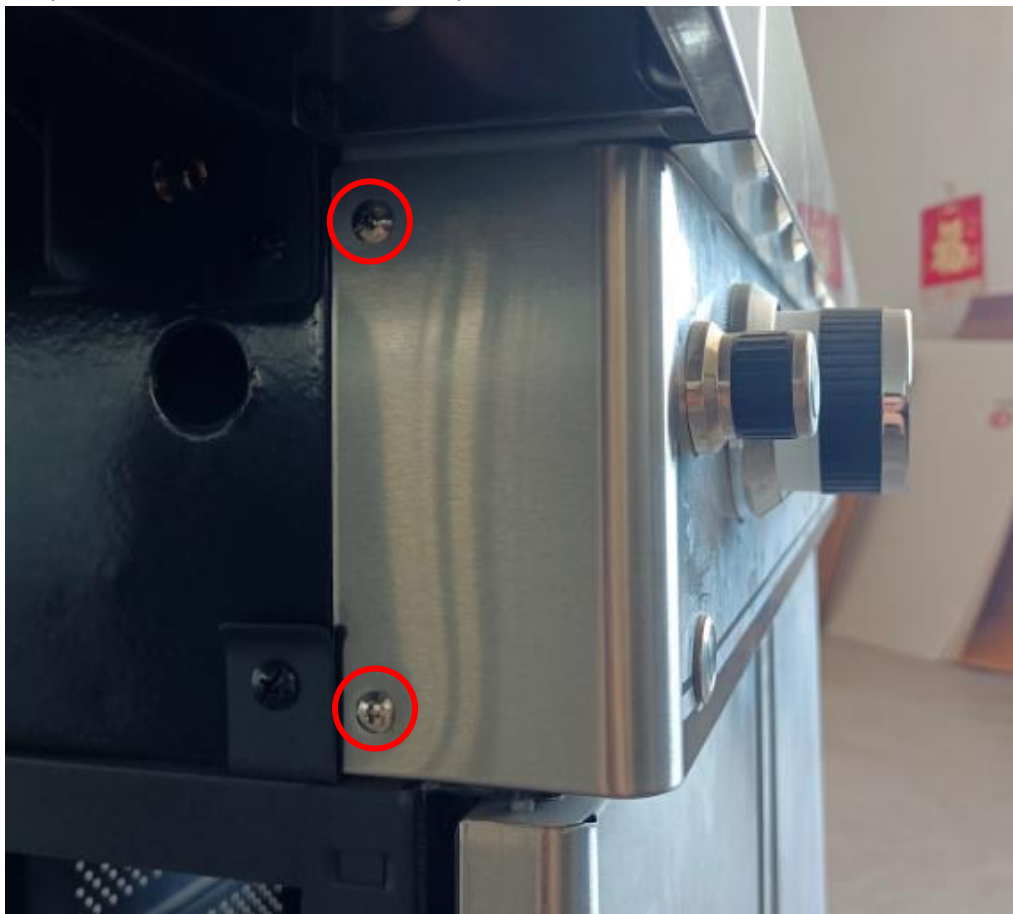




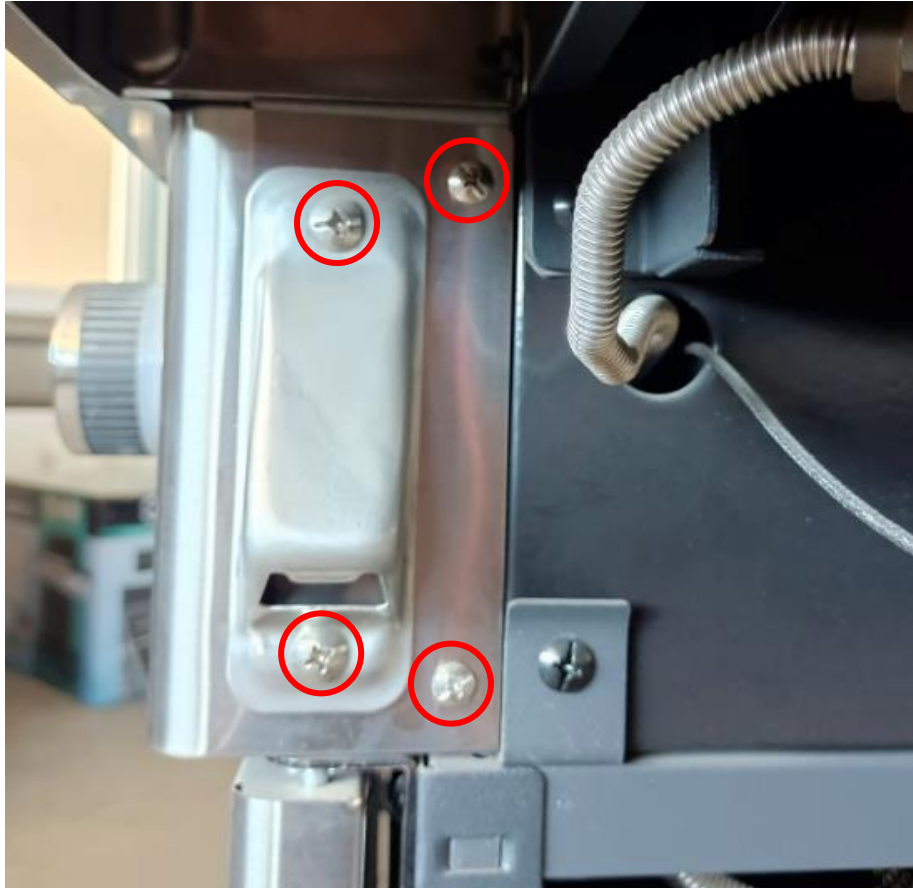
Step 5: Get the fat tray support bracket out as the picture shows.



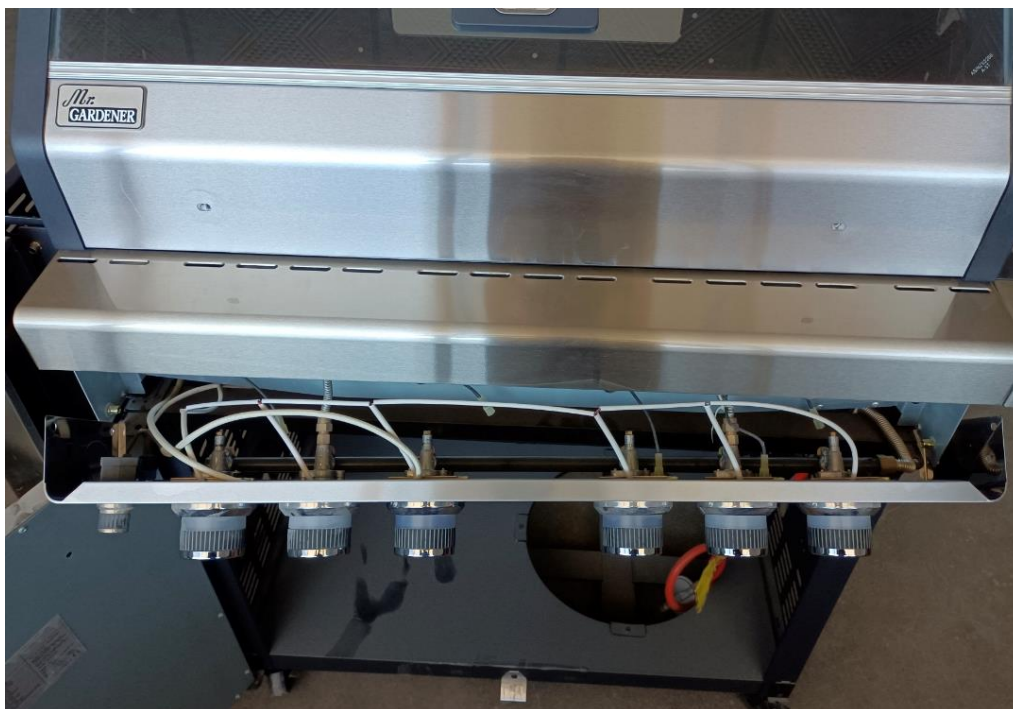
Step 6: Take out the bolts as the picture shows.



Step 7: Take out the bolts as the picture shows.



Step 8: Gently draw the fascia out as following image shows.



Step 9: Separate the rear burner ignition wire as the picture shows.



Step 10:

- A. Replace with a new rear burner ignition wire.
- B. Reverse steps above to install the parts back. Please pay attention when installing the fascia, since each injector on the manifold must aim at the burner inlets.

