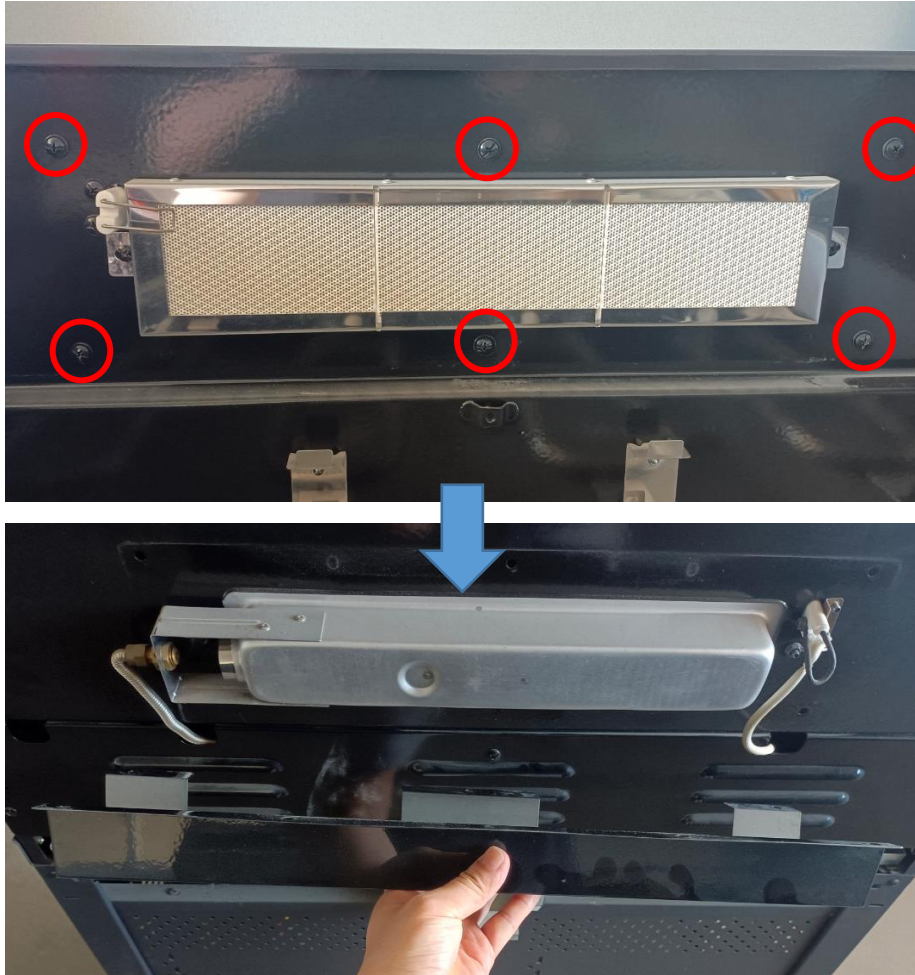
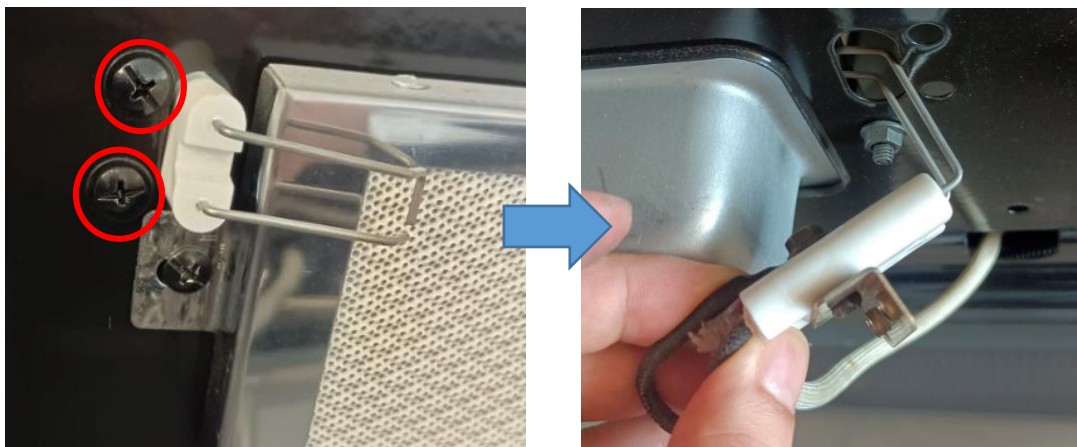


How to replace the rear burner

Step 1: Take out the bolts to get the rear burner cover out as the picture shows.

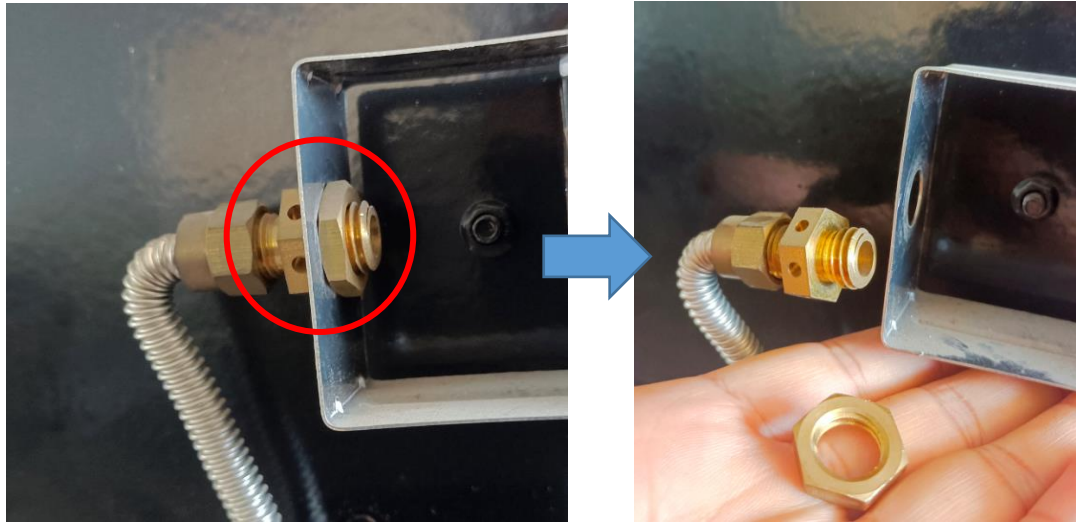


Step 2: Take out the bolts, then gently draw the rear burner ignition wire out.

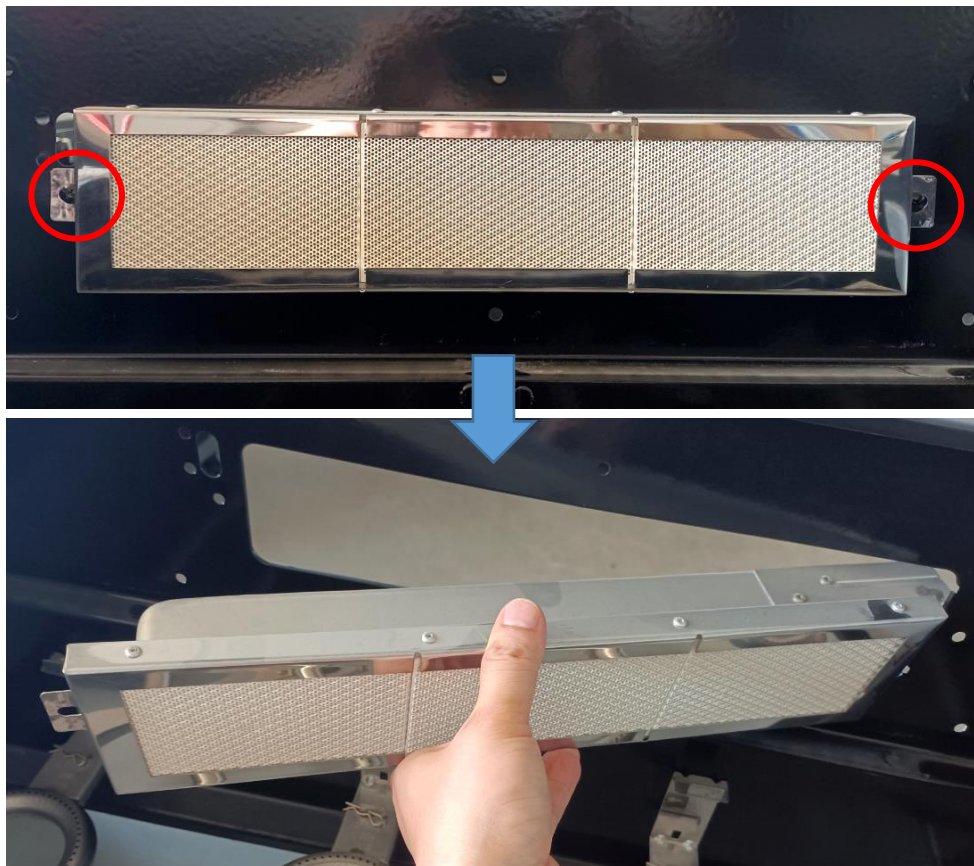




Step 3: Take out the nut as the picture shows.



Step 4: Take out the bolts as the picture shows. Then draw the rear burner out.



Step 5:

- A. Replace with a new rear burner.
- B. Reverse steps above to install the parts back.