



## How to replace the rear burner ignition wire

Step 1: Take out the nuts as the picture shows.



Step 2: Draw the rear burner reflector out.



Step 3: Take out the bolt as the picture shows.



Step 4: Gently draw the rear burner ignition wire out.

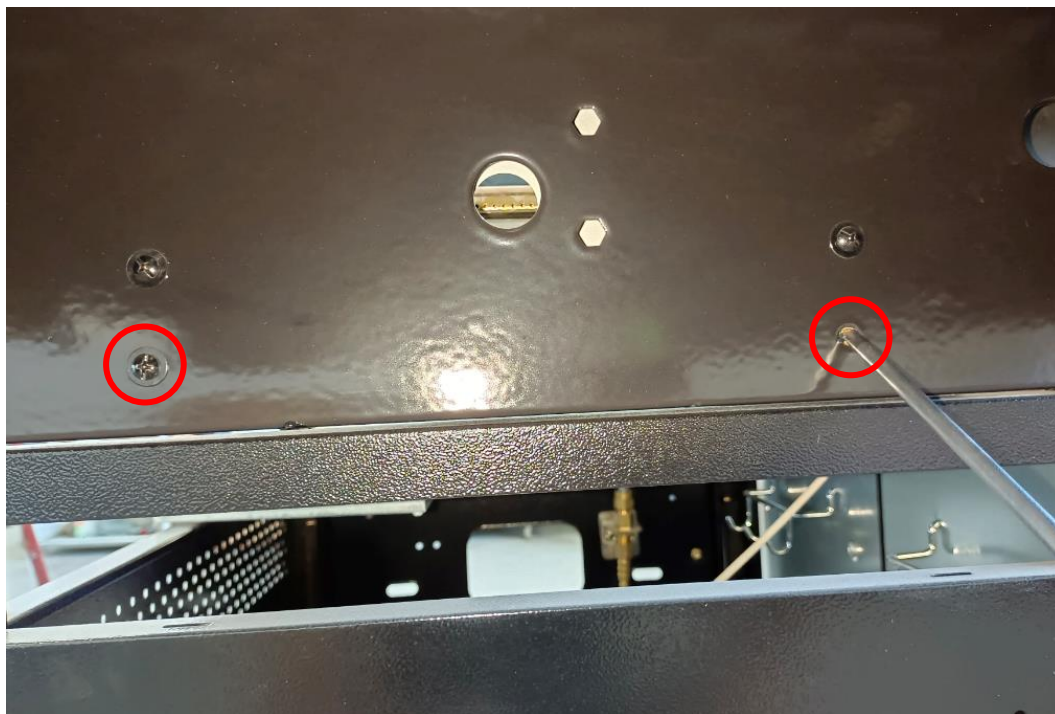




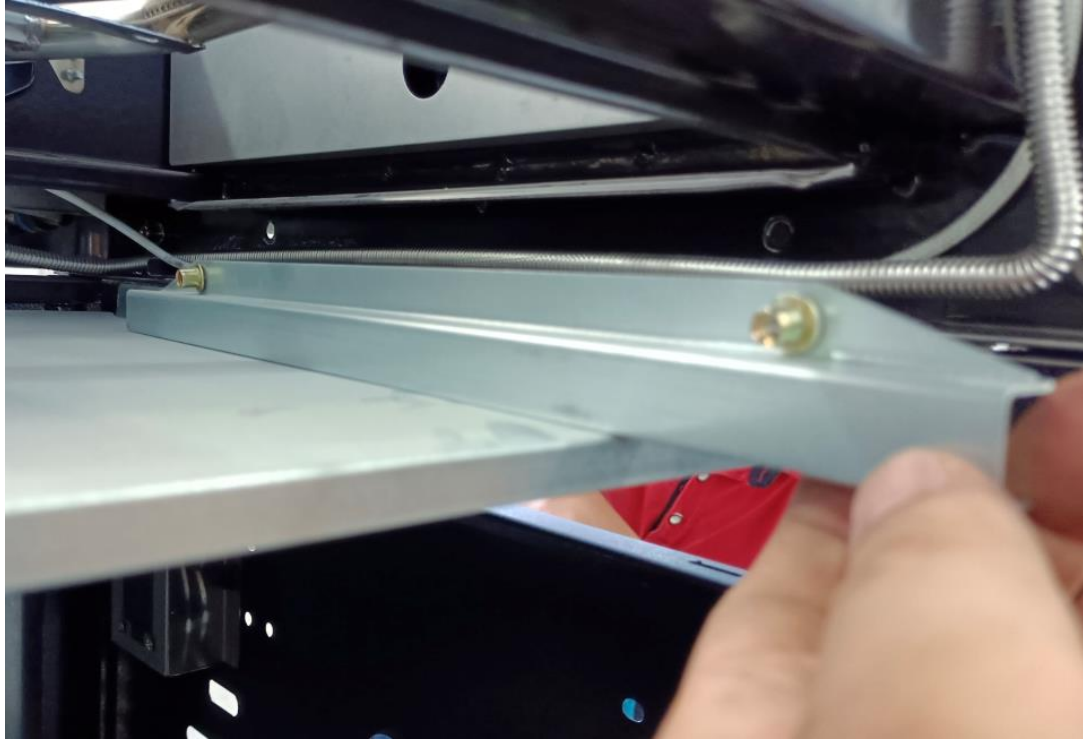
Step 5: Take out the bolts to get the BBQ frame back cover out.



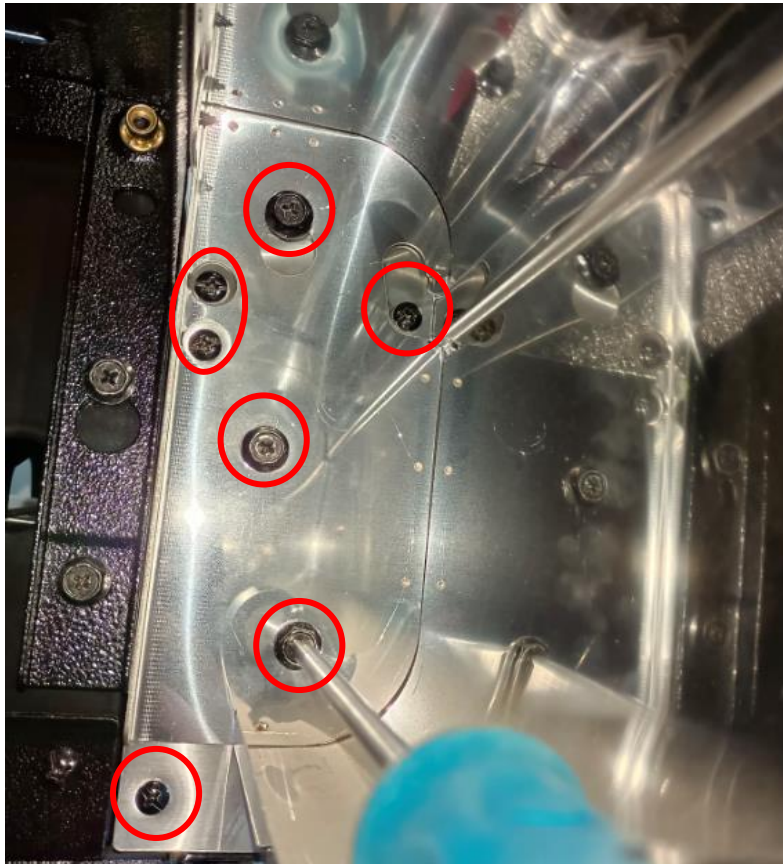
Step 6: Take out the bolts as the picture shows.



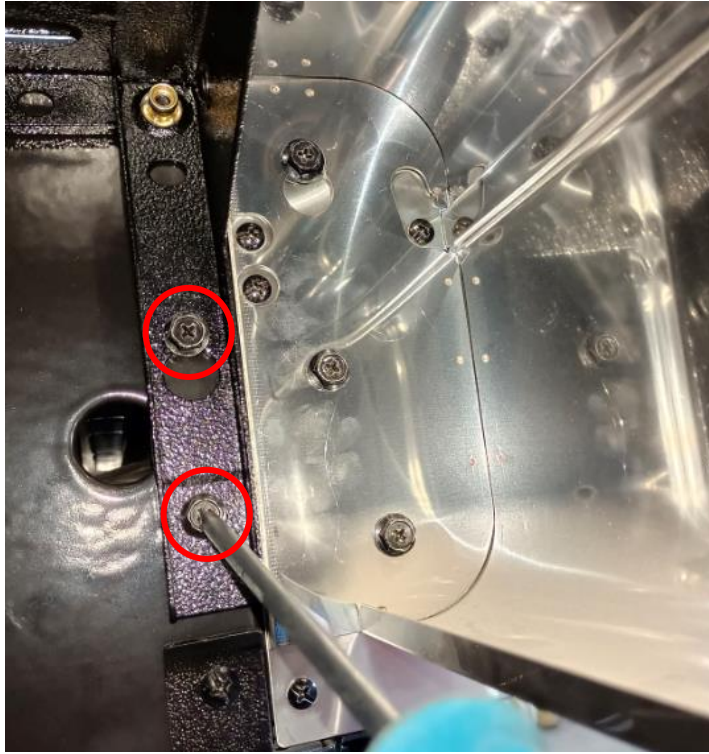
Step 7: Take out the fat tray support bracket.



Step 8: Take out the bolts as the picture shows.



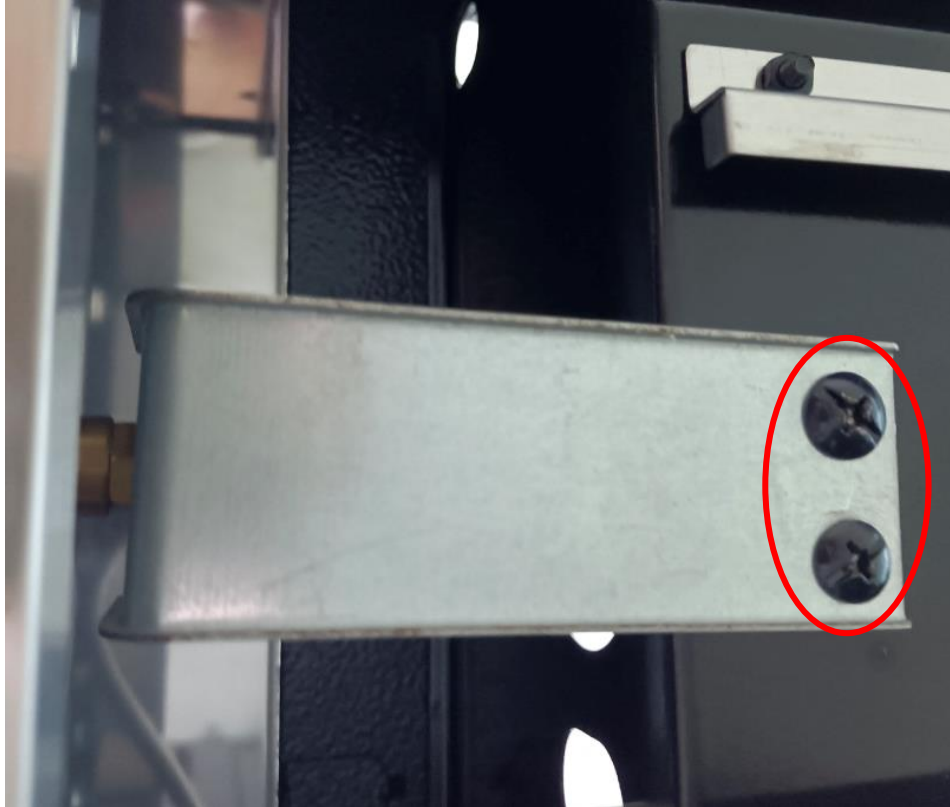
Step 9: Loosen the fixing screws 3mm as the picture shows.



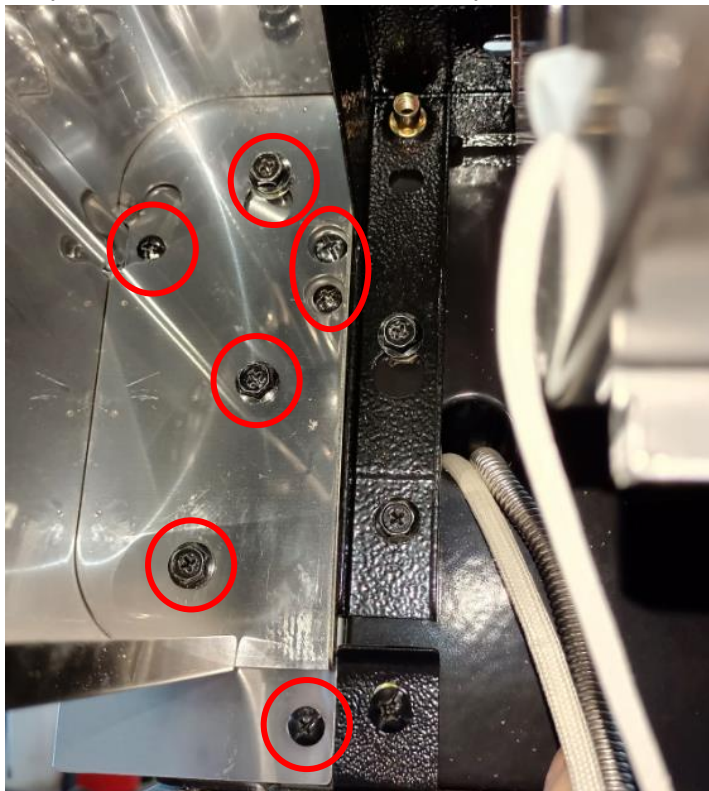
Step 10: Loosen the fixing screw 3mm as the picture shows.



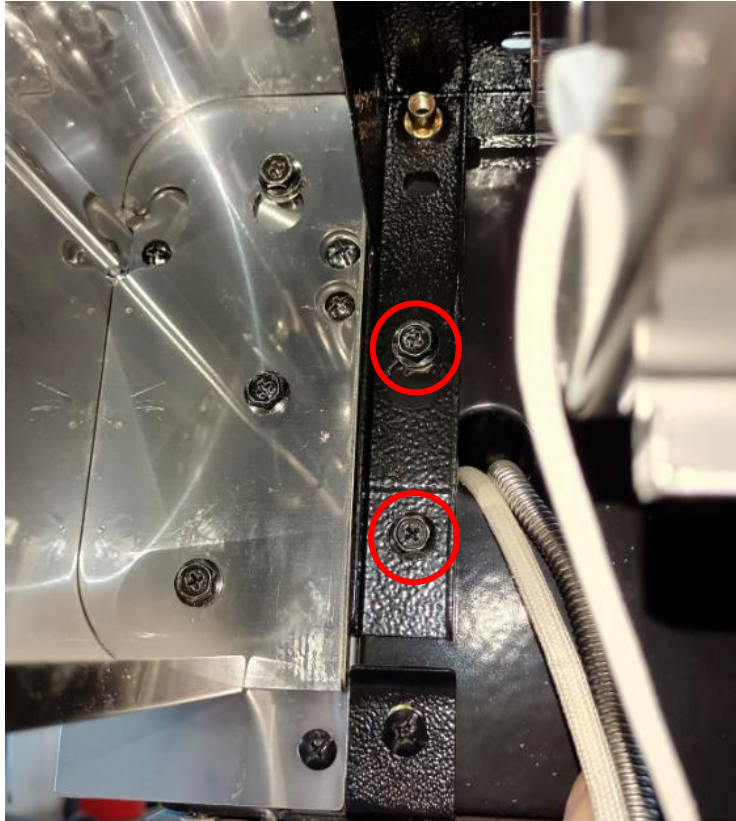
Step 11: Take out the bolts of the side burner injector holder.



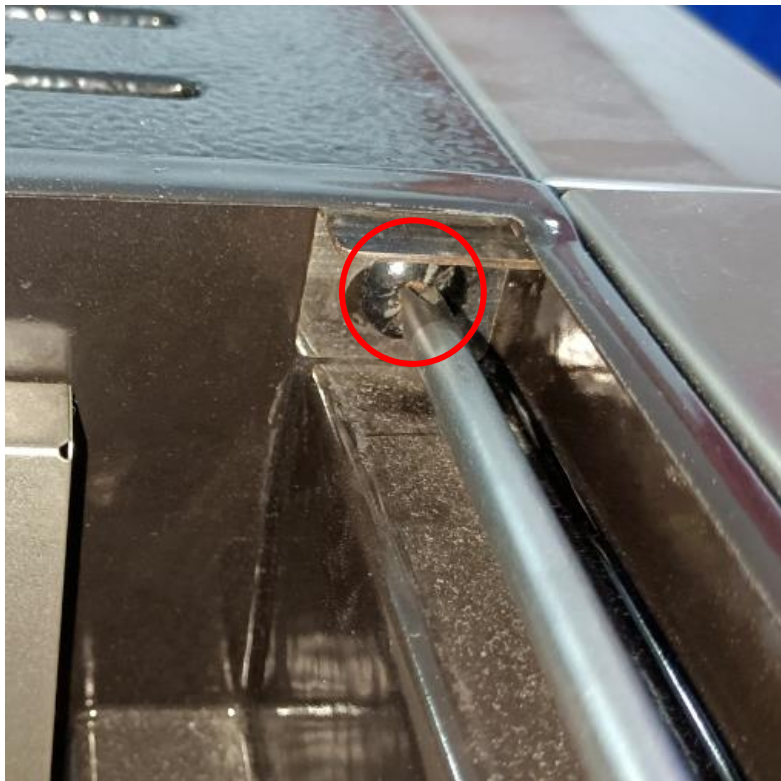
Step 12: Take out the bolts as the picture shows.



Step 13: Loosen the fixing screws 3mm as the picture shows.



Step 14: Loosen the fixing screw 3mm as the picture shows.





Step 15: Take out the bolt of the fascia as the picture shows.

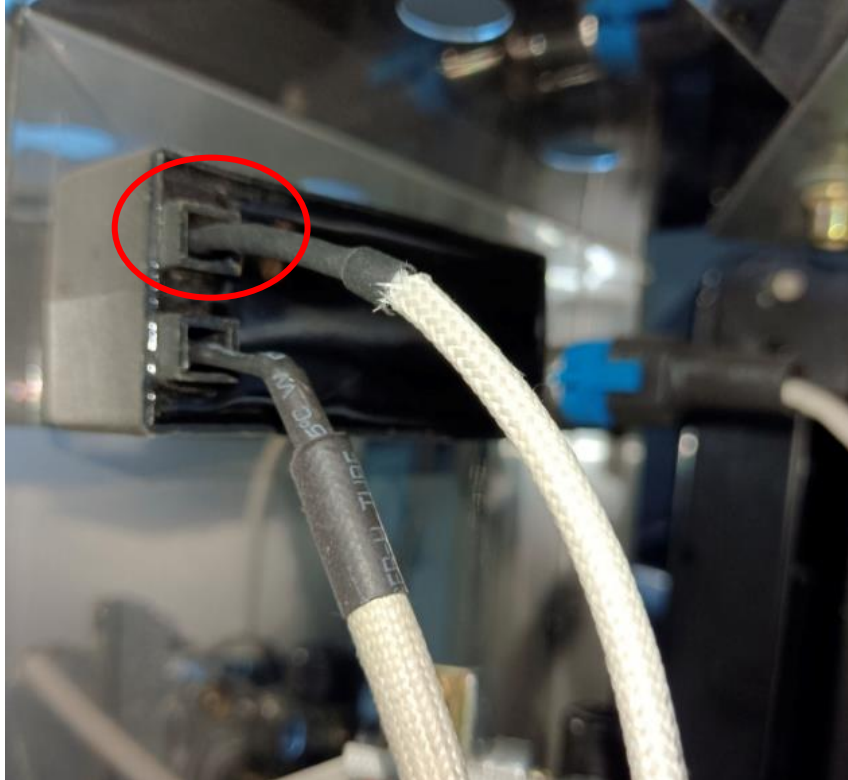


Step 16: Gently draw the fascia out as shown in the following image.





Step 17: Separate the rear burner ignition wire as the picture shows.



Step 18:

- A. Replace with a new rear burner ignition wire.
- B. Reverse steps above to install the parts back. Pay attention when installing the fascia, since each injector on the manifold must aim at the burner inlets.

