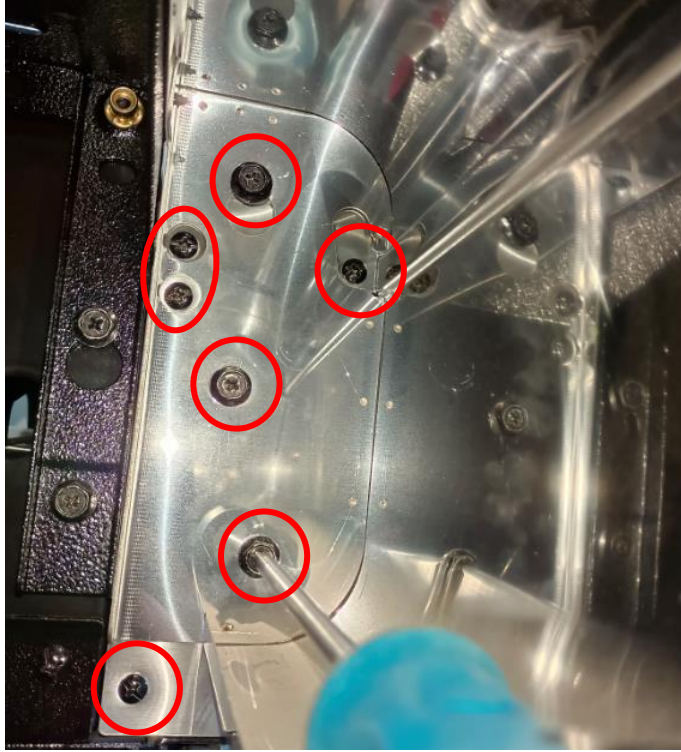
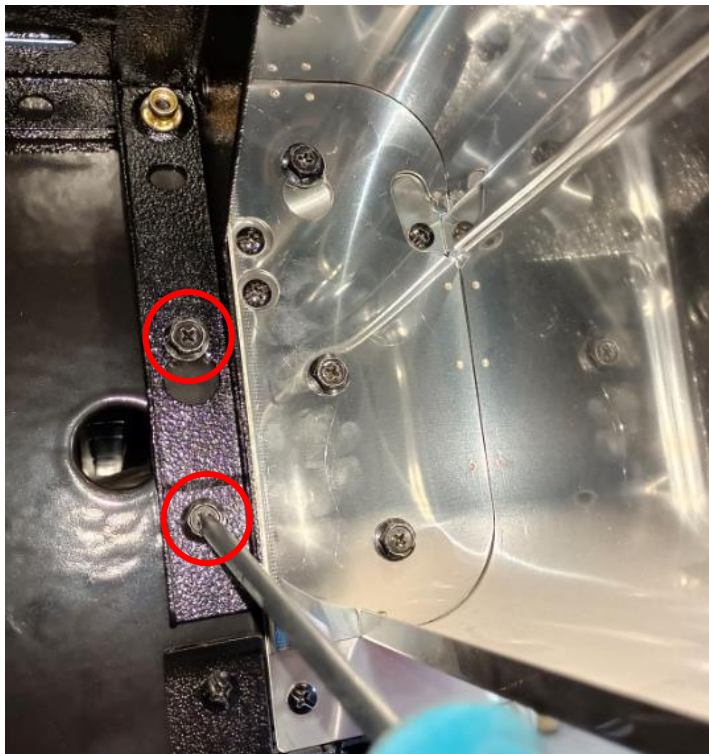


How to replace the fascia

Step 1: Take out the bolts as the picture shows.



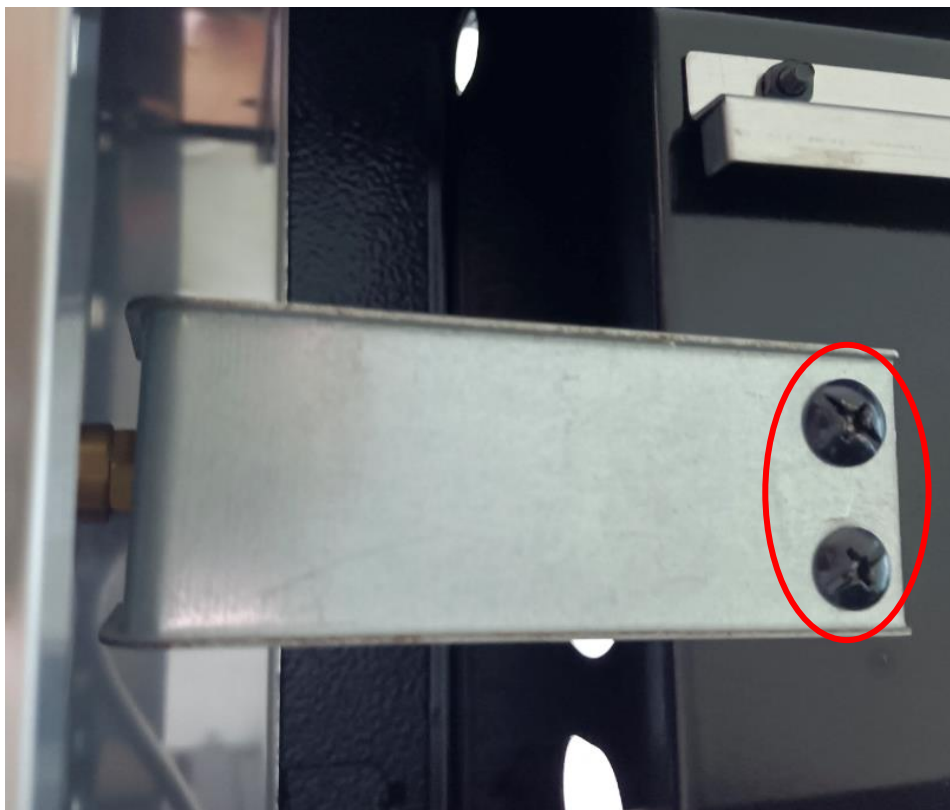
Step 2: Loosen the fixing screws 3mm as the picture shows.



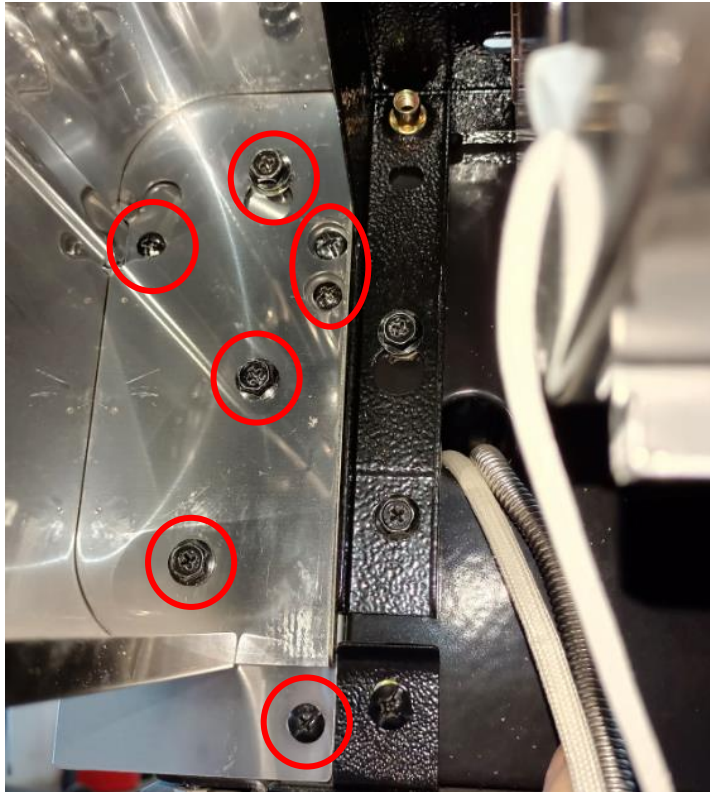
Step 3: Loosen the fixing screw 3mm as the picture shows.



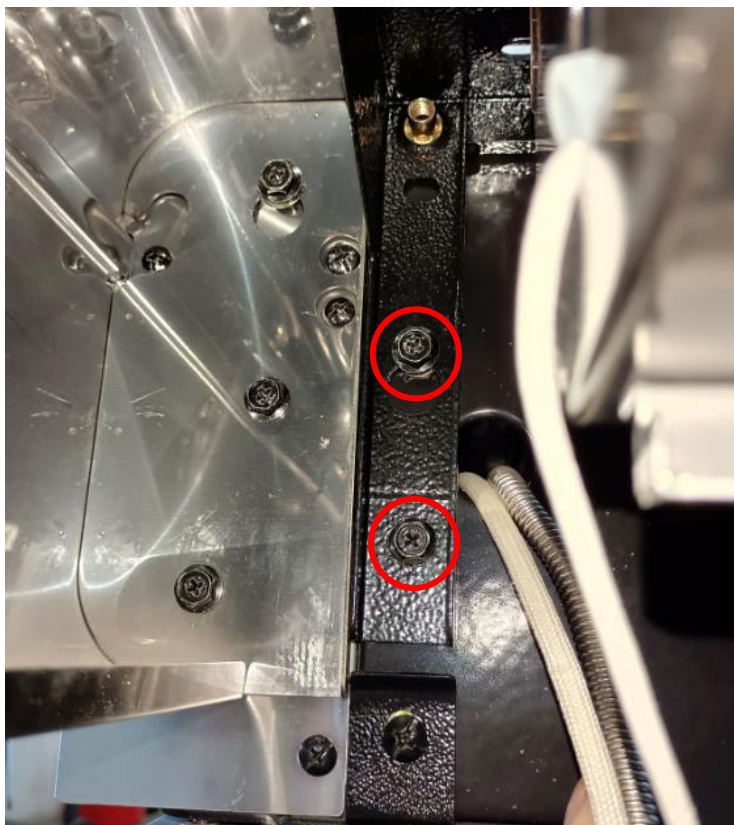
Step 4: Take out the bolts of the side burner injector holder.



Step 5: Take out the bolts as the picture shows..



Step 6: Loosen the fixing screws 3mm as the picture shows.



Step 7: Loosen the fixing screw 3mm as the picture shows.



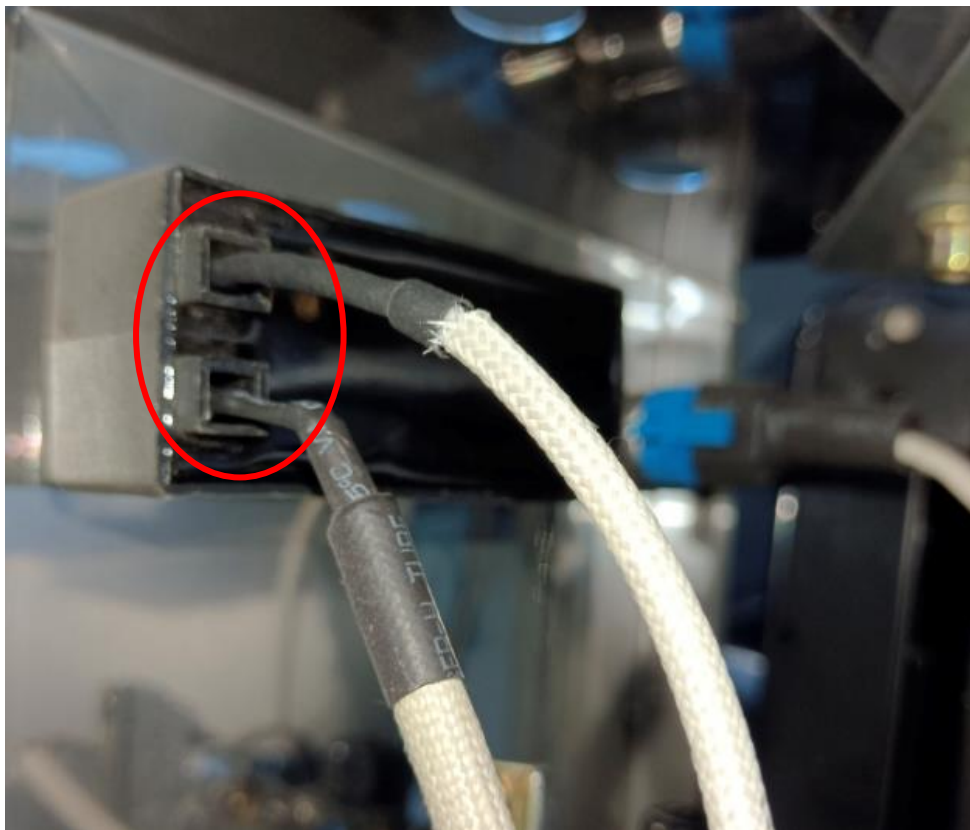
Step 8: Take out the bolt of the fascia as the picture shows.



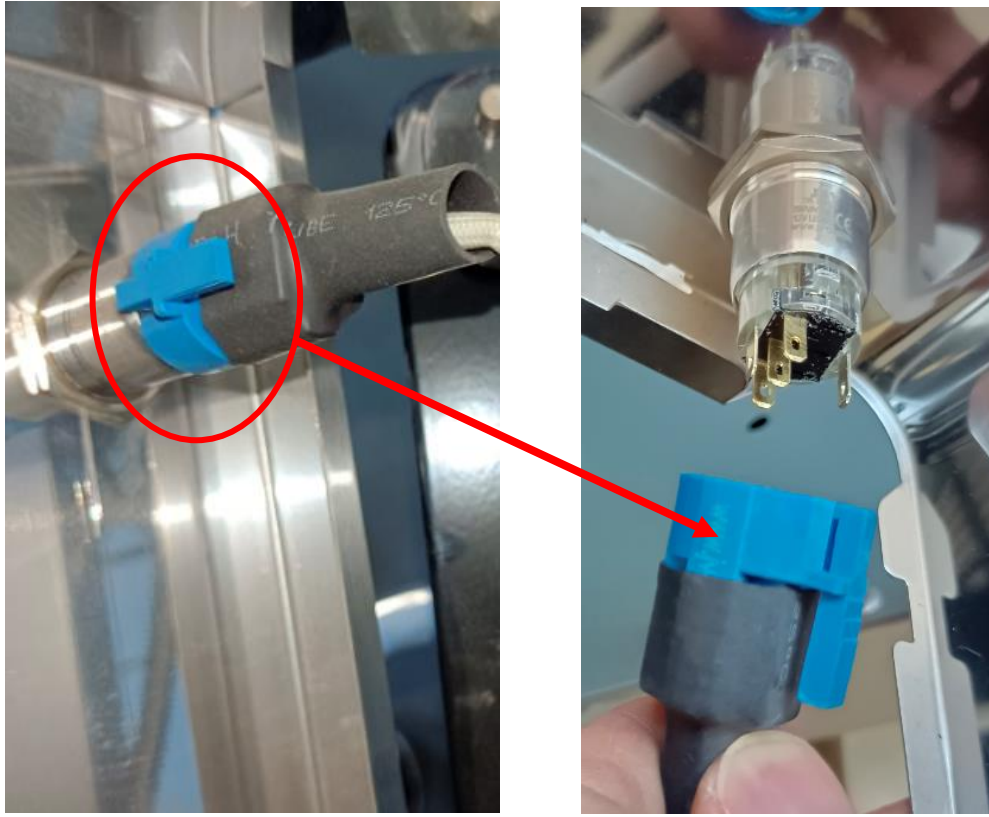
Step 9: Gently draw the fascia out as shown below.



Step 10: Separate the rear burner ignition wire and side burner ignition wire as the picture shows.



Step 11: Separate the knob light line as the picture shows.



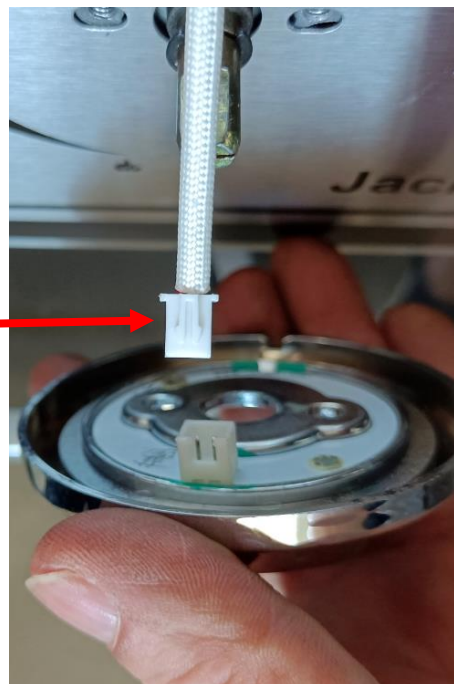
Step 12: Take out all the knobs.



Step 13: Remove all screws from the knob bezel.



Step 14: Take out all the knob light connection ends.



Step 15: Loosen the ignition box and knob light switch as the picture shows.



Step 16:

- A. Replace with a new fascia.
- B. Reverse steps above to install the parts back. Pay attention when installing the fascia, so each injector on the manifold aims at the burner inlets.

