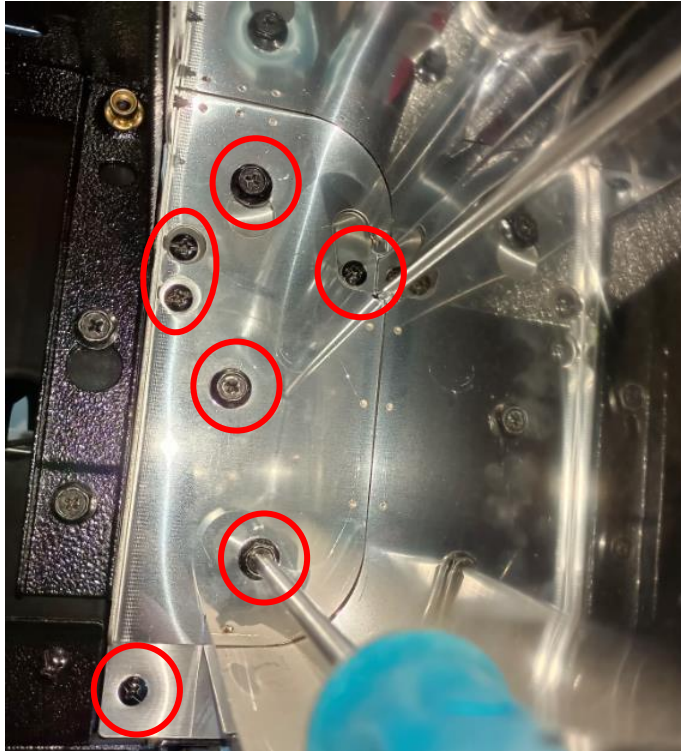
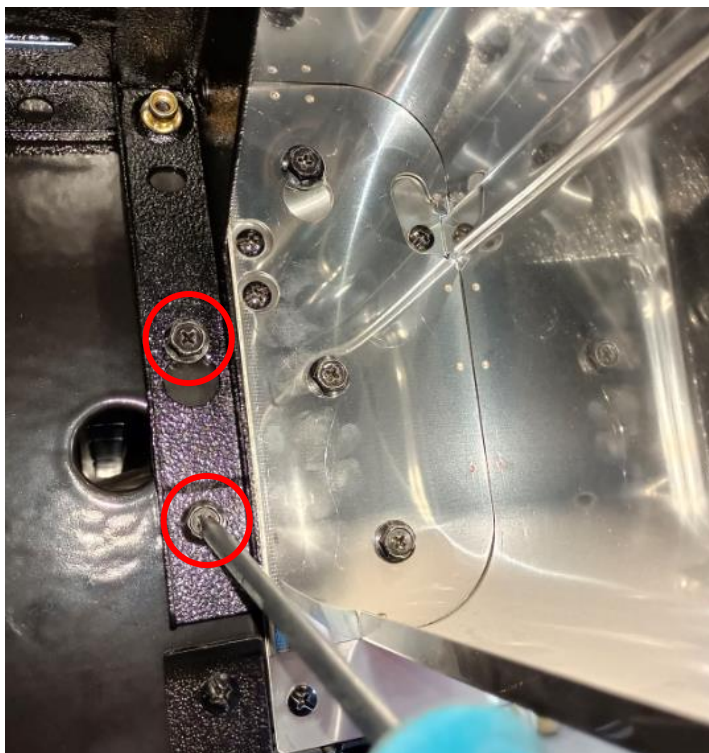


How to replace the knob light line

Step 1: Take out the bolts as the picture shows.



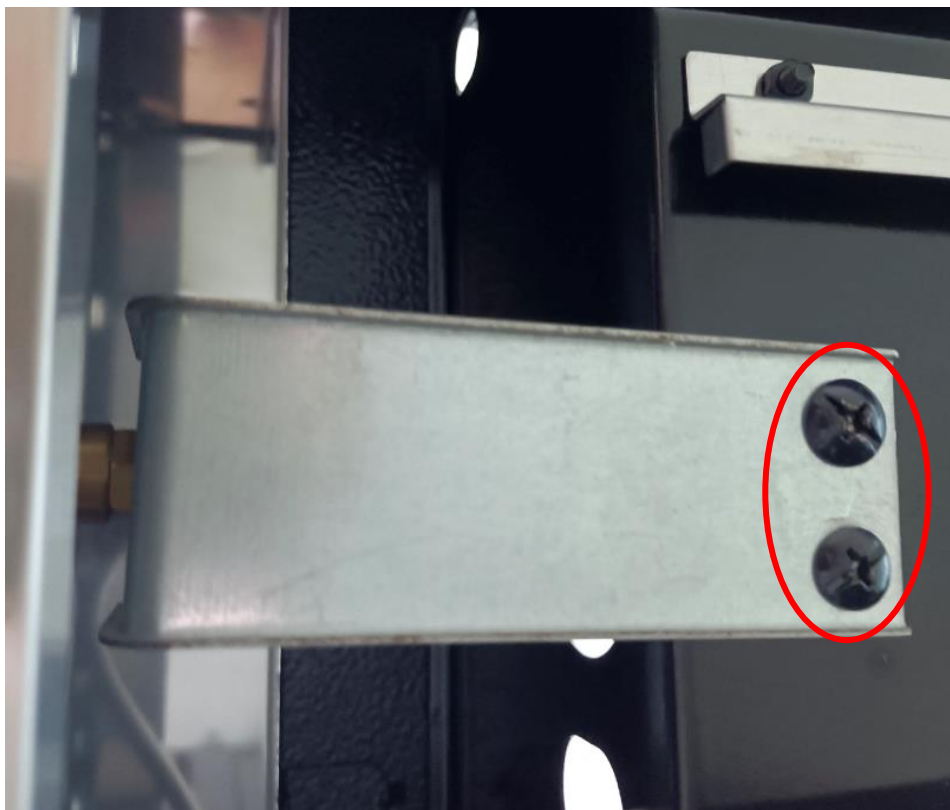
Step 2: Loosen the fixing screws 3mm as the picture shows.



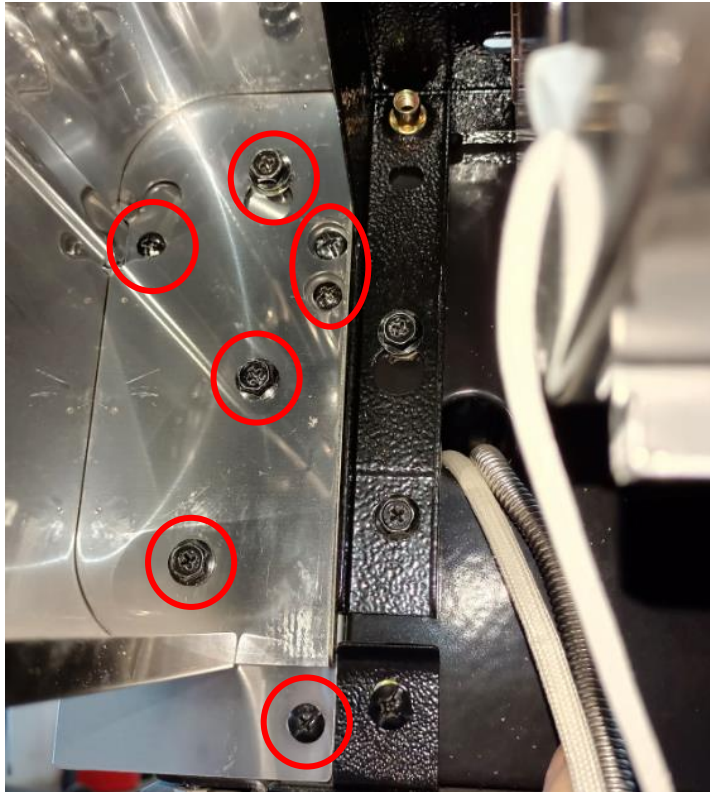
Step 3: Loosen the fixing screw 3mm as the picture shows.



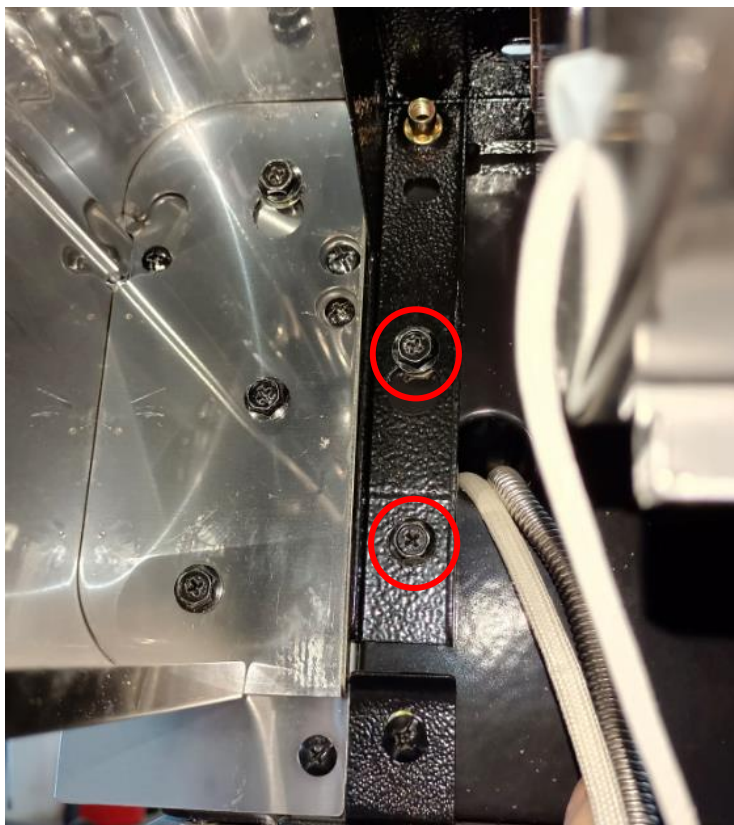
Step 4: Take out the bolts of the side burner injector holder.



Step 5: Take out the bolts as the picture shows.



Step 6: Loosen the fixing screws 3mm as the picture shows.



Step 7: Loosen the fixing screw 3mm as the picture shows.



Step 8: Take out the bolt of the fascia as the picture shows.





Step 9: Gently draw the fascia out as shown in the following image.



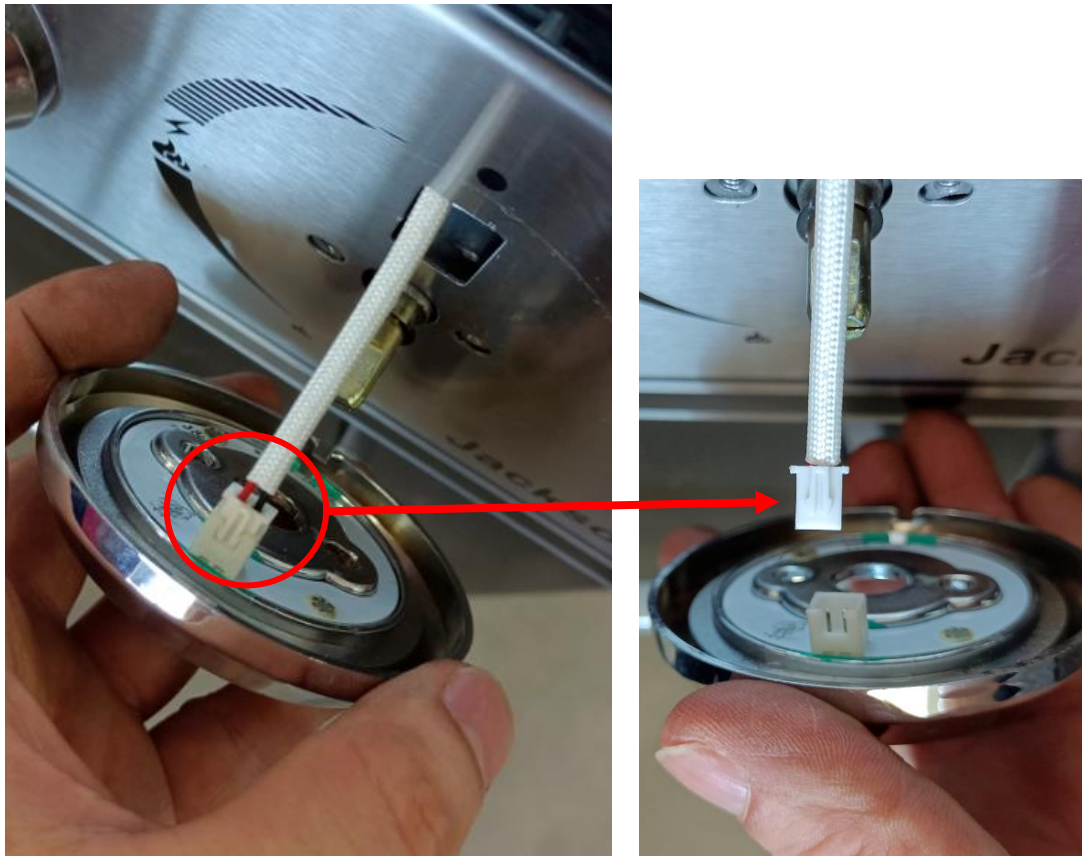
Step 10: Take out all the knobs.



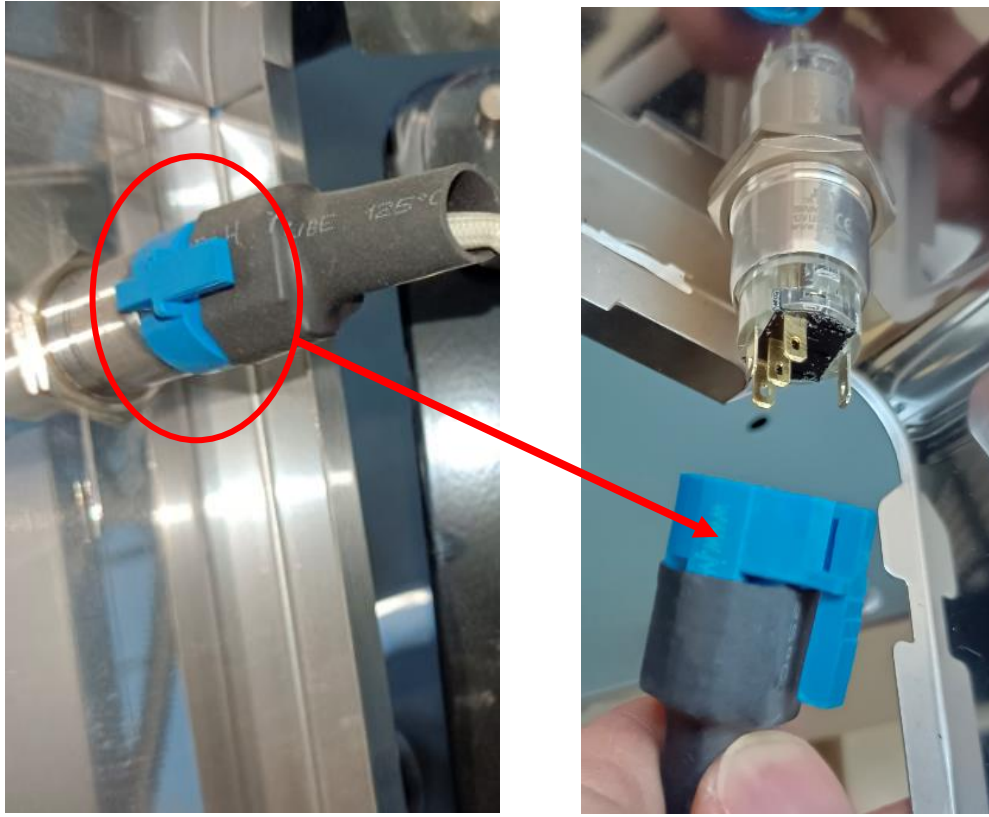
Step 11: Remove all screws from the knob bezel.



Step 12: Take out all the knob light connection end.



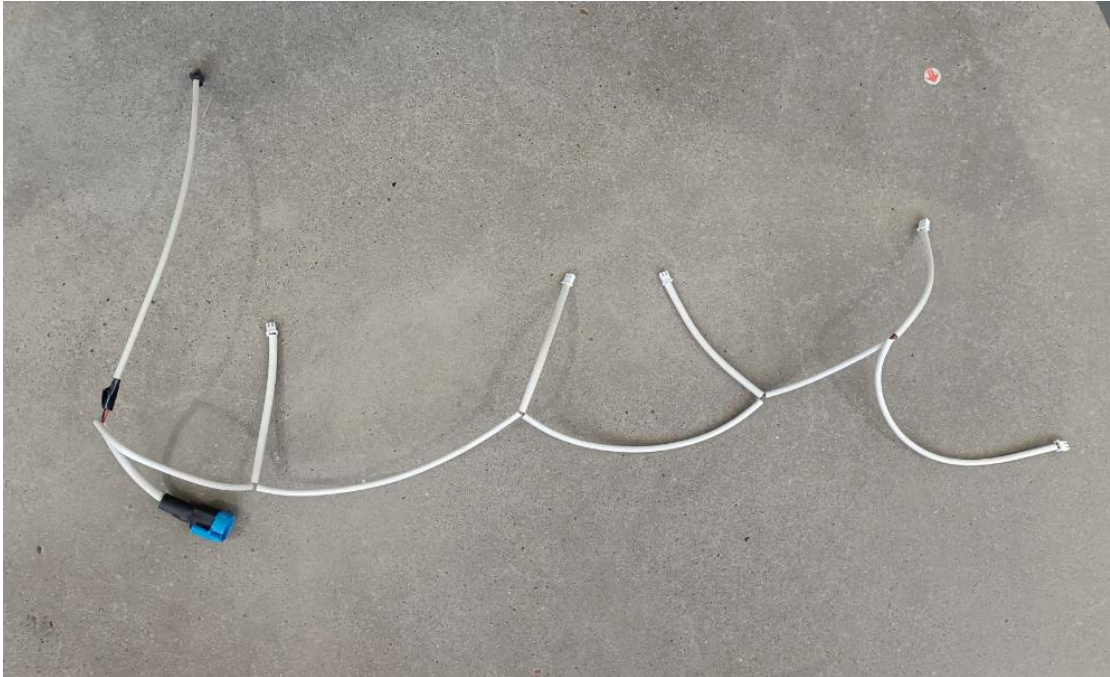
Step 13: Separate the knob light line as the picture shows.



Step 14: Separate the knob light line as the picture shows.



Step 15: Replace with a new knob light line.



Step 16: Reverse steps above to install the parts back. Pay attention when installing the fascia, since each injector on the manifold must aim at the burner inlets.

