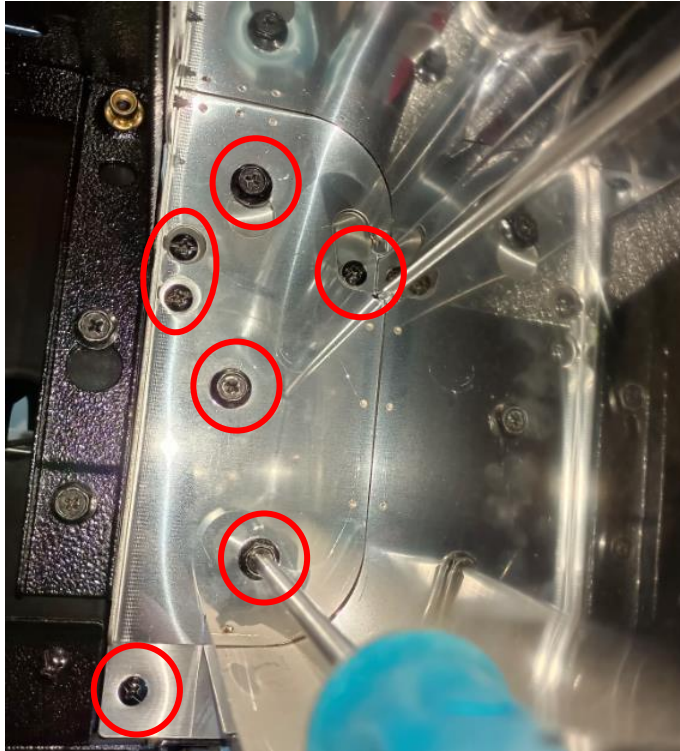
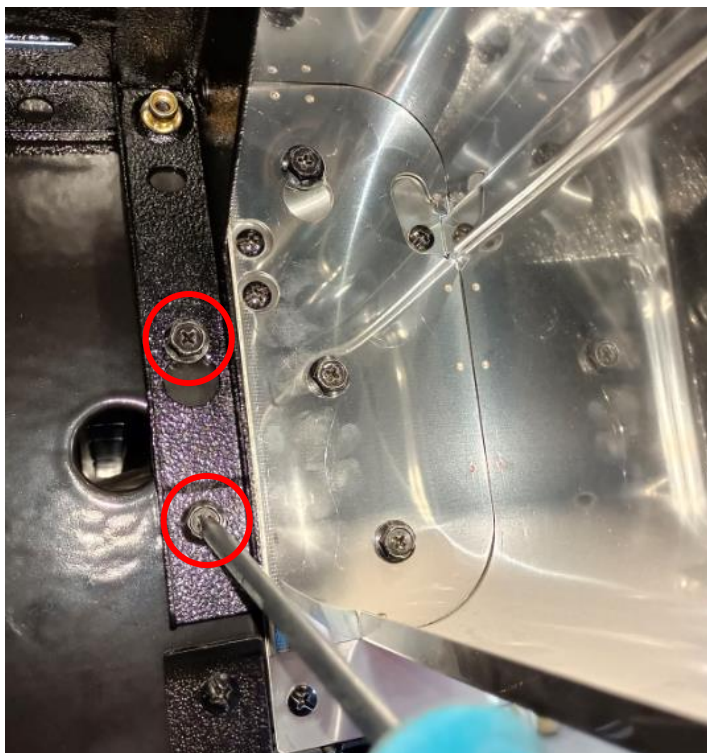


How to replace the manifold set

Step 1: Take out the bolts as the picture shows.



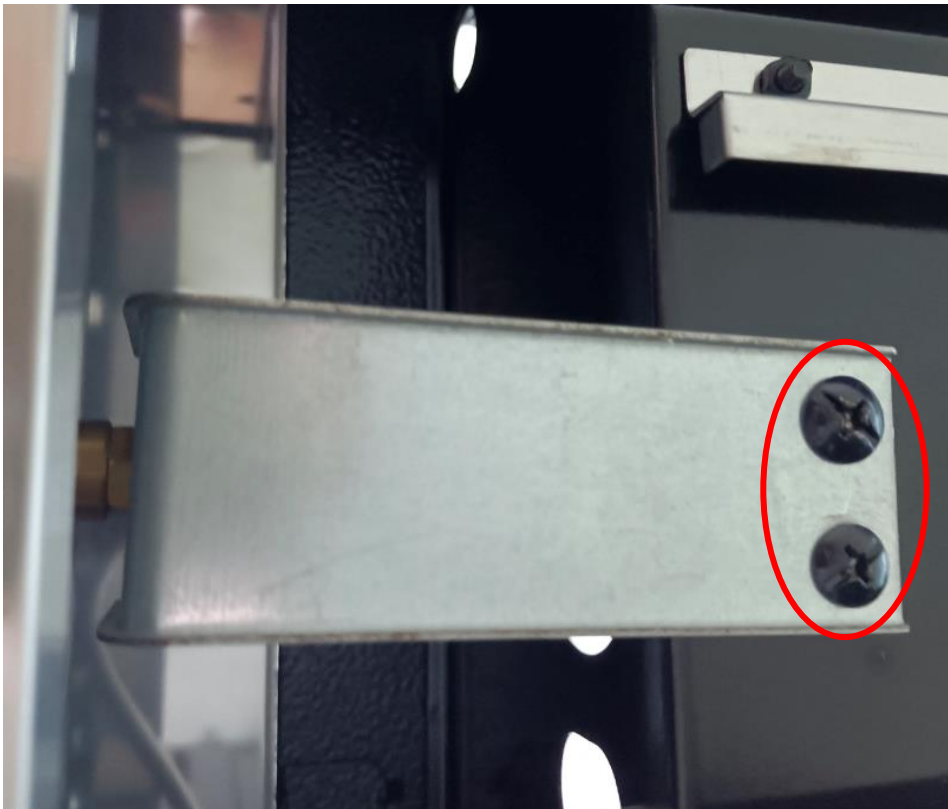
Step 2: Loosen the fixing screws 3mm as the picture shows.



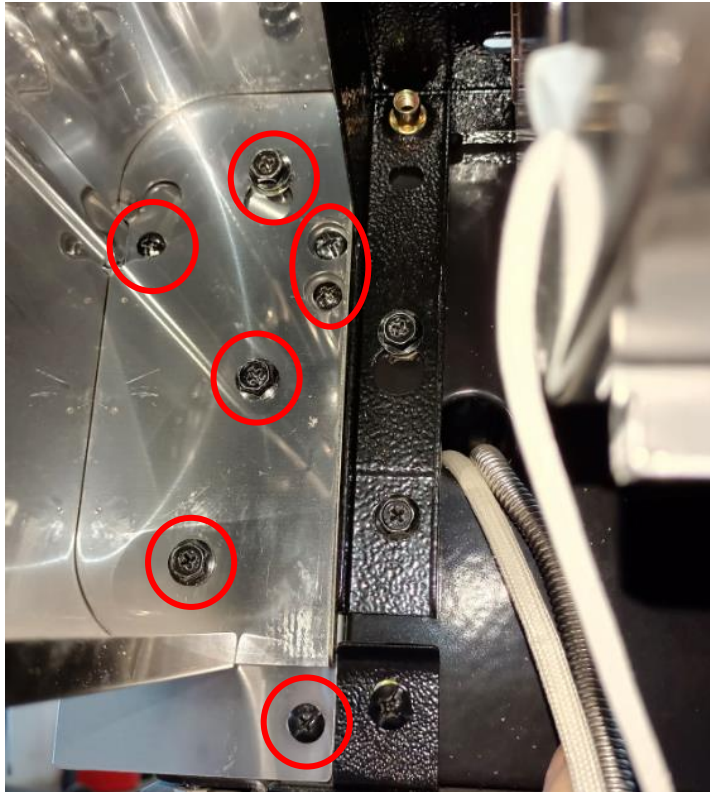
Step 3: Loosen the fixing screw 3mm as the picture shows.



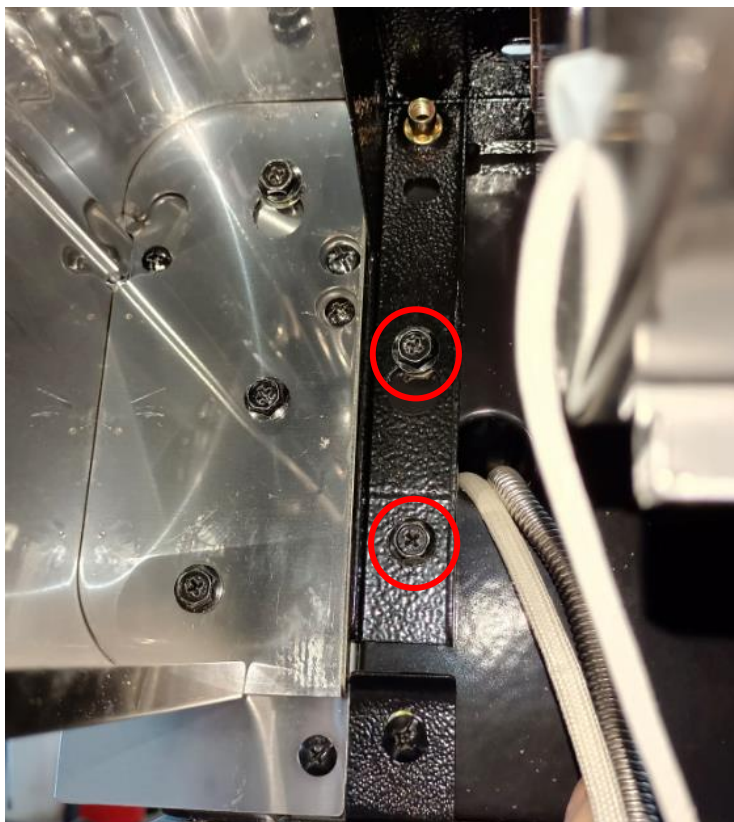
Step 4: Take out the bolts of the side burner injector holder.



Step 5: Take out the bolts as the picture shows.



Step 6: Loosen the fixing screws 3mm as the picture shows.



Step 7: Loosen the fixing screw 3mm as the picture shows.



Step 8: Take out the bolt of the fascia as the picture shows.



Step 9: Gently draw the fascia out as following image.



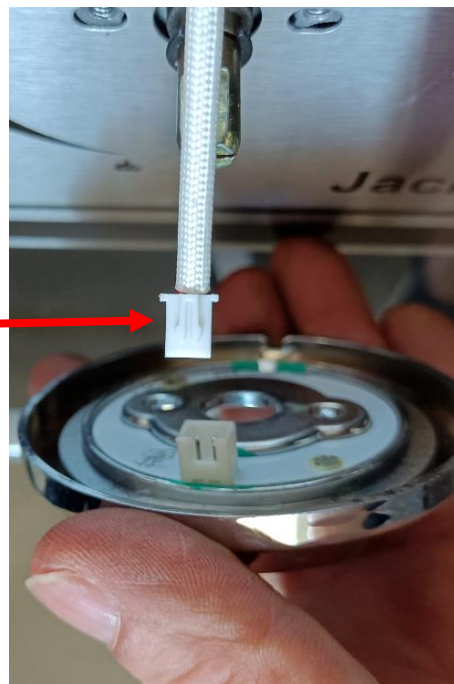
Step 10: Take out all the knobs.



Step 11: Remove all screws from the knob bezel.



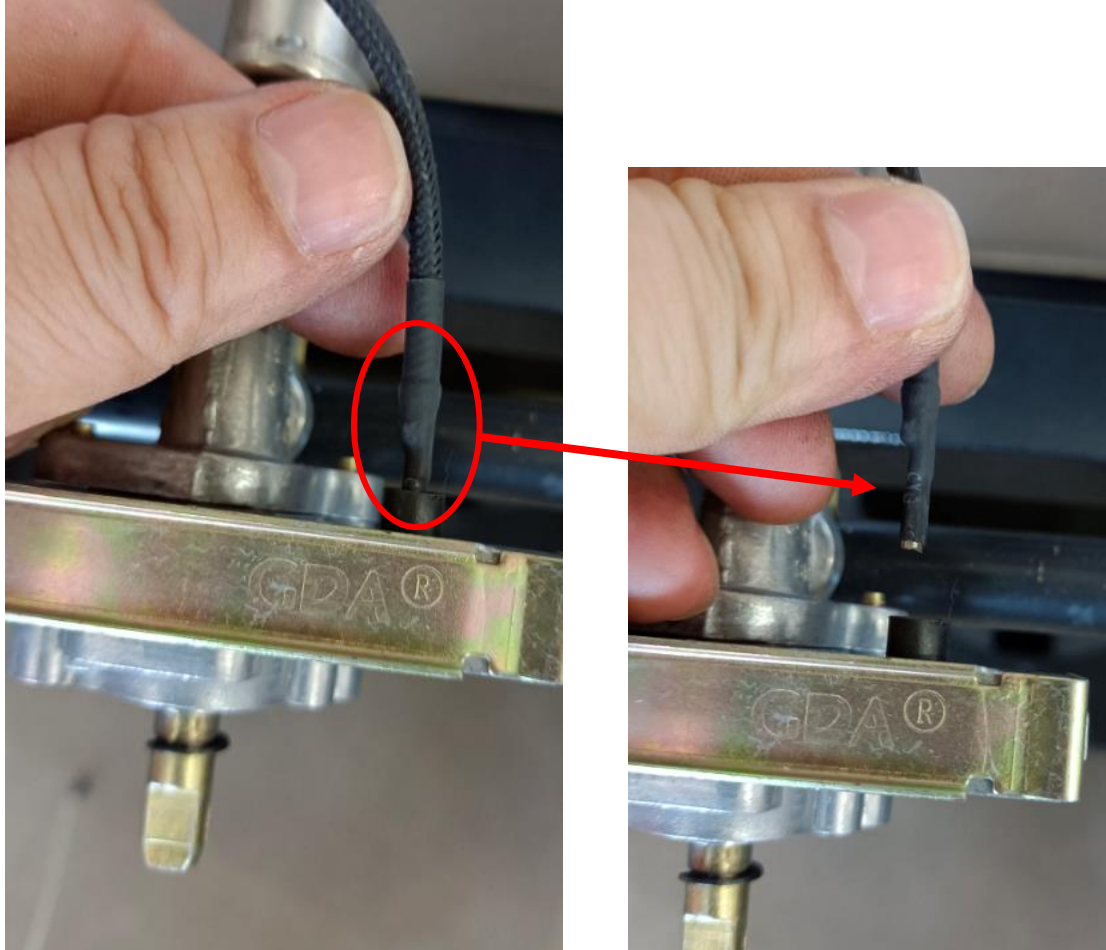
Step 12: Take out all the knob light connection end.



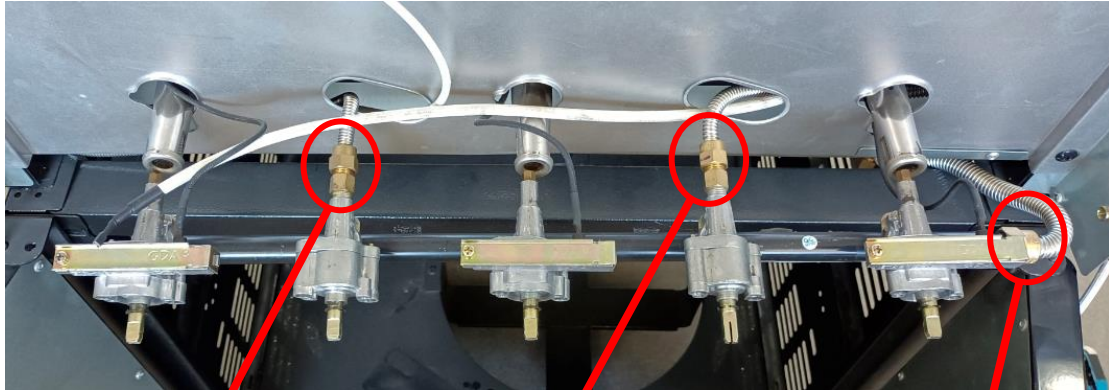
Step 13: Gently draw the fascia out as the following image shows.



Step 14: Separate the ignition wire as following image shows.



Step 15: Remove the side burner flexible pipe, rear burner flexible pipe and the regulator as shown on image.



Step 16:

- A. Replace with a new manifold and conduct a leak test.
- B. Reverse steps above to install the parts back. Pay attention when installing the fascia, since each injector on the manifold must aim at the burner inlets.

