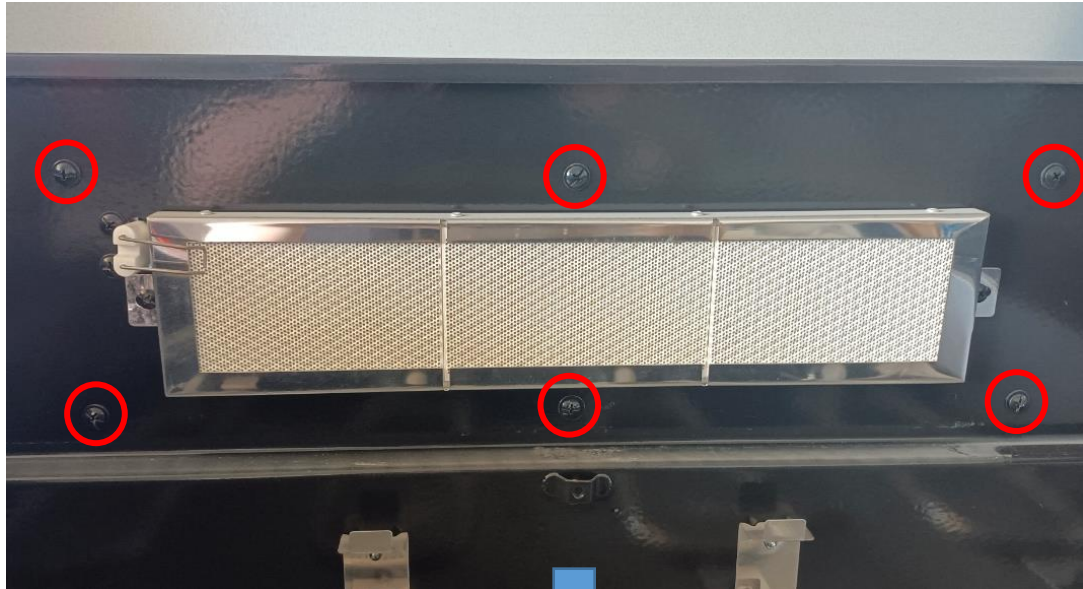
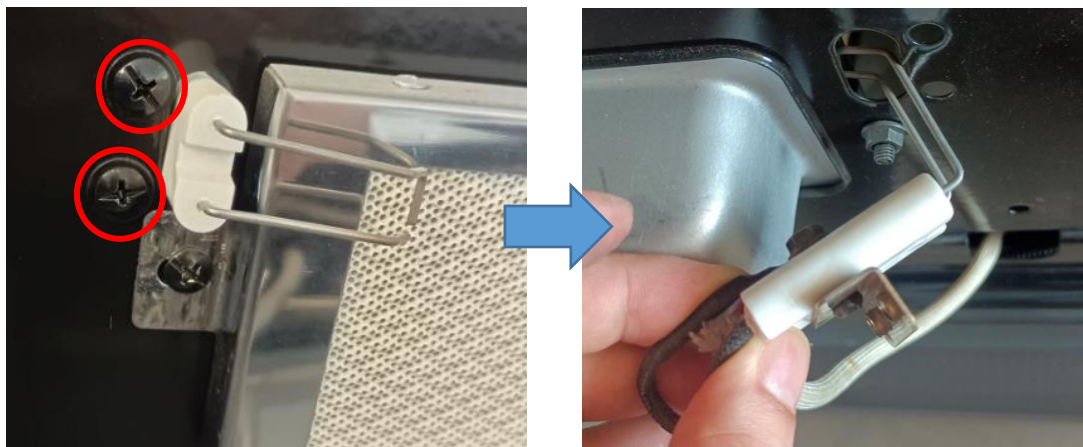


How to replace the rear burner (ceramic plate)

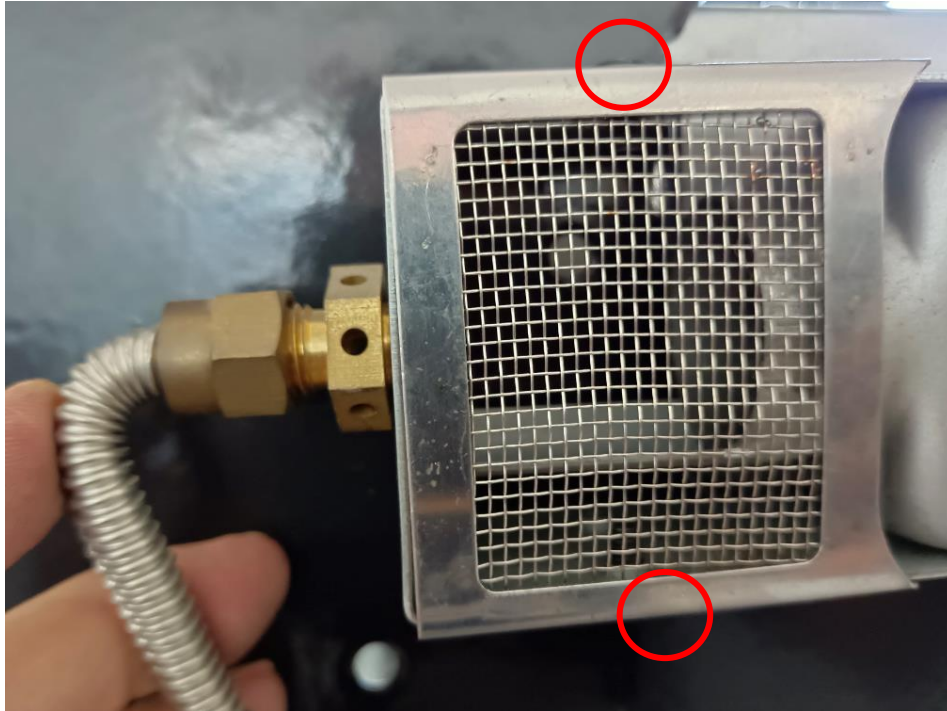
Step 1: Take out the bolts to get the rear burner cover out as the picture shows.



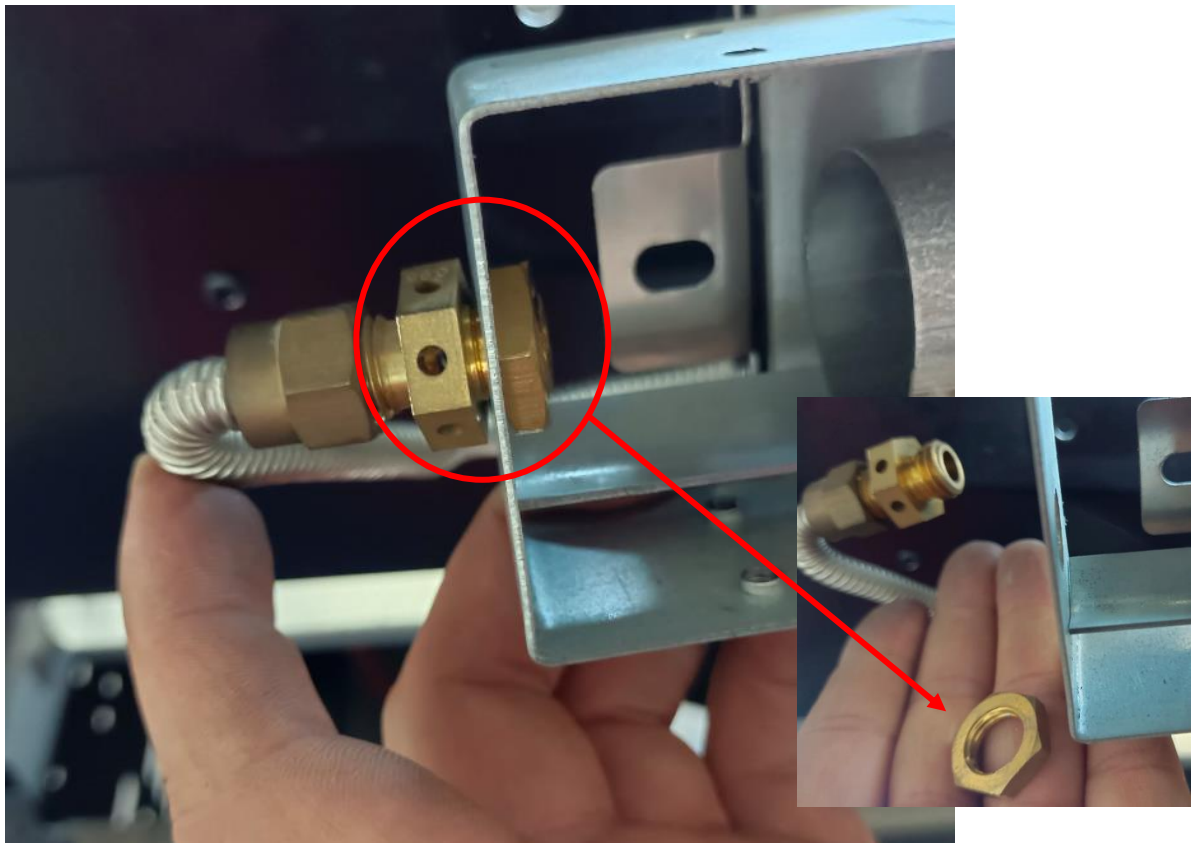
Step 2: Take out the bolts, then gently draw the rear burner ignition wire out.



Step 3: Take out the bolts of both side insect mesh.

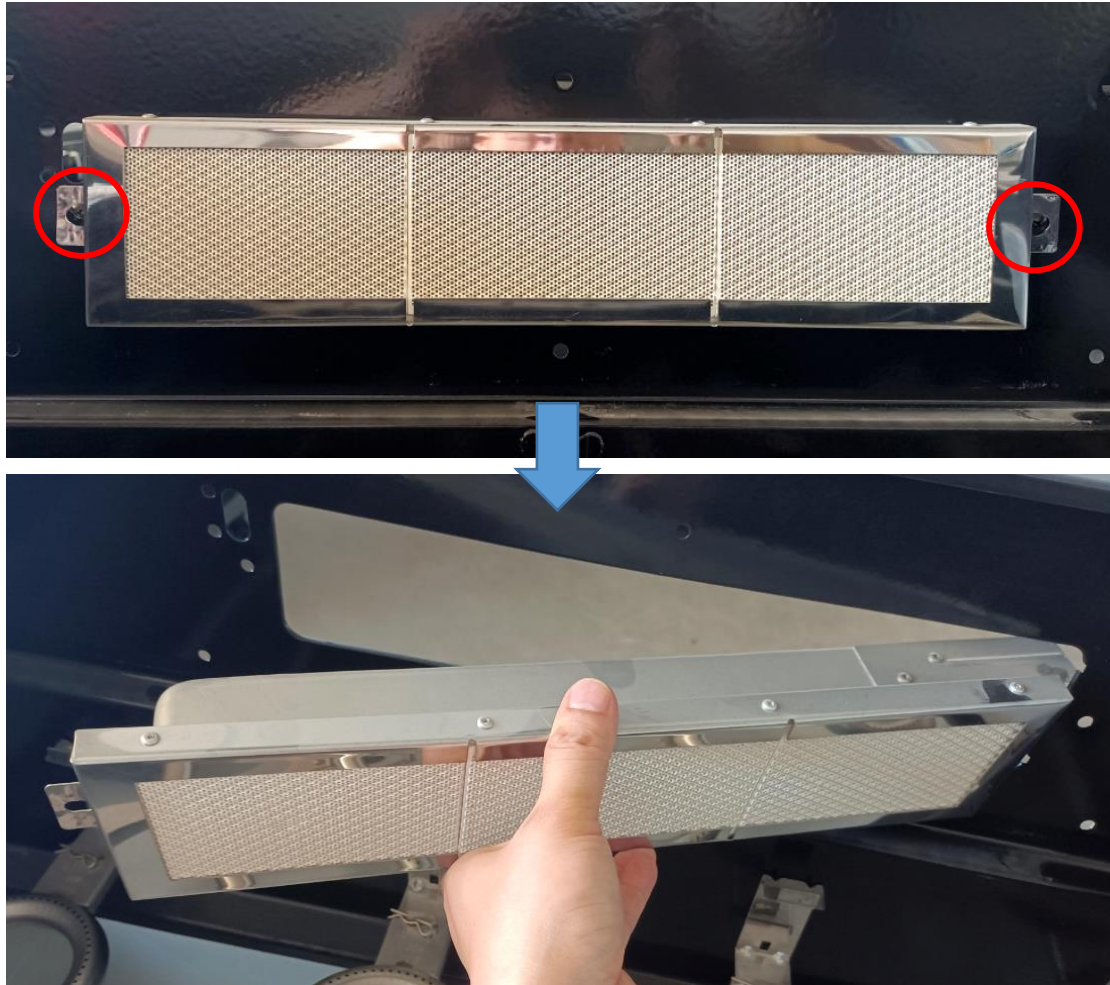


Step 4: Take out the nut as the picture shows.





Step 5: Take out the bolts as the picture shows on. Then draw the rear burner out.



Step 6:

- A. Replace with a new rear burner.
- B. Reverse steps above to install the parts back.