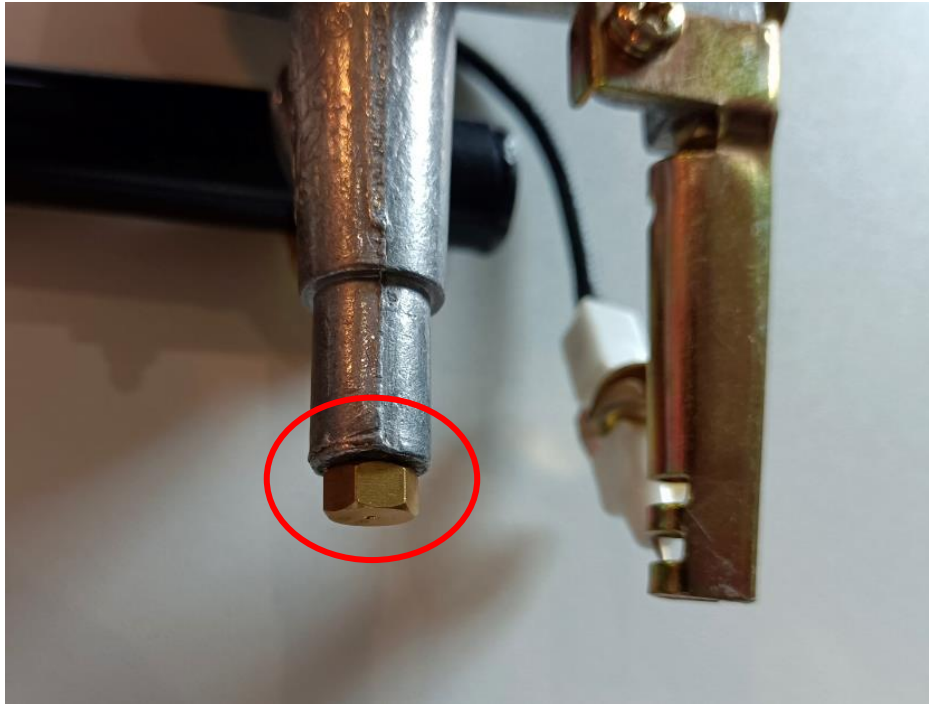


How to replace injector on the valve

ATTN: if you need to replace the injector of the gas valve on your BBQ, please be sure to hire the local registered plumber to do it to guarantee safety.

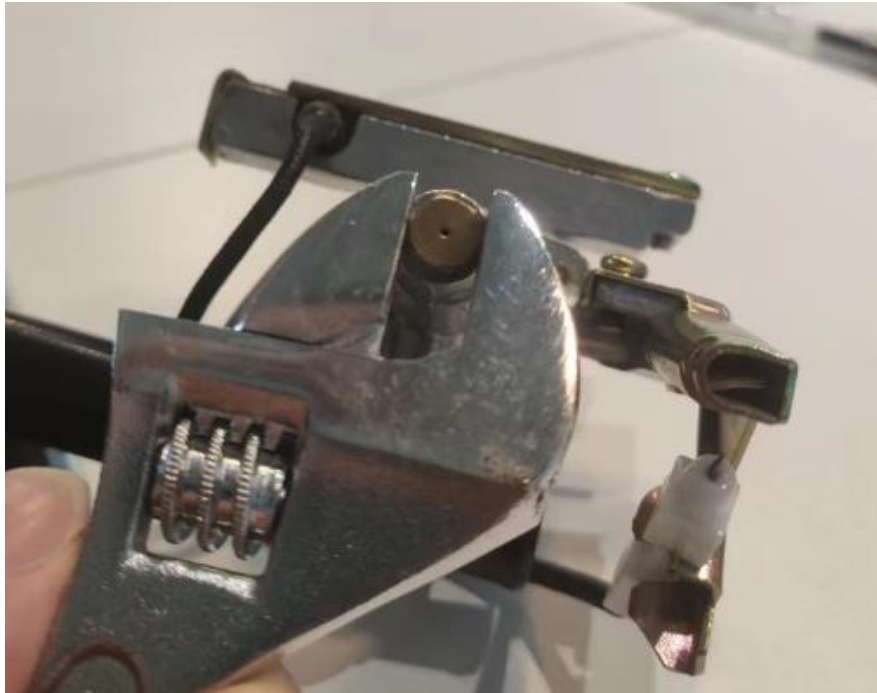
Step 1: Find the gas valve injector that needs to be replaced.



Step 2: Heat the injector with a lighter to soften the injector sealant.



Step 3: After heating for a while, use a spanner to take the injector out slowly.



Step 4: Replace with a new injector, but when assembling the new injector, please make sure to use the sealant to prevent gas leakage.

