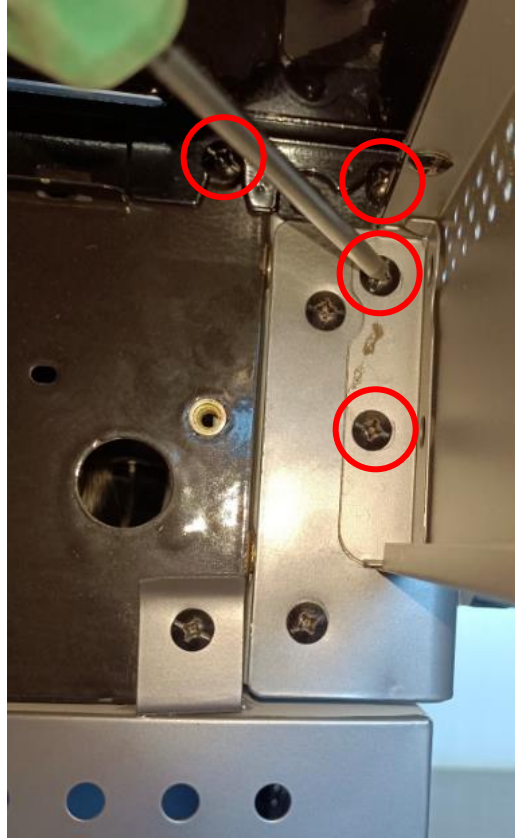


How to replace the manifold set

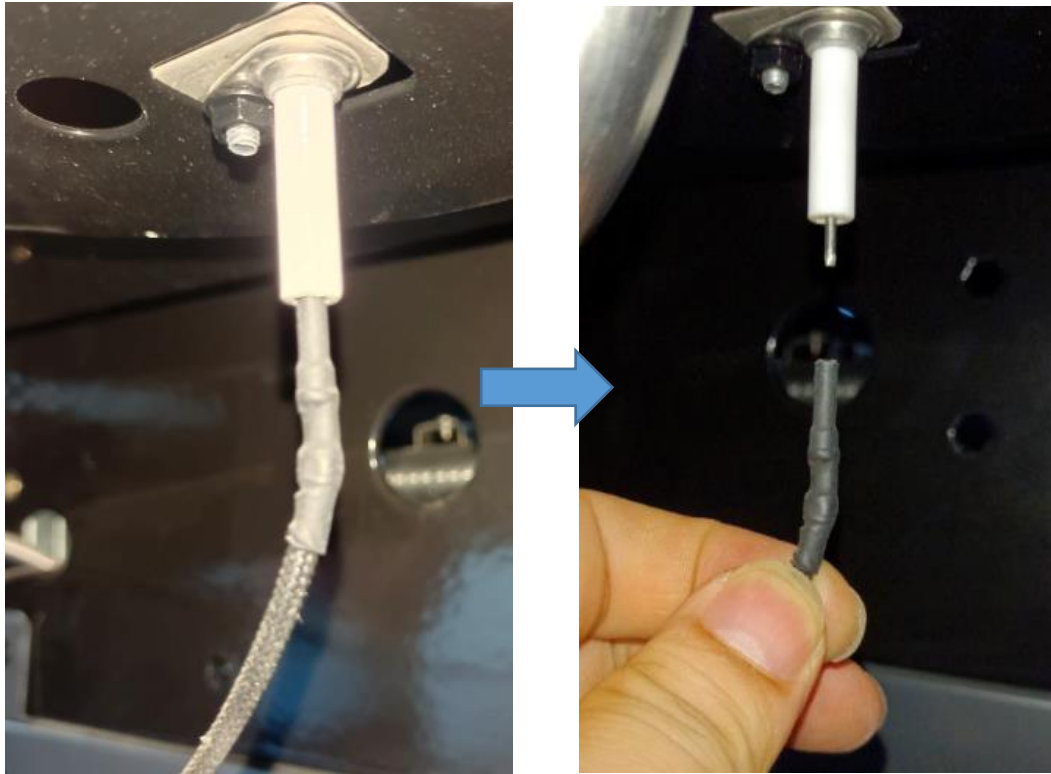
Step 1: Take out the bolts as the picture shows.



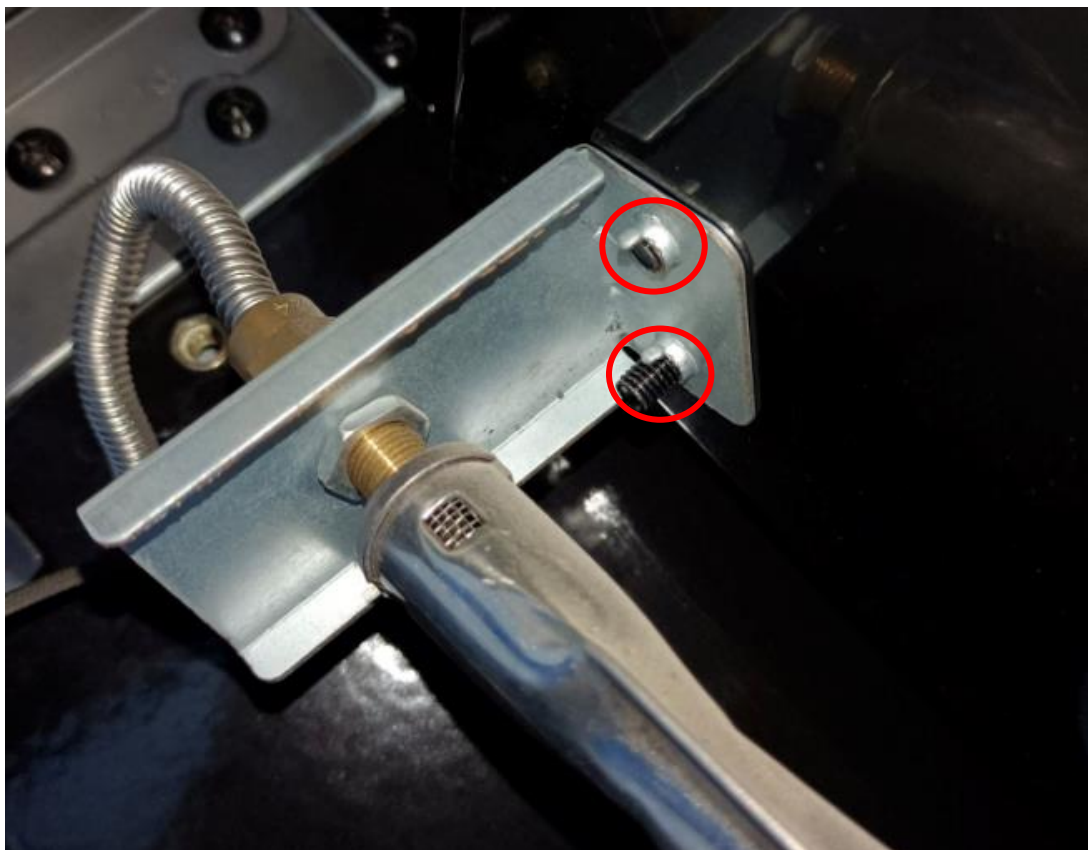
Step 2: Take out the side shelf as the picture shows.



Step 3: Pull out the side burner ignition wire.



Step 4: Take out the bolt from the side burner injector bracket.



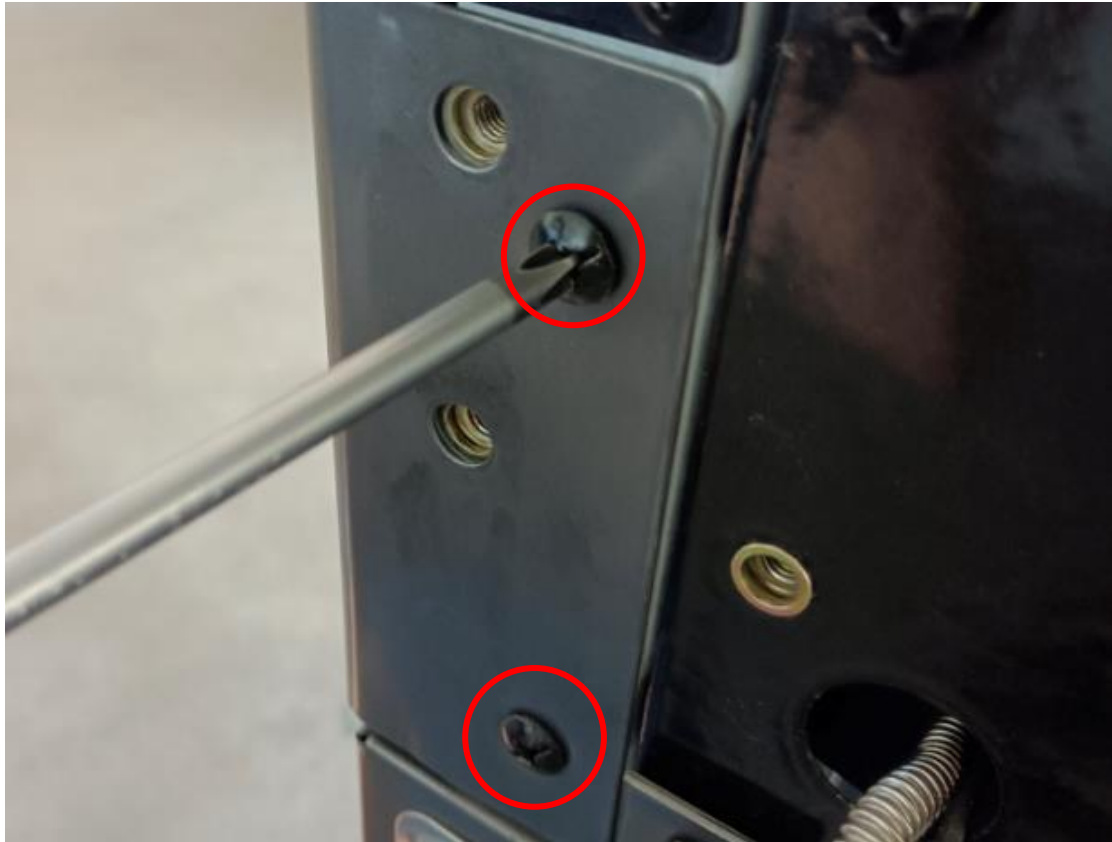
Step 5: Take out the bolts as the picture shows



Step 6: Take out the side burner shelf as the picture shows.



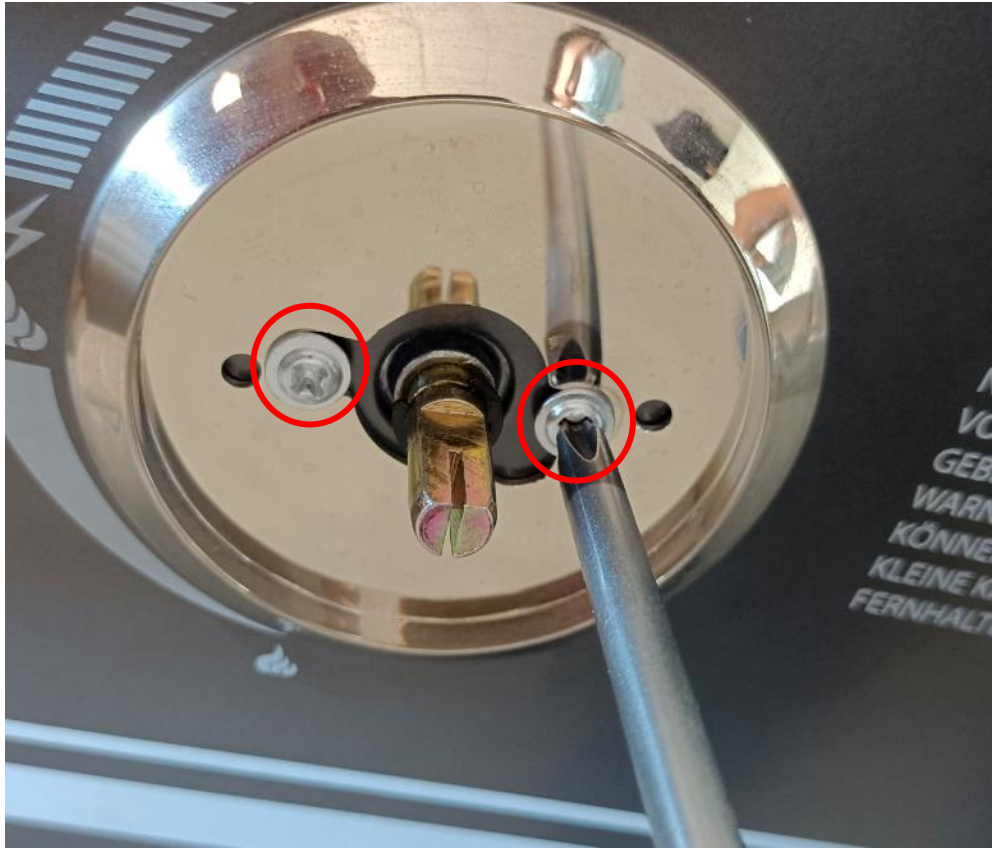
Step 7: Take out the bolts as the picture shows (both sides).



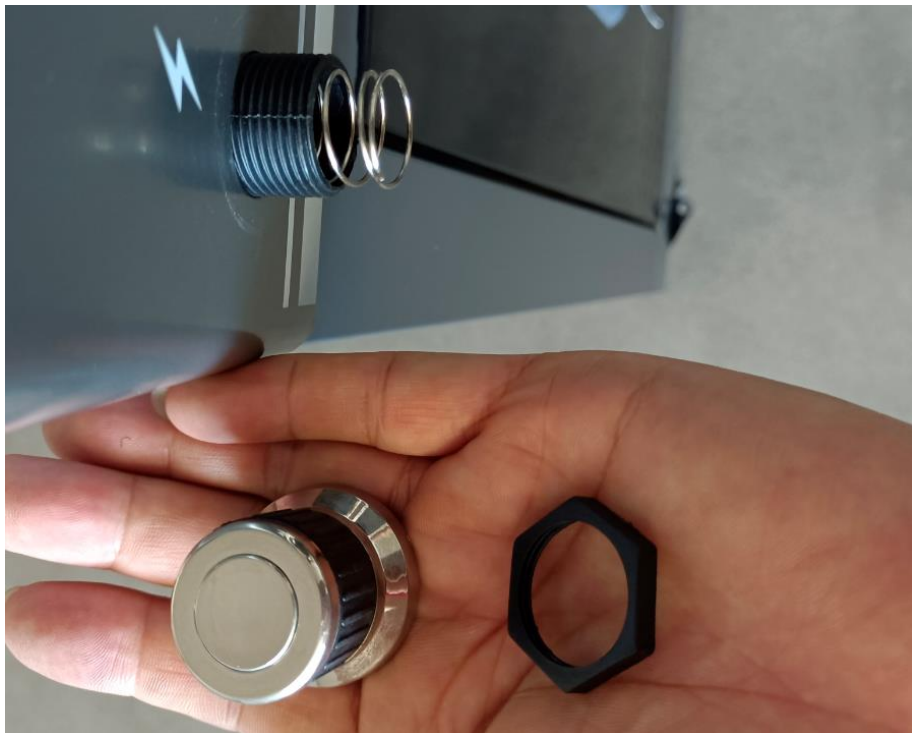
Step 8: Take out all the knobs.



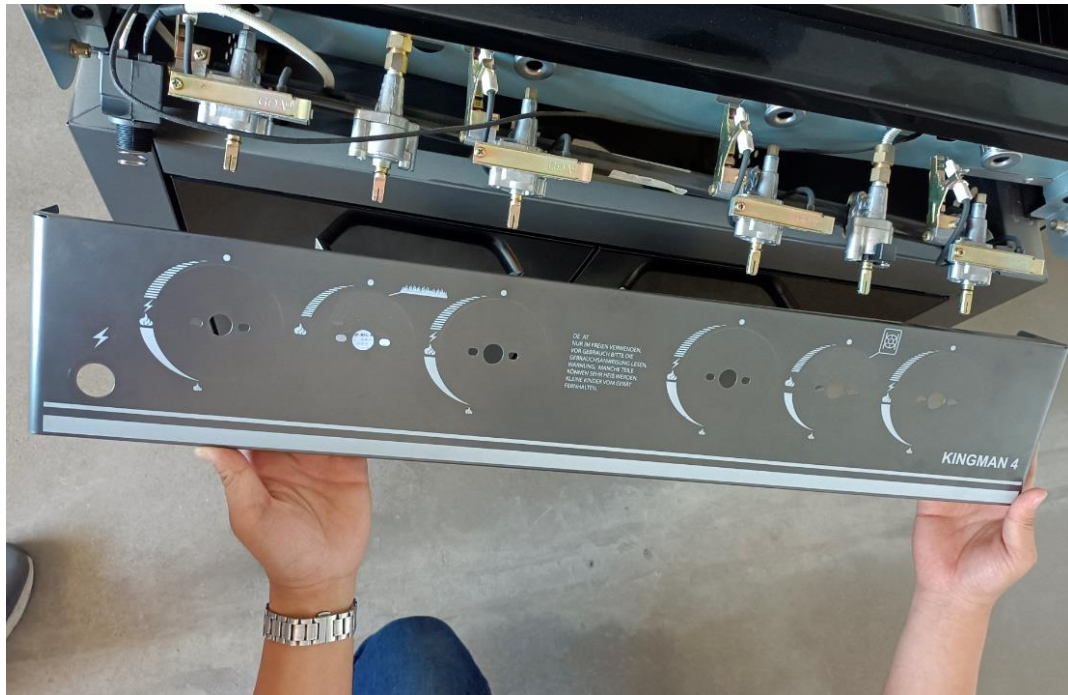
Step 9: Remove all screws from the knob bezel.



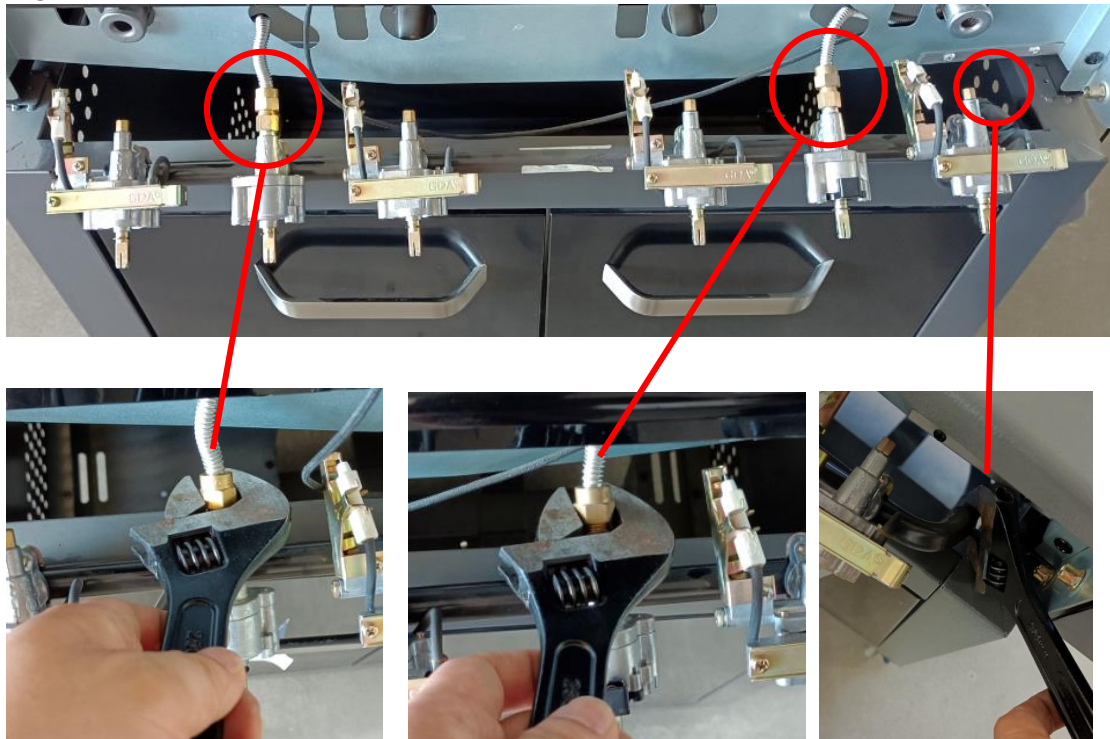
Step 10: Loosen the ignition box.



Step 11: Gently draw the fascia out.



Step 12: Remove the side burner flexible pipe, rear burner flexible pipe and the regulator as shown below.



Step 13:

- A. Replace with a new manifold and conduct a leak test.
- B. Reverse steps above to install the parts back. Please pay attention when installing the fascia, since each injector on the manifold must aim at the burner inlets.

