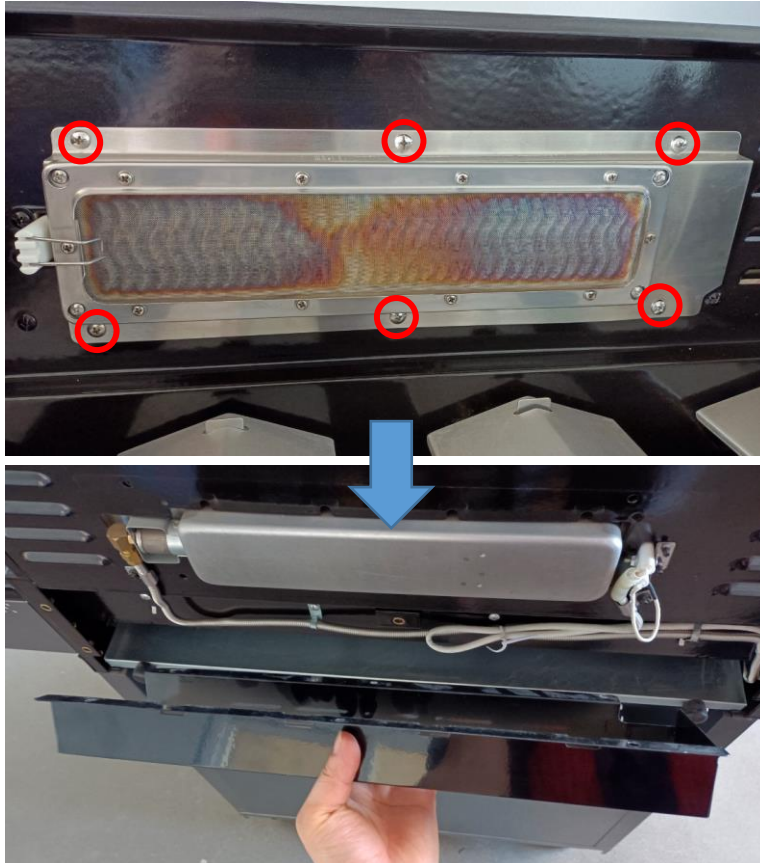


How to replace the rear burner

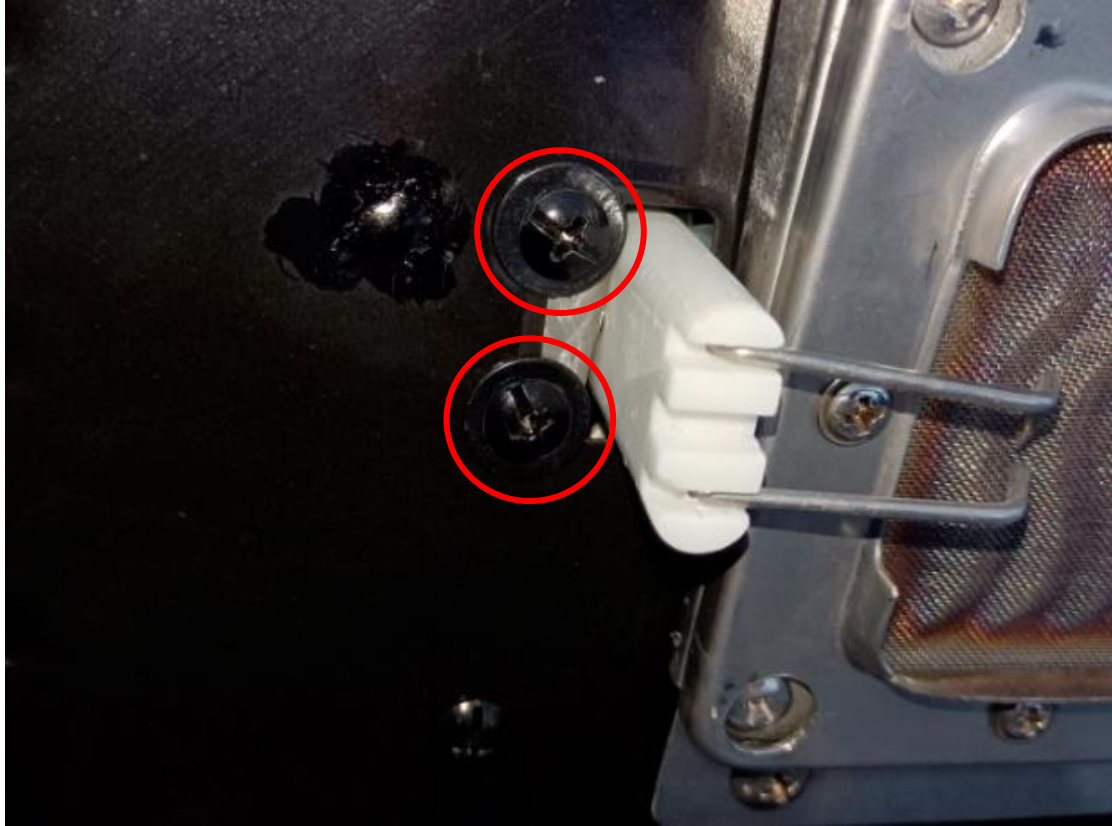
Step 1: Take out the bolts as the picture shows.



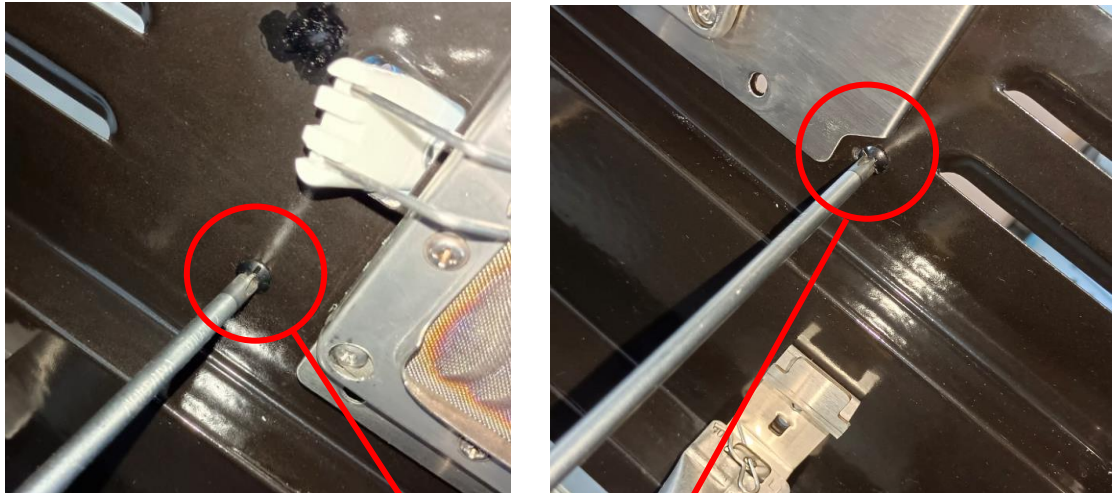
Step 2: Take out the bolts to get the rear burner cover out.



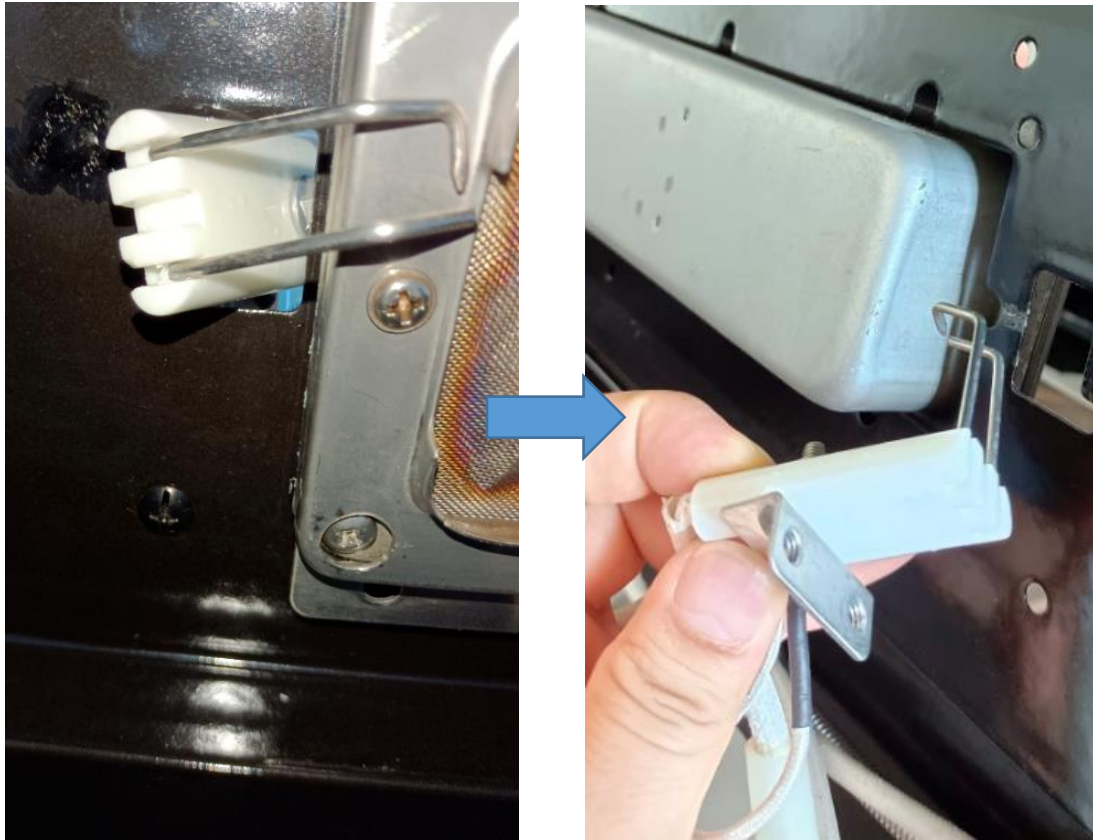
Step 3: Take out the bolts as the picture shows.



Step 4: Take out the bolts as the picture shows.



Step 5: Gently draw the rear burner ignition wire out.

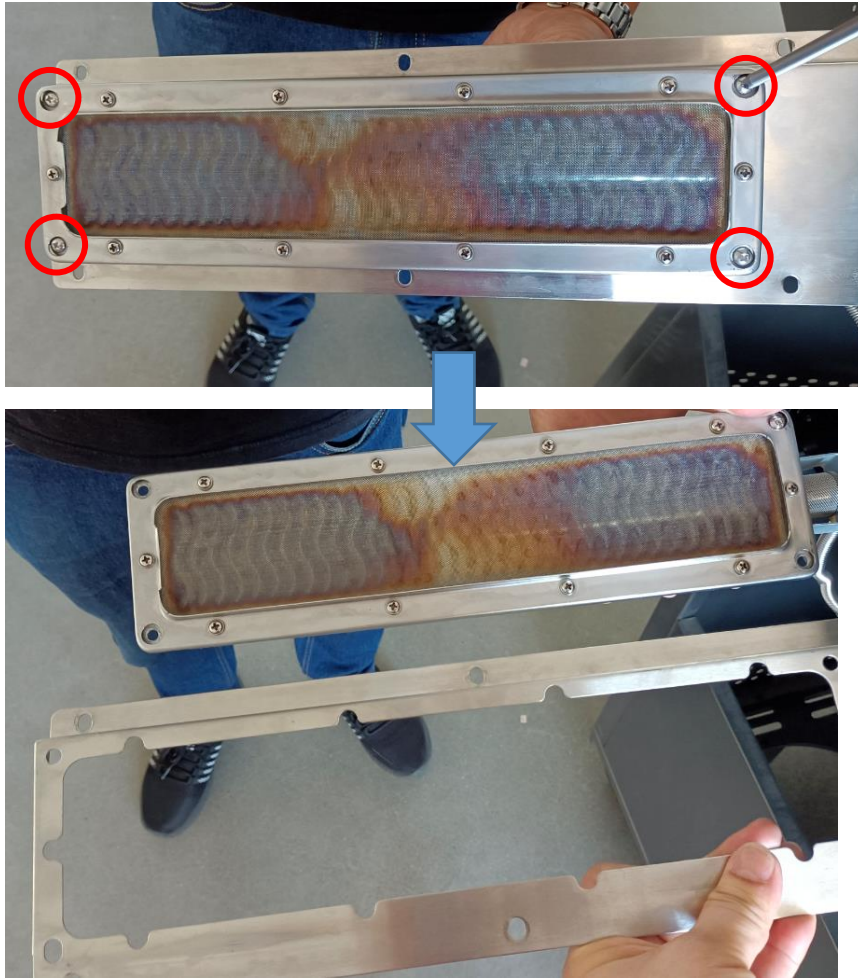


Step 6: Draw the rear burner module out.

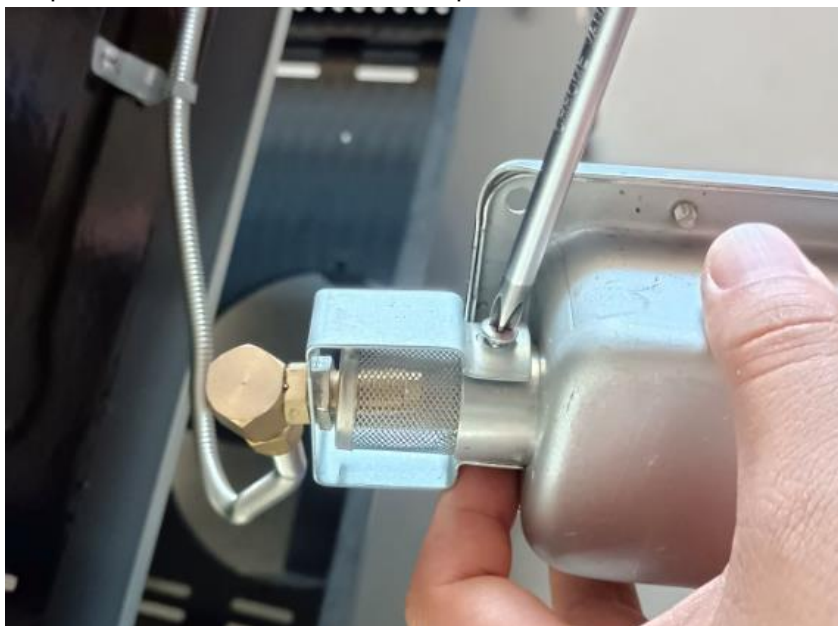




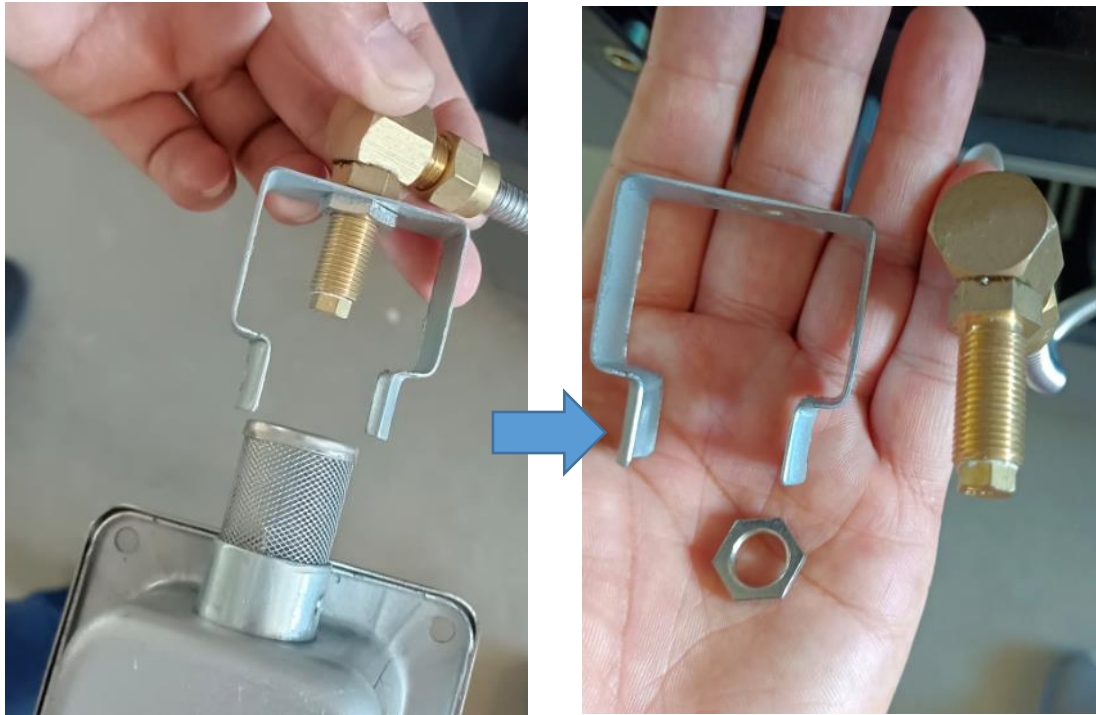
Step 7: Take out the bolts to release the rear burner holder.



Step 8: Take out the bolts as the picture shows.



Step 9: Take out the rear burner injector holder.



Step 10: Replace with a new rear burner. Reverse steps above to install the parts back.