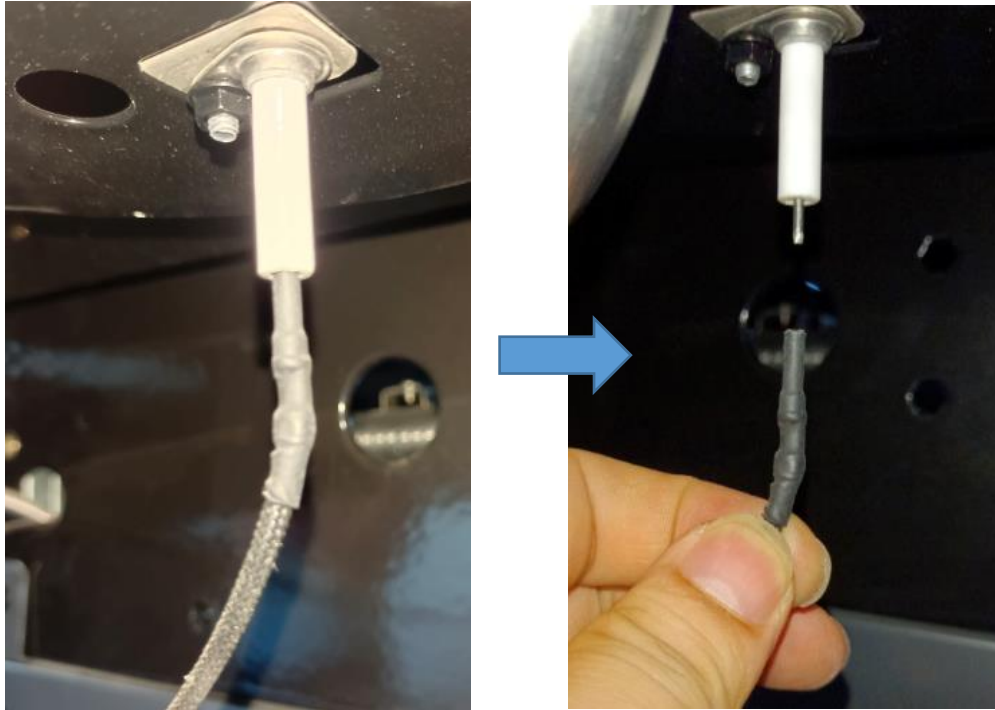
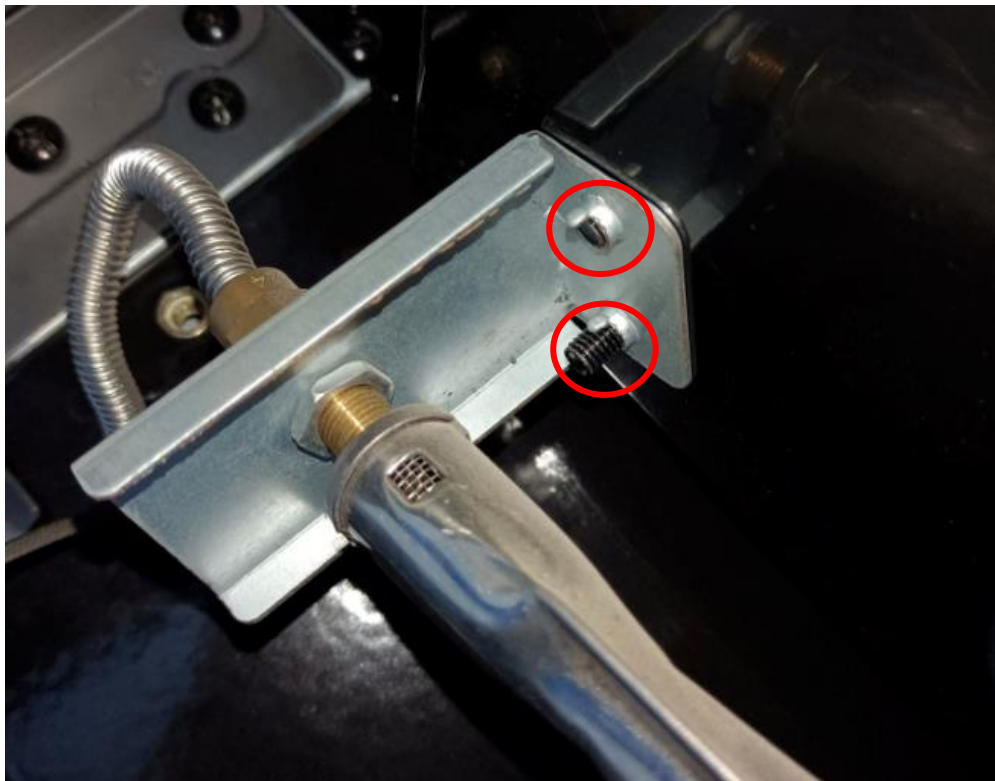


How to replace the side burner

Step 1: Pull out the side burner ignition wire.

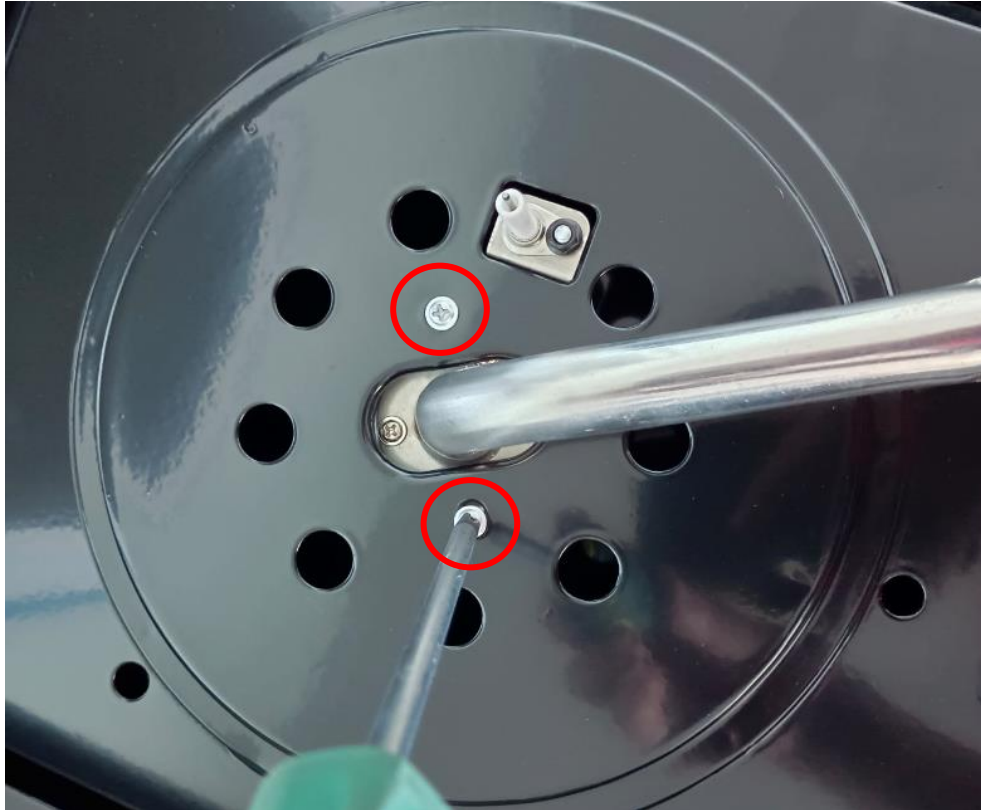


Step 2: Take out the bolt from the side burner injector bracket.





Step 3: Take out the bolts as the picture shows.



Step 4: Gently draw the side burner out.



Step 5: Take out the bolts as the picture shows.



Step 6: Replace with a new side burner.



Step 7: Reverse steps above to install the parts back.