

Garth Code : BUN-823-000
 Customer Item ID : 0700863
 APN : 9333417025573
 BBQ Name on Carton : Calora Ochre
 BBQ Name on Hood : N/A

Component Breakdown

Code	Box Length	Box Width	Box Height	Net Weight	Gross Weight
BUN-823-000	770 mm	250 mm	600 mm	12 kg	13.5 kg

Assembled Dimensions

Overall Length	Overall Width	Overall Height	Overall Weight
760 mm	760 mm	2200 mm	12 kg

Miscellaneous Information

Cooking Area : N/A
 Total Heat Input : 28 MJ/H
 Supply Pressure : 2.75 kpa
 Gas Type : ULPG
 BBQ cover : NO

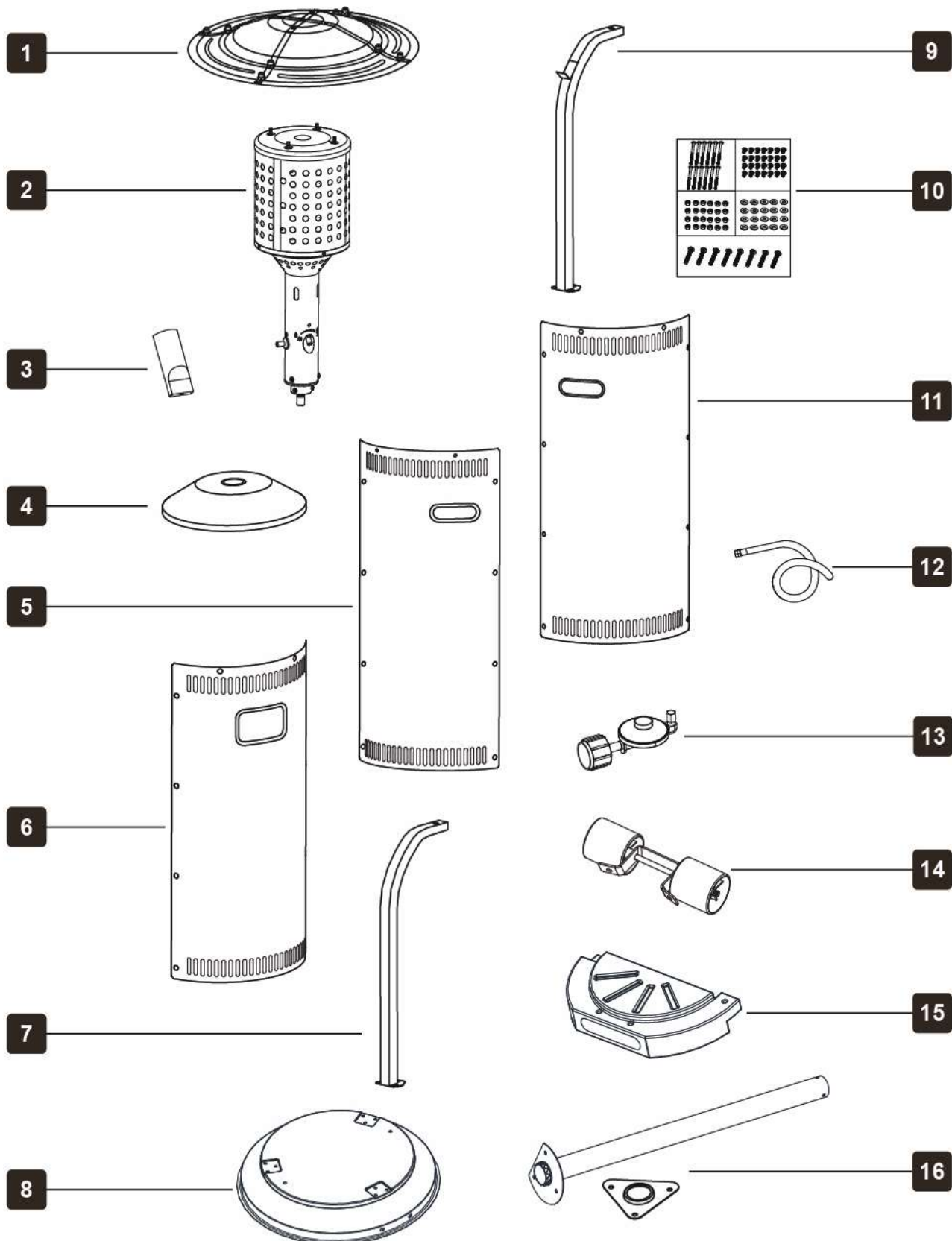


LISTED ON GARTHSUPPORT: YES

Position of Data Plate :
Around the knob

Features

ECO GREEN stainless steel burner
 50% lower CO2 emissions* 50% lower costs* **than conventional 12 kW standard burners
 4-6 kW infinitely variable output
 Slimline stainless steel slip case



PART NUMBER	PART NAME	SUPPLIER CODE	
1	Reflector FAL	140003077	
2	Burner	140003078	
3	Knob	140002014	
4	Container lid (ochre)	140003080	
5	Container part left with hinge (ochre)	140003081	
6	Container door (ochre)	140003084	
7	Tube Holder	140003082	
8	Base (black)	140003083	
9	Tube Holder with small angle	140003085	
10	Screw set	140003095	
11	Container part right (ochre)	140003087	
12	Regulator hose	RC013027-B-1	
13	Regulator	AU	RC013027-B-2
		NZ	RC005006-B-2
14	Wheel set	140003088	
15	Bottom weight with cover	140003089	
16	Tube with support plate	140003079	